



AGENDA

Tree Advisory Commission Meeting

4:00 PM - Thursday, May 7, 2026

City Hall Council Chambers

	Page
1. CALL TO ORDER	
2. ROLL CALL	
2.1. Chairperson welcomes all, including guests. Commissioners & Advisors introduce themselves.	
3. APPROVAL OF AGENDA	
3.1. Motion by _____ Second by _____ to approve, or amend and approve, this May 7, 2026 agenda.	
4. APPROVAL OF MINUTES	
4.1. Motion by _____ Second by _____ to approve, or amend and approve, the March 5, 2026 meeting minutes. 03_05_2026 TAC Meeting Minutes	3 - 4
5. OLD BUSINESS	
5.1. City Reimbursement Programs & Budget Update - J. Stadheim Engineering Dept. 2026 TAC Tree Reimbursement Program - 29 April 2026	5
5.2. Park and Recreation Department Update - J. Schugel	
1. Tree City USA (2025) - https://vimeo.com/1120861531/a1e488d16b?share=copy	
2. Arbor Day (2026)	
3. Ash Tree Treatments in Parks	
5.3. Public Works Update - J. Hoffmann	
5.4. Private Tree Services Update - T. Guggisberg	
5.5. Emerald Ash Borer (EAB) Update - Joe Stadheim, Engineer	
5.6. Utility Billing Information Inserts	
5.7. Big Tree Contest	
5.8. Home Show Recap	
6. NEW BUSINESS	
6.1. DNR 202 Community Tree Report (Veit) rapid-tree-assessment-2020-report-new-ulm	6 - 18
6.2. 2027 TAC Budget Request	

to recommend the 2027 Tree Advisory Commission Budget request as

follows:

\$10,000.00	Diseased and Boulevard Tree Programs
\$1,000.00	Contractual Services
\$350.00	Home Show
\$1,400.00	Printing and Pamphlets
\$800.00	Tree Pest Reduction Efforts
\$13,550.00	TOTAL

Motion by _____, seconded by _____

7. DATE OF NEXT MEETING

7.1. July 2, 2026 - First Thursday of odd numbered months. 4:00 pm, City Hall Council Chambers.

Please email agenda items to the Park and Recreation Department Administrative Assistant, Donitta Trebesch no later than one week prior to meetings. donittat@newulmmn.gov

8. ADJOURNMENT

8.1. With there being no further business, Chairperson declares the meeting adjourned.

**New Ulm Tree Advisory Commission Meeting Minutes
March 5, 2026**

1. Commission meeting was called to order at 4:00 p.m. by Commission Chair Veit.
2. Roll Call Attendance
 - 2.1

Jordy Veit	Chair	Present
Lee Knauf	Vice Chair	Present
Miriam Hoffmann	Commissioner	Present
Tony Guggisberg	Advisor	Absent
Jeff Hoffman	Public Works Superintendent - Advisor	Absent
Joey Schugel	Director, Park and Recreation - Advisor	Present
Joe Stadheim	City Engineer – Advisor	Present

3. Approval of Agenda
 - 3.1 Motion was made by Knauf seconded by M. Hoffmann to approve the March 5, 2026 meeting agenda. Motion carried.
4. Approval of Minutes
 - 4.1 Motion was made by Knauf seconded by M. Hoffmann to approve the November 6, 2025 meeting minutes. Motion carried.
5. Old Business:
 - 5.1 2026 City Reimbursement Programs and Budget Update

2026 Budget	
Boulevard Tree Planting Program Reimbursements	\$10,000.00
Diseased Tree Program Reimbursements*	\$76,000.00
Contractual Services Expenses	\$1,000.00
Tree Pest Policy and Education Expenses	\$800.00
Printing Pamphlet Expenses	\$1,400.00
Home Show	\$350.00

TOTAL \$89,550.00

* 2025 Budget Carry-Over, Earmarked for Diseased Tree Reimbursements.

- 5.2 Park and Recreation Department Update
 - Ash Inventory - 30 Ash Trees remain in city parks. Over the next 2 years, the goal is to have all diseased trees removed and continue to treat those that treatable. Staff has trimmed over the winter and will continue as weather allows.
 - City Council is discussing the overall reduction of commissions. The Mayor is studying the issue and has asked for recommendations. The discussions are ongoing and no decision has been made as of yet.
- 5.3 Public Works Update – Hoffmann
 - Crews continue to stump removal and tree trimming.
- 5.4 Private Tree Services Update – No update.

5.5 EAB Update. – There are 273 boulevard ash trees and approximately 50 ash trees on city property remaining. The City of New Ulm was not awarded funding through the DNR ReLeaf Grant.

5.6 Utility Billing Information Inserts – Motion under item 6.2 (Big Tree Contest).

6. New Business:

6.1 Home Show 2026

Scheduled for March 27 – March 28, 2026.

Motion was made by Knauf, seconded by M. Hoffmann to participate in the Home Show in March, 2026.

Motion carried.

6.2 Big Tree Contest

A motion was made by Hoffmann and seconded by Knauf to select Hackberry as the featured species for the 2026 Big Tree Contest. The motion carried.

The Big Tree Contest and the Diseased Tree Removal Program will be included as the April 2026 utility billing insert.

6.3 Tree Walk Program

Director Schugel will reach out to the League of Minnesota Women Voters to determine their interest in leading the program again this year.

6.4 Commissioner Reports – No reports.

7. Next Meeting

7-1 Next meeting Thursday, May 7, 2026 at 4:00 pm, City Council Chambers.

Please email agenda items to the New Ulm Park and Recreation Administrative Assistant, Donitta Trebesch no later than one week prior to meetings: donittat@newulmmn.gov.

8. Adjourned - Respectfully submitted, Donitta Trebesch, Park and Recreation Administrative Assistant.

2026 Tree Advisory Commission Reimbursement Program

	Budgeted Amounts	Jan. 1st - July 1st Expenses	Unused Amounts	July 1st - Dec. 31st Expenses
Boulevard Tree Planting Program Reimbursements	\$10,000.00	\$0.00	\$10,000.00	
Diseased Tree Program Reimbursements	\$76,000.00	\$2,325.07	\$73,674.93	\$2,766.89
Contractual Services Expenses	\$1,000.00	\$0.00	\$1,000.00	
Tree Pest Policy and Education Expenses	\$800.00	\$0.00	\$800.00	
Printing and Pamphlet Expenses	\$1,400.00	\$0.00	\$1,400.00	
Home Show	\$350.00	\$350.00	\$0.00	
Sub TOTAL	\$89,550.00			
2025 Budget carry-Over Amount	\$76,000.00	Carry-Over went into Diseased Tree Reimbursements		
TOTALS	\$89,550.00	\$2,675.07	\$86,874.93	

Trees Planted Qty:	3
Trees Removed Qty:	37

273 boulevard Ash trees left as of 2-9-2026

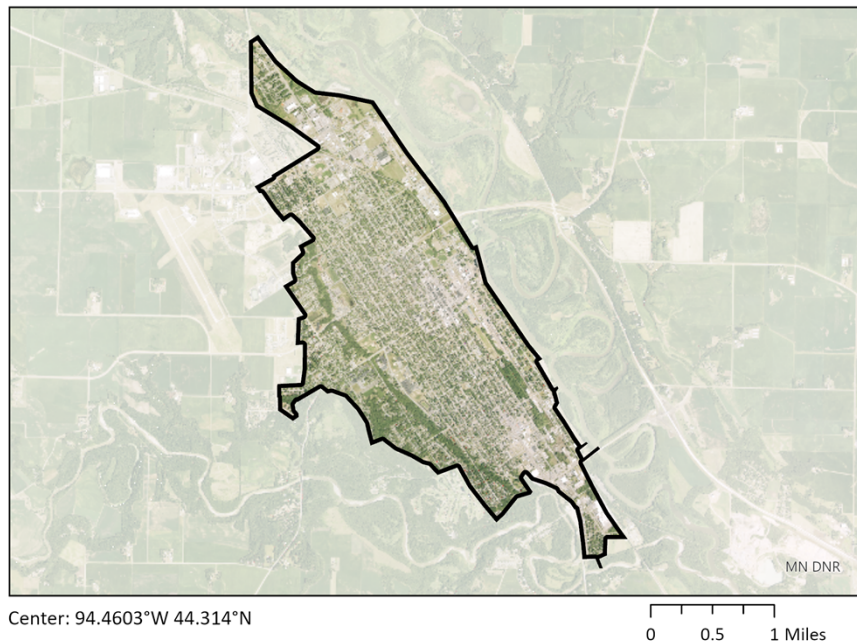
Account Number: 101-1000-355203

April 30, 2026

DNR 2020 Community Tree Report for the City of New Ulm, Brown County

Survey Overview

New Ulm Survey Boundary



New Ulm 2020 survey boundary with 2023 aerial imagery background.

Results Summary

The city of New Ulm spans 6,634 acres with 3,220 of those acres within the business & residential area outlined above. We estimate that there are about **52,000 trees** within 66 feet of the roads in the business & residential area. The 2020 survey estimated a population **change of -11% trees** in New Ulm compared to the 2010 estimation.

Out of the 3,220 surveyed acres, 98% (3,149 acres) is considered maintained while 2% (71 acres) is considered non-maintained. Only maintained areas are surveyed. Maintained areas are periodically mowed or fall within an artificial surface, (e.g. parking lot).

Refer to **Appendix A** for more information on the 2020 data collection methods.

Funding for this project was provided by the Minnesota Environment and Natural Resources Trust Fund as recommended by the Legislative-Citizen Commission on Minnesota Resources (LCCMR).

2020 Summary

Refer to Appendix B for a guide to all survey summary tables.

Species Diversity

Table 1. Species Diversity in the 2020 Survey.

Genus	Species	Population	% of All Trees	% Dead
Acer	Total	16,200	31%	<1%
	Norway Maple	5,300	10%	0%
	Silver Maple	4,700	9%	0%
	Sugar Maple	2,400	5%	0%
	Maple, Other	1,300	3%	4%
	Red Maple	1,300	2%	4%
	Freeman Maple	800	1%	0%
	Amur Maple	400	<1%	0%
Fraxinus	Total	7,000	13%	<1%
	Green Ash	6,100	12%	<1%
	Ash, Other	900	2%	0%
	Black Ash	<100	<1%	0%
Tilia	Total	5,700	11%	<1%
	Basswood	3,800	7%	1%
	Littleleaf Linden	1,900	4%	0%
Picea	Total	4,200	8%	0%
	White Spruce	2,000	4%	0%
	Colorado Blue Spruce	1,700	3%	0%
	Norway Spruce	400	<1%	0%
	Spruce, Other	100	<1%	0%
Gleditsia	Honey Locust	2,300	4%	0%
Malus	Crabapple	2,300	4%	0%
Ulmus	Total	1,900	4%	0%
	American Elm	1,000	2%	0%
	Siberian Elm	700	1%	0%
	Rock Elm	200	<1%	0%
	Elm, Other	<100	<1%	0%
Betula	Total	1,800	3%	0%
	Paper Birch	800	2%	0%
	River Birch	600	1%	0%
	Birch, Other	300	<1%	0%
Celtis	Hackberry	1,600	3%	0%
Quercus	Total	1,600	3%	9%
	Swamp White Oak	800	1%	19%

Genus	Species	Population	% of All Trees	% Dead
	Bur Oak	200	<1%	0%
	Northern Red Oak	200	<1%	0%
	Oak, Other	200	<1%	0%
	White Oak	<100	<1%	0%
	Northern Pin Oak	<100	<1%	0%
Juglans	Black Walnut	1,400	3%	0%
Prunus	Cherry, Other	1,300	2%	0%
Juniperus	Red Cedar	800	2%	0%
Pinus	Total	700	1%	0%
	White Pine	500	<1%	0%
	Red Pine	200	<1%	0%
Thuja	Northern White Cedar	700	1%	0%
Catalpa	Northern Catalpa	500	<1%	0%
Ginkgo	Ginkgo	400	<1%	0%
Morus	Total	300	<1%	0%
	White Mulberry	200	<1%	0%
	Mulberry, Other	<100	<1%	0%
	Red Mulberry	<100	<1%	0%
Aesculus	Total	300	<1%	0%
	Horse Chestnut	200	<1%	0%
	Ohio Buckeye	<100	<1%	0%
Gymnocladus	Kentucky Coffeetree	300	<1%	0%
Syringa	Japanese Tree Lilac	300	<1%	0%
Populus	Cottonwood	200	<1%	0%
Abies	Fir, Other	100	<1%	0%
Boxelder	Boxelder	100	<1%	0%
Other	Other	100	<1%	33%
Carya	Bitternut Hickory	<100	<1%	0%
Cotinus	Smoke Tree	<100	<1%	0%
Crataegus	Hawthorn	<100	<1%	0%
Magnolia	Magnolia, Other	<100	<1%	0%
Ostrya	Ironwood	<100	<1%	0%
Rhus	Sumac, Other	<100	<1%	0%
Salix	Willow, Other	<100	<1%	0%
Sorbus	Mountain-Ash, Other	<100	<1%	0%

Size Class Distribution

Table 2. Size Class Distribution by Species in the 2020 Survey.

Genus	Species	Population	% Small Trees	% Medium Trees	% Large Trees	% Super Trees
Acer	Total	16,200	7%	19%	45%	30%

Genus	Species	Population	% Small Trees	% Medium Trees	% Large Trees	% Super Trees
	Norway Maple	5,300	4%	21%	62%	14%
	Silver Maple	4,700	6%	6%	26%	62%
	Sugar Maple	2,400	14%	20%	53%	14%
	Maple, Other	1,300	7%	25%	29%	39%
	Red Maple	1,300	7%	26%	56%	11%
	Freeman Maple	800	12%	50%	31%	6%
	Amur Maple	400	12%	38%	38%	12%
Fraxinus	Total	7,000	2%	11%	57%	30%
	Green Ash	6,100	0%	12%	57%	30%
	Ash, Other	900	17%	0%	61%	22%
	Black Ash	50	0%	0%	50%	50%
Tilia	Total	5,700	7%	21%	64%	9%
	Basswood	3,800	8%	19%	60%	14%
	Littleleaf Linden	1,900	5%	24%	71%	0%
Picea	Total	4,200	9%	33%	46%	12%
	White Spruce	2,000	10%	40%	40%	10%
	Colorado Blue Spruce	1,700	11%	23%	46%	20%
	Norway Spruce	400	0%	44%	56%	0%
	Spruce, Other	100	0%	0%	100%	0%
Gleditsia	Honey Locust	2,300	20%	6%	51%	22%
Malus	Crabapple	2,300	15%	56%	25%	4%
Ulmus	Total	1,900	20%	20%	34%	27%
	American Elm	1,000	36%	18%	27%	18%
	Siberian Elm	700	0%	14%	36%	50%
	Rock Elm	200	0%	25%	75%	0%
	Elm, Other	50	0%	100%	0%	0%
Betula	Total	1,800	16%	51%	27%	5%
	Paper Birch	800	6%	47%	41%	6%
	River Birch	600	23%	46%	23%	8%
	Birch, Other	300	29%	71%	0%	0%
Celtis	Hackberry	1,600	24%	9%	36%	30%
Quercus	Total	1,600	39%	21%	18%	21%
	Swamp White Oak	800	50%	25%	25%	0%
	Bur Oak	200	40%	0%	0%	60%
	Northern Red Oak	200	20%	20%	40%	20%
	Oak, Other	200	25%	0%	0%	75%
	White Oak	50	50%	50%	0%	0%
	Northern Pin Oak	50	0%	100%	0%	0%
Juglans	Black Walnut	1,400	7%	3%	76%	14%
Prunus	Cherry, Other	1,300	30%	63%	7%	0%
Juniperus	Red Cedar	800	35%	35%	18%	12%

Genus	Species	Population	% Small Trees	% Medium Trees	% Large Trees	% Super Trees
Pinus	Total	700	0%	27%	53%	20%
	White Pine	500	0%	10%	60%	30%
	Red Pine	200	0%	60%	40%	0%
Thuja	Northern White Cedar	700	50%	50%	0%	0%
Catalpa	Northern Catalpa	500	0%	0%	10%	90%
Ginkgo	Ginkgo	400	75%	25%	0%	0%
Morus	Total	300	0%	86%	14%	0%
	White Mulberry	200	0%	100%	0%	0%
	Mulberry, Other	50	0%	0%	100%	0%
	Red Mulberry	50	0%	100%	0%	0%
Aesculus	Total	300	33%	50%	17%	0%
	Horse Chestnut	200	40%	40%	20%	0%
	Ohio Buckeye	50	0%	100%	0%	0%
Gymnocladus	Kentucky Coffeetree	300	83%	17%	0%	0%
Syringa	Japanese Tree Lilac	300	17%	83%	0%	0%
Populus	Cottonwood	200	0%	0%	25%	75%
Abies	Fir, Other	100	100%	0%	0%	0%
Boxelder	Boxelder	100	33%	33%	0%	33%
Other	Other	100	100%	0%	0%	0%
Carya	Bitternut Hickory	50	0%	0%	100%	0%
Cotinus	Smoke Tree	50	100%	0%	0%	0%
Crataegus	Hawthorn	50	100%	0%	0%	0%
Magnolia	Magnolia, Other	50	0%	100%	0%	0%
Ostrya	Ironwood	50	100%	0%	0%	0%
Rhus	Sumac, Other	50	100%	0%	0%	0%
Salix	Willow, Other	50	100%	0%	0%	0%
Sorbus	Mountain-Ash, Other	50	100%	0%	0%	0%

Tree Condition

Table 3. Tree Condition by Species and Size Class in the 2020 Survey.

Genus	Species	Population	Small % No Decline Noted	Medium % No Decline Noted	Large % No Decline Noted	Super % No Decline Noted
Acer	Total	16,200	96%	94%	97%	95%
	Norway Maple	5,300	100%	96%	97%	94%
	Silver Maple	4,700	100%	100%	96%	98%
	Sugar Maple	2,400	100%	100%	100%	100%
	Maple, Other	1,300	50%	100%	100%	82%
	Red Maple	1,300	100%	71%	93%	67%
	Freeman Maple	800	100%	100%	100%	100%
	Amur Maple	400	100%	67%	67%	100%

Genus	Species	Population	Small % No Decline Noted	Medium % No Decline Noted	Large % No Decline Noted	Super % No Decline Noted
Fraxinus	Total	7,000	100%	56%	53%	34%
	Green Ash	6,100	-	56%	51%	31%
	Ash, Other	900	100%	-	64%	50%
	Black Ash	50	-	-	100%	100%
Tilia	Total	5,700	100%	100%	95%	100%
	Basswood	3,800	100%	100%	96%	100%
	Littleleaf Linden	1,900	100%	100%	93%	-
Picea	Total	4,200	100%	90%	95%	91%
	White Spruce	2,000	100%	82%	100%	100%
	Colorado Blue Spruce	1,700	100%	100%	100%	86%
	Norway Spruce	400	-	100%	80%	-
	Spruce, Other	100	-	-	67%	-
Gleditsia	Honey Locust	2,300	80%	100%	92%	91%
Malus	Crabapple	2,300	100%	100%	92%	100%
Ulmus	Total	1,900	100%	75%	100%	100%
	American Elm	1,000	100%	100%	100%	100%
	Siberian Elm	700	-	50%	100%	100%
	Rock Elm	200	-	0%	100%	-
	Elm, Other	50	-	100%	-	-
Betula	Total	1,800	100%	100%	100%	100%
	Paper Birch	800	100%	100%	100%	100%
	River Birch	600	100%	100%	100%	100%
	Birch, Other	300	100%	100%	-	-
Celtis	Hackberry	1,600	100%	100%	100%	100%
Quercus	Total	1,600	62%	100%	100%	100%
	Swamp White Oak	800	62%	100%	100%	-
	Bur Oak	200	0%	-	-	100%
	Northern Red Oak	200	100%	100%	100%	100%
	Oak, Other	200	100%	-	-	100%
	White Oak	50	100%	100%	-	-
Juglans	Black Walnut	1,400	100%	100%	100%	100%
	Cherry, Other	1,300	100%	100%	100%	-
Juniperus	Red Cedar	800	83%	100%	100%	100%
Pinus	Total	700	-	100%	88%	100%
	White Pine	500	-	100%	100%	100%
	Red Pine	200	-	100%	50%	-

Genus	Species	Population	Small % No Decline Noted	Medium % No Decline Noted	Large % No Decline Noted	Super % No Decline Noted
Thuja	Northern White Cedar	700	100%	100%	-	-
Catalpa	Northern Catalpa	500	-	-	100%	100%
Ginkgo	Ginkgo	400	100%	100%	-	-
Morus	Total	300	-	100%	100%	-
	White Mulberry	200	-	100%	-	-
	Mulberry, Other	50	-	-	100%	-
	Red Mulberry	50	-	100%	-	-
Aesculus	Total	300	100%	100%	100%	-
	Horse Chestnut	200	100%	100%	100%	-
	Ohio Buckeye	50	-	100%	-	-
Gymnocladus	Kentucky Coffeetree	300	80%	100%	-	-
Syringa	Japanese Tree Lilac	300	100%	100%	-	-
Populus	Cottonwood	200	-	-	100%	100%
Abies	Fir, Other	100	100%	-	-	-
Boxelder	Boxelder	100	100%	100%	-	100%
Other	Other	100	67%	-	-	-
Carya	Bitternut Hickory	50	-	-	100%	-
Cotinus	Smoke Tree	50	100%	-	-	-
Crataegus	Hawthorn	50	100%	-	-	-
Magnolia	Magnolia, Other	50	-	100%	-	-
Ostrya	Ironwood	50	100%	-	-	-
Rhus	Sumac, Other	50	100%	-	-	-
Salix	Willow, Other	50	100%	-	-	-
Sorbus	Mountain-Ash, Other	50	0%	-	-	-

Change from 2010 to 2020

Refer to Appendix D for a guide to all tables comparing the 2010 and 2020 surveys.

Tree Population and Health Change

Table 4. Tree population and health changes between 2010 and 2020 surveys.

* Indicates genus was only found/recorded in either the 2010 or 2020 survey.

Genus	Population Change	Population % Change	Change in % No Decline Noted
-------	-------------------	---------------------	------------------------------

Genus	Population Change	Population % Change	Change in % No Decline Noted
Ulmus (Elm)	+1,700	+850%	+15%
Juniperus (Red Cedar)*	+800	-	-
Prunus (Cherry)	+700	+117%	+15%
Quercus (Oak)	+500	+45%	+7%
Gleditsia (Honey Locust)	+400	+21%	+12%
Tilia (Basswood)	+400	+8%	+2%
Ginkgo	+300	+300%	0%
Thuja (White Cedar)	+300	+75%	0%
Celtis (Hackberry)	+300	+23%	+11%
Betula (Birch)	+300	+20%	+10%
Gymnocladus (Kentucky Coffeetree)*	+300	-	-
Syringa (Japanese Lilac)	+100	+50%	+25%
Abies (Fir)*	+100	-	-
Other	+<100	+100%	+67%
Carya (Hickory)*	+<100	-	-
Cotinus (Smoke Tree)*	+<100	-	-
Crataegus (Hawthorn)*	+<100	-	-
Magnolia*	+<100	-	-
Ostrya (Ironwood)*	+<100	-	-
Rhus (Sumac)*	+<100	-	-
Aesculus (Buckeye)	0	0%	0%
Catalpa	0	0%	+55%
Salix (Willow)	-<100	-50%	+67%
Carpinus (Musclewood)*	-<100	-	-
Morus (Mulberry)	-100	-25%	0%
Boxelder	-100	-50%	+50%
Sorbus (Mountain ash)	-150	-75%	-100%
Malus (Apple)	-500	-18%	-<1%
Juglans (Black Walnut)	-500	-26%	+15%
Pinus (Pine)	-700	-50%	-3%
Acer (Maple)	-1,200	-7%	+7%
Picea (Spruce)	-1,600	-28%	-7%
Populus (Poplar)	-2,400	-92%	+15%
Fraxinus (Ash)	-5,800	-45%	-41%

Size Distribution Change

Table 5. Tree size distribution change between 2010 and 2020 surveys.

* Indicates genus was only found/recorded in either the 2010 or 2020 survey.

Genus	Population Change	Change in % Small Trees	Change in % Medium Trees	Change in % Large Trees	Change in % Super Trees
Ulmus (Elm)	+1,700	+20%	+20%	-26%	-13%
Juniperus (Red Cedar)*	+800	-	-	-	-
Prunus (Cherry)	+700	-40%	+32%	+7%	0%
Quercus (Oak)	+500	-8%	+4%	+<1%	+4%
Gleditsia (Honey Locust)	+400	+8%	-28%	+5%	+15%
Tilia (Basswood)	+400	-23%	-23%	+40%	+6%
Ginkgo	+300	-25%	+25%	0%	0%
Thuja (White Cedar)	+300	+50%	+6%	-56%	0%
Celtis (Hackberry)	+300	+17%	-5%	-24%	+12%
Betula (Birch)	+300	-39%	+22%	+14%	+2%
Gymnocladus (Kentucky Coffeetree)*	+300	-	-	-	-
Syringa (Japanese Lilac)	+100	-58%	+58%	0%	0%
Abies (Fir)*	+100	-	-	-	-
Other	+<100	+100%	-100%	0%	0%
Carya (Hickory)*	+<100	-	-	-	-
Cotinus (Smoke Tree)*	+<100	-	-	-	-
Crataegus (Hawthorn)*	+<100	-	-	-	-
Magnolia*	+<100	-	-	-	-
Ostrya (Ironwood)*	+<100	-	-	-	-
Rhus (Sumac)*	+<100	-	-	-	-
Aesculus (Buckeye)	0	+17%	-17%	-<1%	0%
Catalpa	0	0%	0%	-54%	+54%
Salix (Willow)	-<100	+67%	-33%	-33%	0%
Carpinus (Musclewood)*	-<100	-	-	-	-
Morus (Mulberry)	-100	-75%	+61%	+14%	0%
Boxelder	-100	+33%	+33%	-75%	+8%
Sorbus (Mountain ash)	-150	0%	0%	0%	0%
Malus (Apple)	-500	-62%	+33%	+25%	+4%
Juglans (Black Walnut)	-500	-10%	-23%	+22%	+11%
Pinus (Pine)	-700	-23%	-3%	+10%	+17%
Acer (Maple)	-1,200	-7%	-23%	+11%	+19%
Picea (Spruce)	-1,600	-9%	-22%	+18%	+12%
Populus (Poplar)	-2,400	-44%	-15%	-8%	+68%
Fraxinus (Ash)	-5,800	-8%	-27%	+10%	+25%

Appendices

Appendix A: 2020 Data Collection

Disclaimer: This survey was designed to be a **Rapid Assessment** of tree communities in major towns and cities across Minnesota to create a high-level summary of tree population health, size, and species diversity. For a more in-depth summary for your community, conducting an independent tree inventory survey is recommended.

Who: The data was collected by AmeriCorps members and college forestry interns with basic tree identification skills.

Where: Interns collected data along transects following public roads in 305 of Minnesota's most populated cities and towns. The number, length, and placement of transects were chosen to obtain a representative sample of trees within each community. Trees within 66' of either side of the road were recorded in the survey.

When: Data was collected in April through November of 2022, 2023, and 2024.

What: Only trees with at least a 1 inch diameter at breast height (4.5 feet) were recorded in the survey. Trees with multiple stems were counted as a single individual, measured by the largest stem.

Appendix B: Survey Summary Table Columns and Symbology

Genus: The taxonomic group above species. We use genus to group together and summarize across similar species.

Species: All tree species observed, grouped by genus. Data is reported for the individual species as well as the summarized "Total" by genus. "Total" summaries are not included for a genus with only one species observed.

Population: The number of trees estimated to be within survey boundaries for a given species or genus total. The populations of all tree species within a genus will add up to approximately that genus' total population.

% of All Trees: The number of trees for a given species or genus compared to the total number of trees estimated in a community, expressed as a percent ($\frac{\# \text{ Trees in Species or Genus}}{\# \text{ All Trees}} * 100 = \% \text{ of All Trees}$). The % of All Trees for species within a genus will add up to approximately the % of All Trees for that genus' total.

Genus/Species % [Size Class]: This represents the percentage of trees that fall within a given size class for the given species or genus total. The four size class distribution percentages add up to approximately 100% within a species or genus total.

[Size Class] % No Decline Noted: This describes the percent of alive trees for a given species/genus and size class that were not marked as having signs of decline in the survey. Dead trees were excluded from this calculation.

Size Class: A tree's size class is determined by the estimated DBH (diameter at breast height). The four size classes are:

- Small: Less than 5 inches (DBH < 5").
- Medium: Between 5 and 10 inches (5" <= DBH < 10").
- Large: Between 10 and 24 inches (10" <= DBH < 24").
- Super: Greater than 24 inches (DBH >= 24").

Dash "-": A dash was used in % No Decline Noted when there were no trees observed in that species or genus' size class.

% Dead: This is the percent of all trees within a given species or genus total that are dead.

***Note:** High percentages of dead or declining trees may misrepresent the overall health of species with low populations. This may occur when a species is rare in a community and the few trees recorded in the survey were all or mostly dead or declining.

Appendix C: 2010 to 2020 Change Table Columns and Symbology

Note: Twenty-four communities do not have a community change report because they were not surveyed in 2010.

Population Change: This shows the approximate number of trees gained or lost per genus from 2010 to 2020 (2020 Population – 2010 Population).

Population % Change: This describes how much a genus' population increased or decreased from 2010 to 2020 (2020 Population/2010 Population - 1). A positive percent means the genus' population increased, and a negative percent means the population decreased.

Change in % [Size Class] Trees: This describes how the spread of trees within a size classes has changed from 2010 to 2020 for the given genus (2020 Size Class % - 2010 Size Class %). A negative value means the proportion of trees in that size class has decreased and a positive value means that the proportion of trees in that size class had increased.

Change in % No Decline Noted: This describes whether the proportion of trees without any major decline or defects within a genus has increased or decreased from 2010 to 2020 (2020 Genus % No Decline Noted – 2010 Genus % No Decline Noted). This metric excludes dead trees and only compares alive trees without noted decline to declining alive trees.

Dash "-": A dash in Population % Change, Change in % [Size Class] Trees, and Change in % No Decline Noted is used when a genus was only observed in one survey cycle (2010 or 2020). These columns are excluded because there is not a second value to compare to. Population

Change is still included with the assumption that the genus' population from the missing cycle was 0.

Appendix D: 2010 Survey Results

Genus Distribution and Tree Condition

Supplemental Table 1. Diversity and condition of trees by genus from the 2010 survey.

Refer to Appendix B for a guide to Supplemental Table 1.

Genus	% of All Trees	Population	Genus % No Decline Noted
Acer (Maple)	29%	17,400	89%
Fraxinus (Ash)	22%	12,800	90%
Picea (Spruce)	10%	5,800	100%
Tilia (Basswood)	9%	5,300	95%
Malus (Apple)	5%	2,800	98%
Populus (Poplar)	4%	2,600	85%
Gleditsia (Honey Locust)	3%	1,900	78%
Juglans (Black Walnut)	3%	1,900	85%
Betula (Birch)	2%	1,500	90%
Pinus (Pine)	2%	1,400	97%
Celtis (Hackberry)	2%	1,300	89%
Quercus (Oak)	2%	1,100	78%
Prunus (Cherry)	1%	600	85%
Catalpa	<1%	500	46%
Thuja (White Cedar)	<1%	400	100%
Morus (Mulberry)	<1%	400	100%
Aesculus (Buckeye)	<1%	300	100%
Ulmus (Elm)	<1%	200	80%
Boxelder	<1%	200	50%
Syringa (Japanese Lilac)	<1%	200	75%
Sorbus (Mountain ash)	<1%	200	100%
Ginkgo	<1%	100	100%
Salix (Willow)	<1%	100	33%
Carpinus (Musclewood)	<1%	<100	100%
Other	<1%	<100	NA

Genus Distribution by Size Class

Supplemental Table 2. Size class distribution of trees by genus from the 2010 survey.

Refer to Appendix B for a guide to Supplemental Table 2.

Genus	Population	Genus % Small Trees	Genus % Medium Trees	Genus % Large Trees	Genus % Super Trees
Acer (Maple)	17,400	14%	42%	34%	10%
Fraxinus (Ash)	12,800	10%	38%	47%	5%
Picea (Spruce)	5,800	18%	55%	28%	0%
Tilia (Basswood)	5,300	30%	44%	23%	3%
Malus (Apple)	2,800	77%	23%	0%	0%
Populus (Poplar)	2,600	44%	15%	33%	7%
Gleditsia (Honey Locust)	1,900	12%	34%	46%	7%
Juglans (Black Walnut)	1,900	17%	27%	54%	2%
Betula (Birch)	1,500	55%	29%	13%	3%
Pinus (Pine)	1,400	23%	30%	43%	3%
Celtis (Hackberry)	1,300	7%	14%	61%	18%
Quercus (Oak)	1,100	48%	17%	17%	17%
Prunus (Cherry)	600	69%	31%	0%	0%
Catalpa	500	0%	0%	64%	36%
Thuja (White Cedar)	400	0%	44%	56%	0%
Morus (Mulberry)	400	75%	25%	0%	0%
Aesculus (Buckeye)	300	17%	67%	17%	0%
Ulmus (Elm)	200	0%	0%	60%	40%
Boxelder	200	0%	0%	75%	25%
Syringa (Japanese Lilac)	200	75%	25%	0%	0%
Sorbus (Mountain ash)	200	100%	0%	0%	0%
Ginkgo	100	100%	0%	0%	0%
Salix (Willow)	100	33%	33%	33%	0%
Carpinus (Musclewood)	<100	0%	100%	0%	0%
Other	<100	0%	100%	0%	0%