

Rehoboth Beach Boardwalk
Historic Designation Task Force
229 Rehoboth Avenue
P.O. Box 1163
Rehoboth Beach, Delaware 19971



City of Rehoboth Beach

Telephone 302-227-6181
www.rehobothbeachde.gov

REHOBOTH BEACH BOARDWALK HISTORIC DESIGNATION TASK FORCE MEETING
City Hall Commissioners Room, 2nd Floor
Tuesday, April 28, 2026; 9:00 a.m.

AGENDA

	Page
1. Call to Order	
2. Roll Call	
3. Overview of Task Force charge, member makeup	
Overview of Boardwalk Historic Designation Task Force Membership - 20 Apr 2026	3
4. Approval of Minutes – Meeting held on March 24, 2026	
5. Correspondence	
6. Old Business	
A. Discuss "What makes the Boardwalk historically significant?"	4 - 6
Responses What Makes Boardwalk Historically Significant Handout - 16 Apr 2026	
7. New Business	
A. Introduction to State of Delaware Historical Markers Program, administered by Delaware Public Archives; https://archives.delaware.gov/delaware-historical-markers/ .	
• Identification of State markers already installed or pending installation within the incorporated limits of Rehoboth Beach, outside of City limits, but close by.	
• Review content on Delaware Public Archives website.	7 - 32
○ Historical Marker Program history	
○ Marker FAQs	
○ Marker criteria & eligibility	
○ Request Marker	
○ Research	
Delaware Public Archives Historical Marker Criteria, Eligibility & Process	
Delaware Public Archives Historical Marker Program Presentation - 21 Apr 2026	
• Review sample application of selected State historic markers.	33 - 41
○ Rehoboth Beach Patrol	
○ Poodle Beach (pending installation)	

- Rehoboth Beach Public Library
- [Sample DE Marker Applications RBP-PoodleBeach-Public Library](#)
 - Exercise - "Delaware Blue Historic Markers: Reading the Record"
- B. Discuss invitation by the Rehoboth Beach Museum for this Task Force to facilitate application for State Historic Marker to formally recognize a section of the beach between Virginia Avenue and Grenoble Place that was historically a Black Beach.
 - Possible consideration for the Task Force to expand its mission statement to include this project or not.
- C. Review Rehoboth Beach Boardwalk Historic Designation Task Force "Guidelines". 42
[Boardwalk Guidelines - 23 Mar 2026](#)
- D. View photo montage of recent Boardwalk construction methods and materials. 43 - 46
[Boardwalk Reconstruction begins November 2008](#)
- 8. Task Force Comments
- 9. Citizen Comment
- 10. Review future meeting dates.
- 11. Adjournment

AGENDA ITEMS MAY BE CONSIDERED OUT OF SEQUENCE

[Time may not allow for the consideration of all agenda items.]

*For additional information or special accommodations, please call (302) 227-6181 (TDD Accessible) 24-hours prior to the meeting.

The public will be provided the opportunity to make comments regarding Old Business and New Business. Comments are limited to three (3) minutes or at the discretion of the chair, one time per topic. Speakers are to state their name and address or relationship to the city.

Comments on non-agenda topics will be heard under "Citizen Comment" with the same speaker requirements and time limits.

amw: 04/21/26; posted 04/21/26

Overview of Task Force charge, member makeup

Task Force Mission.

“The Rehoboth Beach Boardwalk Historic Designation Task Force is established by the Board of Commissioners to seek and acquire historic designations for the City of Rehoboth Beach Boardwalk, specifically

- 1) in the form of a blue Delaware Historical Marker issued by the Delaware Public Archives; and
- 2) designation on the National Register of Historic Places as administered by the National Park Service and State Historic Preservation Office.”

Task Force membership.

The Rehoboth Beach Boardwalk Historic Designation Task Force (the “Task Force”) includes a total of 12 members – nine voting; three non-voting. The Village Improvement Association (VIA) is represented by a primary voting member (Kate McKenzie) and an alternative voting member (Rose Marie Patin).

Voting members

1. Heidi Nasstrom Evans
2. Kate McKenzie
3. Dan Parsons
4. Frank Cole
5. Jim Ellison
6. Wes Combs
7. Andrea Hoffman
8. Wayne Neale
9. Christopher Bright

Non-voting members

10. Michael Burton
11. Mason Preddy
12. Chair Mayor Stan Mills

Extra/alternative representing the VIA

13. Rose Marie Patin

For each meeting we need to establish minimum of five voting members present to achieve a quorum so we can formally conduct task force business

BOARDWALK HISTORIC DESIGNATION TASK FORCE

Rehoboth Beach Historical Society & Museum • 511 Rehoboth Avenue

Member Responses: What Makes the Boardwalk Historically Significant?

Compiled from responses to the exercise introduced at the March 24, 2026 inaugural meeting

At our first meeting, task force members were invited to reflect on two questions about the Rehoboth Beach Boardwalk. Responses were submitted individually in the days following the meeting. This handout collects those responses to serve as a foundation for our ongoing work — both toward a Delaware Blue Historic Marker application and a National Register of Historic Places nomination. The range and depth of thinking represented here is a strong starting point.

Question 1 — What makes the Rehoboth Beach Boardwalk historically significant?

What the group said — at a glance

Respondents consistently described the Boardwalk as the civic and economic heart of Rehoboth Beach — a place of gathering, commerce, and shared identity since the city's founding. Recurring themes include the Boardwalk as an equalizing public space open to all; its role as the primary engine of the city's economic life; its connection to the city's origins as a religious retreat and its evolution through successive community identities; the contributions of civic organizations — especially the VIA — in shaping the public infrastructure of the Boardwalk over generations; and the Boardwalk's significance as a site of social history, including the history of the African American community and beach segregation.

Individual Responses

The Boardwalk has served as Rehoboth Beach's town square. It was and continues to be the place where everyone, regardless of background, can: congregate, socialize, meet, conduct commerce, be safe.

Originally (and continues to be) the driver of the town's economic activity.

Has always served as the key attraction for visitors, a reason why they come at all.

Was the reason the city continued to exist.

Boardwalk stands for charm, tradition, enjoyment for all, inclusivity.

The city's origin was a religious retreat and quickly grew to year-round residences.

It has been magnetic in welcoming visitors from other states and Washington, DC and is the focal point and anchor of the city.

The Boardwalk construction and repairs remained wooden and it continues to welcome residents and visitors as an entrance to the beach, while other communities changed to other forms of a walkway, or stopped maintaining the walkway altogether.

The City and the Boardwalk welcomes all religious denominations, families, and lifestyles.

The boardwalk is clearly a central feature of the city with regard to our cultural, social, recreational and entertainment lives. It has full access to the beach and Atlantic Ocean, which means citizens and visitors alike can easily get to the beach and mingle. Although competition for the boardwalk has grown significantly over the decades among other features of the city and surrounding Sussex County entities and resources, the boardwalk remains a major destination, even when the boardwalk has needed repair or reconstruction. Because the boardwalk has been repaired several times and fully rebuilt on occasion, I have a hard time claiming that it is "historically significant." To me, the boardwalk is culturally, socially and recreationally significant. Its economic value is also significant, since together with the beach/ocean, it has meant commercial investments that have brought tax revenues, etc. ... What would be lost if it were gone? I think that could only be on a temporary basis. Because of its importance, the boardwalk would be quickly rebuilt.

The Dutch and English settlers, the Methodist settlers, the Dupont influence, citizens who forged commercial and tourist interests especially, the VIA ladies who wanted to address some of the unpleasant and unsightly problems of the city of Rehoboth.

Their persistence began with the lack of sidewalks and then trashcans on the Boardwalk. In 1912 they established the Rehoboth Beach Library. In 1920 they installed the surf safety line for bathers in waterlogged long suits to pull themselves out of the surf. They were instrumental in providing boardwalk lights and benches. They contributed to the original bandstand on the avenue. They continued the mosquito campaign with Mary Wilson Thompson a general's daughter who lobbied in Washington and got the second Civilian Conservation Corps Camp 1224 located in Lewes to help clean debris from the dunes! Have you heard of Colonel Corkran's role? The club restored the Cape Henlopen Lighthouse replica you see as you enter the town. They also were instrumental in the founding of the Art League and Gardner's Club, the establishment of a day care center, a fishing pier on Lake Gerar and Beach Wheels for the disabled. This group continues to thrive and donates time and money to numerous worthy causes each year!

Rehoboth Beach and its citizens were actively doing their part of protecting our country during WWII. Fear of spies and saboteurs — blackout shades, painted headlights on cars and taking part in beach patrolling to name a few.

... shipwrecks, storms that caused damage not only to the Boardwalk, but washed-out Surf Avenue, the strategic importance of guarding the shore during the war, the gatherings, bathing dress protocols, evolution history of life guards, why the Giuseppe Verrazzano Monument, etc.

It began as a religious community, then an artist community, then a gay community, then a retirement community, but always a beach community. The first beach condos for "salt life" lifestyle were constructed and still stand as an architectural testament to all the change that has come over the preceding years since the boardwalk's creation. The boardwalk has been destroyed many times, but the next generation always rebuilds to become the new caretakers to pass the history forward. I must mention the disappearance of the African American community as well.

The Boardwalk is the centerpiece of Rehoboth Beach. It is where we go to enjoy nature, exercise, meet friends, eat, hear music and more. People have enjoyed walking or sitting there for generations. Much has changed but much stayed the same. The boardwalk owes its long life to the enduring attraction of the ocean.

Question 2 — What about the Boardwalk has stayed the same since 1873, even as the physical boards have changed?

What the group said — at a glance

This question touched on one of the central challenges in our work: the Boardwalk has no original physical material — it has been repeatedly rebuilt following storms. Respondents intuitively identified the answer to that challenge: what has endured is not the wood itself, but the location, the function, the social patterns, and the meaning. The beach and ocean as enduring anchor; the Boardwalk's role as gathering place and commercial corridor; the look, feel, and basic materials; the activities people do there; and the stories and cultural landscape — these are the continuities on which a historic designation argument can be built.

Individual Responses

Was and still is a place to congregate, socialize, a safe way to visit and enjoy the beach.

Same basic materials, look and feel.

When you look at pictures from the early 1900s to today, the only things that have changed are the names of the businesses on the boardwalk and the style of clothing. From an activity perspective, people have always done the same thing when they walk the boardwalk.

The stories and the cultural landscape have not changed. It is the location that brought the people and keep them coming back, the beautiful beach and ocean.

There is no original boardwalk physical material left, which means the boardwalk lacks “integrity”. This is a problem in pursuing historic designation. What has endured, regardless of the condition of the boardwalk, is the reason it exists — the beach/ocean. The cultural, social and recreational values have not been lost due to the lack of original physical material.

Much has changed but much stayed the same. The boardwalk owes its long life to the enduring attraction of the ocean.

Looking Ahead

The responses collected here reflect two powerful convergent arguments: that the Boardwalk has served an unbroken social and civic function since 1873, and that the beach and ocean — not the boards themselves — are the enduring anchor of its significance. These are precisely the foundations of a cultural landscape approach to historic designation. At our next meeting, we will explore what that approach looks like in practice — and how the evidence members have already identified maps onto the formal criteria.



Historical Marker Criteria and Eligibility

General Criteria

- The subject of a marker may be events, places, persons, groups, or institutions significant in Delaware's local, regional, state, or national history.
- Eligibility will be determined on a case-by-case basis by the Delaware Public Archives.
- A proposed marker topic must have historic significance based on its influence, effect, or impact on the course of history or cultural development in Delaware. This significance must be clearly demonstrated and documented with appropriate primary and secondary sources in the marker application.
- Research on the marker subject must be completed prior to submitting a new marker application. Copies of this research, including citations, must be submitted with the marker application. Failing to do so will considerably delay the application review process.
- Information will not be included in a marker text unless it has been verified with appropriate documentation identified by the Delaware Public Archives staff or provided by the constituent. The Delaware Public Archives will carry out a reasonable amount of research to verify information from an applicant for use in writing the text of the marker.
- The Delaware Public Archives reserves the right to deny a marker request based on the number of similar sites already represented by the Historical Markers Program.
- Before submitting an application consider if you should consult or partner with any groups. If the application is for a school, have you notified the school district? If the application is for an individual, have you contacted their family?
- A marker application will not be approved if property owner and/or city/town does not approve of marker placement.
 - Beginning on March 1, 2021, applications must include a letter of support for the proposed historical marker from the property owner and/or city/town where the marker will be placed.

Revised 02/2021



- Markers may be subject to category-specific age requirements (see below).
 - Age requirements are taken into consideration with historic context and may be extended by the Delaware Public Archives.
 - A building, group, site or event will not be considered eligible for a marker based on age alone.
- The Delaware Public Archives reserves the right to deny a marker request that does not meet these criteria.
- Historical discoveries are made every day. New research may lead to revisions of existing markers.
- The State Archivist (Director of the Delaware Public Archives) has final approval of all marker text and may exercise the right to revision at any point in the development of the text or after a marker has been installed.

Revised 02/2021



Category-Specific Requirements

Structures / Architecture

- A building or structure may be eligible for a marker if:
 - The structure is associated with events that have made a significant contribution to the broad patterns of Delaware history.
 - The structure embodies the distinctive characteristics of a type, period, or method of construction.
- Markers will not be placed at private residences.

Places of Worship

- When researching and approving a place of worship for a historical marker the Delaware Public Archive strives to tell unique and underrepresented histories.
- A place of worship is eligible for a marker if:
 - The site/structure is connected to a significant historical event or person. The person or event cannot already be recognized on another marker.
 - The site's/structure's congregation has existed for at least 150 years.
 - The site/structure itself was constructed over 100 years ago **and** has been in continuous use since its construction.
 - The site/structure has historically significant architectural features.

Cemeteries

- A cemetery is eligible for a marker if:
 - The site derives its primary significance from distinctive design features.
 - The site is associated with or integral to historic events.
- A cemetery will not be considered eligible based solely for its notable burials or age.

Notable Delawareans

- Notable Delawarean markers will not be approved for a living person. Individuals recognized in this category must be deceased for more than 5 years.
- An individual is eligible for a marker if:
 - They have made significant contributions to the history or development of the state, region or nation, or are the key player in a major historic event.

Revised 02/2021



Notable Delawareans continued

- Individuals will not be singled out when many persons have shared equally in an event of historical importance.
- Subjects that are purely genealogical, family-related, or honorific will not be considered.

Social History / Societies / Social Groups

- Societies, social groups, and topics in social history are eligible for a marker if:
 - They can demonstrate that their specific group, hall, lodge, meeting house, etc. was integral to the history or development of the state, region or nation, or is the key player in a major historic event.
 - They can demonstrate that their group formed and/or if the event occurred more than 50 years ago.
- Individual groups, halls, lodges, meeting houses, etc. will not be considered eligible if their parent organization is already recognized and if they do not meet any other previously listed criteria.

Revised 02/2021

General Criteria:

- The subject of a marker may be an event, place, person, group, or institution significant in Delaware's local, regional, state, or national history.
- The official categories of historical markers are:
 - City/Town
 - Geography
 - Historic Location
 - House of Worship
 - Hundred
 - Notable Person
 - School
 - Social History
- Eligibility is determined on a case-by-case basis by the Delaware Public Archives.
- A proposed marker topic must have historical significance based on its influence, effect, or impact on Delaware's history or cultural development.
- Applicants must submit documentation demonstrating the topic's significance, including appropriate primary and secondary sources with citations. Incomplete or missing research will delay the review process.
- The Delaware Public Archives will conduct research to verify information submitted by applicants for inclusion in the marker text. Information will not be included unless it is verified by documentation identified by Delaware Public Archives staff or provided by the applicant.
- Before applying, consider consulting or partnering with other groups. For example, if the application concerns a school, have you notified the school district? If it is for an individual, have you contacted their family?
- All applications must include a letter of support for the proposed marker from the property owner and/or the city or town where the marker will be placed.
- The Delaware Public Archives reserves the right to deny a marker request that does not meet program criteria.
- Eligibility is subject to the Eligibility Guidelines (see below).
- Age requirements are considered in the context of historical events. Exceptions may be granted at the discretion of the Delaware Public Archives.
- A building, group, site, or event is not eligible for a marker solely based on its age.
- Listing in the National Register of Historic Places does not automatically qualify a site or structure for a State of Delaware Historical Marker.
- The Delaware Public Archives may also deny a request if a significant number of similar sites are already represented in the State of Delaware Historical Markers Program.
- The Delaware Public Archives recognizes that historical understanding evolves. New research may lead to revisions of existing markers. Some collection materials may reflect outdated or harmful language; they are preserved for historical accuracy, but the Archives is committed to improving descriptions to be more inclusive and encourages users to report concerns.
- Please see the Archives Harmful Content Advisory for more information.
- The Director and State Archivist has final approval of all marker text and may exercise the right to revision at any point in the development of the text or after a marker has been installed.

Eligibility Guidelines

Structures / Architecture

- A building or structure may be eligible for a marker if one or more of these criteria are met:

- The building or structure played a role in important historical events or movements that shaped Delaware's history in a meaningful way—locally, or as part of larger state-wide developments or trends.
- The structure embodies the distinctive characteristics of a type, period, or construction method.
- Historical markers are generally not placed at private residences.
- A structure less than 50 years old will only be considered if it is of exceptional historical importance.

Houses of Worship

- When researching and approving a house of worship for a historical marker, the Delaware Public Archives strives to tell unique and underrepresented histories.
- A place of worship is eligible for a marker if one or more of these criteria are met:
 - The site or structure is connected to a significant historical event or person.
 - Sites associated with events or individuals already recognized by existing markers or monuments may receive less favorable consideration.
 - The site or structure was established in the colonial period or the era of emancipation/reconstruction.
 - The site or structure was the first of its kind in a major denomination in the local area.
 - The site or structure has historically significant architectural features.

Cemeteries

- A cemetery is eligible for a marker if the site is associated with or integral to historical events.
- A cemetery will not be considered eligible based solely on its age.
- A cemetery less than 100 years old will only be considered if it is of exceptional historical importance.

Notable Delawareans

- Markers for notable Delawareans will not be approved for a living person; eligibility requires that the individual has been deceased for over five years.
- An individual is eligible for a marker if they made significant contributions to the history or cultural development of the municipality, state, region, or nation, or were a key player in a major historical event.
- Individuals will not be singled out when many have shared equally in an event of historical importance.
- Markers will not be approved for subjects that are exclusively genealogical, family-related, or honorary in nature.

Societies / Social Groups

- Societies, social groups, and topics in social history are eligible for a marker if one or more of these criteria are met:
 - The society or social group can demonstrate that their specific group, hall, lodge, or meeting house was integral to the history or development of the state, region, or nation.
 - The society or social group can demonstrate that it played a key role in a major historical event.
 - Groups must demonstrate that their group formed and/or the major historical event occurred over 50 years ago.
- If a parent organization is already recognized, individual branches such as groups, halls, lodges, or meeting houses will not be eligible unless they meet additional specific criteria.

Marker Process Steps

1. Check Marker Eligibility Criteria

Responsibility: *Applicant*

Determine whether the proposed subject meets the criteria for a historical marker.

2. Complete and Submit the Historical Marker Application

Responsibility: *Applicant*

The application is available on the Historical Markers Program webpage. New applications can be submitted via [the online form](#).

Please complete the application in full, including the Statement of Significance and Background information sections. Submitting an incomplete application will significantly delay your marker project.

Applicants must provide reliable primary and secondary source materials to support facts included in the historical marker narratives. The Historical Marker Program Coordinator will perform any additional research, editing, and formatting required for the marker text.

As of March 1, 2021, applicants are required to include a letter of support for the historical marker application from the property owner/municipality that owns or manages the proposed marker location. This letter will confirm that the applicant has discussed the historical marker

project with the property owner and/or local officials, and they agree to have a marker installed on their property if the Delaware Public Archives approves the new historical marker application.

3. **Application Review**

Responsibility: *Archives*

The Delaware Public Archives' Historical Markers Committee reviews the application. During this process, the Historical Markers Program Coordinator may conduct supplemental research on the marker topic to establish eligibility.

Once the review and any necessary research are complete, the applicant will be notified whether the application has been approved.

4. **Secure Funding**

Responsibility: *Archives*

Once the Historical Marker application has been approved, the Archives reaches out to the local legislators who represent the district that the marker will be in to seek financial support for the proposed historical marker.

Once financial support is gained, the Historical Markers Program Coordinator confirms funding commitments and arranges for transfers of funds.

5. **Additional Research and Writing**

Responsibility: *Archives (with Applicant coordination)*

The Historical Markers Program Coordinator conducts supplemental research on the marker topic. The Delaware Public Archives will not include information on a marker text unless that information can be verified using primary source records.

The Delaware Public Archives will work with the suggested marker text supplied by the applicant to draft marker text that conforms to program standards. Edited text will be shared with the applicant for review.

The Delaware Public Archives will work with the applicant in determining the final text for the marker. Due to time constraints, the Historical Markers Program Coordinator will only receive comments on marker text from individual(s) listed on the application. If an interested person or community group is not listed on the application, the applicant should act as the point person for receiving, assessing, and communicating feedback to DPA staff.

The Director and State Archivist of the Delaware Public Archives issues final approval of the marker text.

6. **Identify Marker Location**

Responsibility: *Archives (with Applicant coordination)*

The Historical Markers Program Coordinator seeks and receives approval of marker location from the Delaware Department of Transportation (DeIDOT), private property owners, and/or local city

and town officials as warranted.

Markers will be installed in conspicuous locations just outside of the right-of-way that are easily and safely accessible by the public.

7. Order the Marker

Responsibility: *Archives*

Please be aware that fabrication of the marker may take up to 6 months, as all historical markers are hand-lettered and forged.

The historical marker unveiling will not be scheduled until the Archives receives confirmation of the newly produced historical marker's shipping date from the forge.

8. Schedule the Unveiling

Responsibility: *Archives and Applicant (in coordination)*

The Historical Markers Program Coordinator and the applicant will work together to schedule an unveiling event for the historical marker. Whether initiated by the applicant or the Archives, the Delaware Public Archives must be consulted well in advance of scheduling a historical marker unveiling. An unveiling date will not be set until the shipping date for the marker is confirmed.

9. Plan the Unveiling Event

Responsibility: *Archives and Applicant (in coordination)*

The main unveiling event is primarily led by the Delaware Public Archives in coordination with the applicant. The Archives will handle scheduling and invitations to the sponsoring legislators. Additional details for the event will be worked out between the Archives and the applicant to ensure smooth coordination.

If the applicant wishes to plan additional activities beyond the main unveiling, they are welcome to do so independently, but should coordinate with the Historical Marker Program Coordinator to avoid scheduling conflicts.

See Marker Unveiling below for more information.

10. Marker Installation

Responsibility: *Archives*

The Historical Markers Program Coordinator will arrange for the installation of the new historical marker in the previously approved location during the week of the unveiling. The Delaware Public Archives coordinates the installation of new historical markers with property owners and the installation team. Installation is scheduled according to prior commitments and weather. Once installed, the marker will remain covered until the unveiling.

11. Marker Unveiling

Responsibility: *Archives and Applicant (in coordination)*

See *Marker Unveiling* below for more information.

Marker Unveiling

Q. Will DPA plan an unveiling for our marker?

Yes. The Delaware Public Archives (DPA) will lead the coordination of the main unveiling event in partnership with the original applicant. The Historical Markers Program Coordinator and applicant will work together to determine a suitable date and finalize details.

Please note: An unveiling date **will not be confirmed** until the shipping date for the marker has been provided by the manufacturer.

DPA will:

- Coordinate with sponsoring legislators.
- Set the date and time in collaboration with the applicant.
- Prepare and send a formal invitation.
- Create a basic printed event program.
- Attend and facilitate the event (often led by the State Archivist).

Applicants are welcome to organize **additional activities** beyond the main unveiling (e.g., receptions, tours), but should coordinate with the Historical Markers Program Coordinator to avoid conflicts.

Q. Who is responsible for planning and inviting guests?

DPA handles:

- Scheduling with the applicant and legislators.
- Sending the main invitation to the applicant and sponsoring legislators.
- Coordinating with the applicant on event structure.

The **Applicant and interested community members** are responsible for:

- Identifying and inviting any additional guests (e.g., researchers, family members, local officials, community leaders).
- Recommending any additional speakers beyond sponsoring legislators.

Please confirm the availability of key guests before publicizing the event.

Q. What is typically included in an unveiling ceremony?

While each ceremony is tailored to the subject and community, most programs include:

- Welcome by the State Archivist
- Introduction of distinguished guests
- Brief history of the marker topic (shared by the applicant)
- Remarks from sponsoring legislators and other invited speakers
- Official unveiling of the marker

Q. How long do unveiling events last?

Unveiling events generally run **20 to 30 minutes** and are held outdoors. Please keep in mind:

- Weather conditions
- Parking availability
- Site accessibility

These are standing events; DPA does not provide tents or chairs, but applicants are welcome to arrange for them if desired.

Q. Will there be a printed event program?

DPA will provide a **simple printed program** that includes:

- Event title and location
- Order of proceedings

- Names of speakers and officials
- Photo of the marker

Sample programs from past unveilings are available upon request. If you'd like to include logos, sponsors, or additional elements, you may create a separate handout or collaborate with the Program Coordinator.

Q. Can other groups or officials be included in the program?

Yes—but to keep the event concise, we recommend limiting the number of speakers. If other individuals (e.g., historians, educators, community leaders) played a key role and should be recognized or invited to speak, please notify the Historical Markers Program Coordinator early in the planning process.

Q. What equipment does DPA provide?

DPA will bring:

- A portable lectern
- A microphone
- A speaker

DPA does not provide:

- Chairs
- Tents
- Water or refreshments

If your organization or municipality would like to provide additional equipment or services, you are encouraged to do so.

Q. What if we want to arrange transportation or additional logistics?

Applicants are welcome to pursue transportation options (such as arranging a bus for attendees), but these should be coordinated independently. DPA is happy to assist with planning guidance, but cannot guarantee logistical support beyond the core ceremony.

For example, for a former unveiling, a school district was contacted to explore the possibility of providing a bus for guests to the marker site from the parking location. While not necessary, such efforts are appreciated and can improve accessibility.

Q. Will a press release be issued for the marker unveiling?

The Delaware Public Archives will post an **advisory** on news.delaware.gov for every historical marker unveiling to notify the public and media of the event details.

In some cases, the Archives may also issue a formal **press release** in addition to the advisory. The decision to release a press statement is made at the discretion of the Archives and will depend on factors such as the subject matter, public interest, and timing.

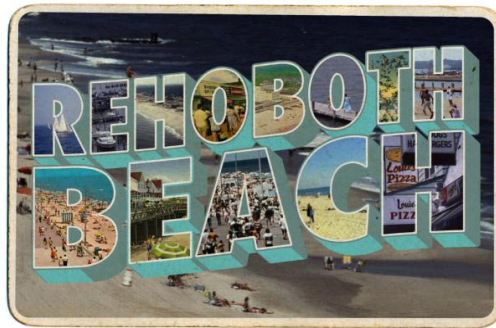
Q. Whom should I contact with questions or to start planning?

Please reach out to the Historical Markers Program Coordinator at the Delaware Public Archives for help with:

- Confirming shipping and installation timelines
- Scheduling the unveiling
- Reviewing a sample program
- ...more

REHOBOTH BEACH BOARDWALK

SEEKING HISTORICAL RECOGNITION



Created for the Rehoboth Beach Boardwalk Historic Designation Task Force meeting of April 28, 2026 by Mayor Stan Mills

REHOBOTH BEACH BOARDWALK

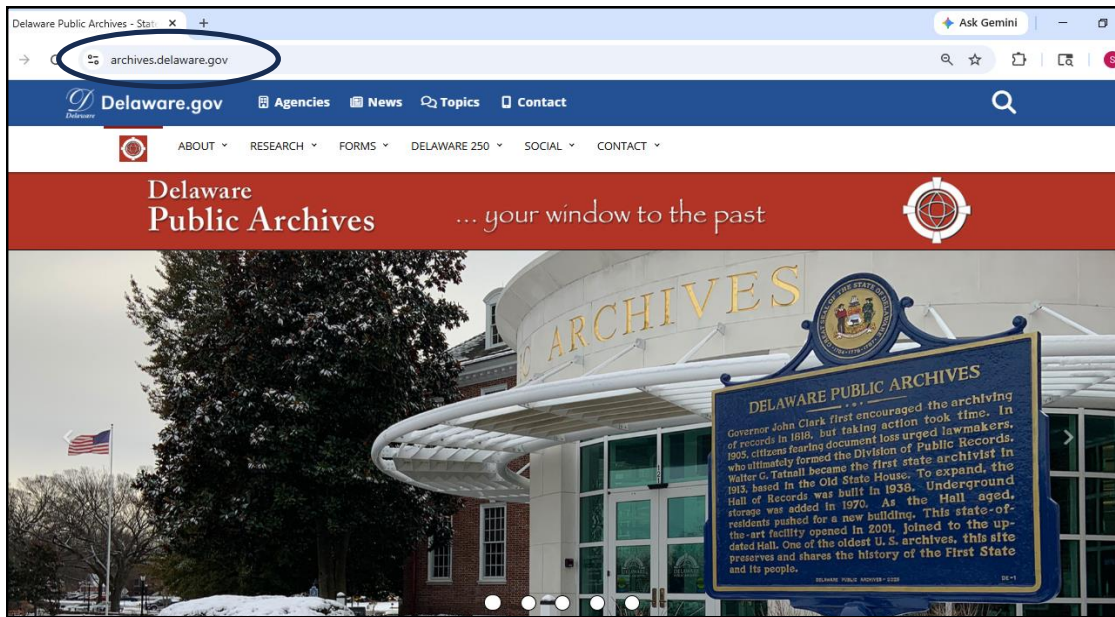
SEEKING HISTORICAL RECOGNITION ON A STATE LEVEL AND/OR FEDERAL LEVEL

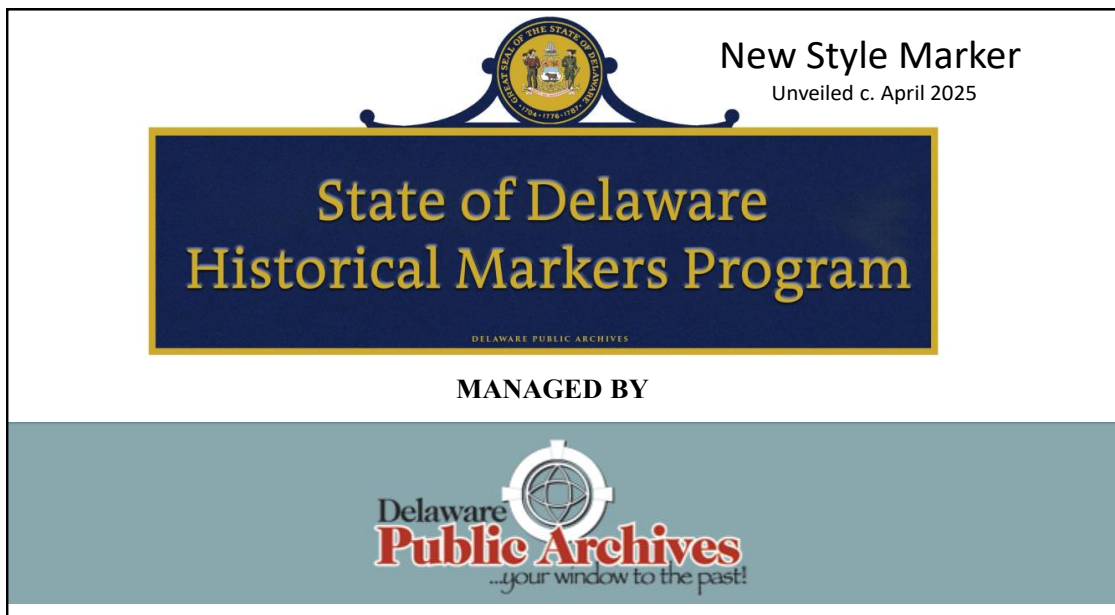
STATE RECOGNITION:

- 1) STATE OF DELAWARE HISTORICAL MARKERS PROGRAM
ADMINISTERED BY THE DELAWARE PUBLIC ARCHIVES

FEDERAL RECOGNITION:

- 2) NATIONAL REGISTER OF HISTORIC PLACES, INITIALLY ADMINISTERED BY THE
STATE'S HISTORIC PRESERVATION OFFICE WITH FINAL EVALUATION BY THE
NATIONAL PARK SERVICE





The graphic features the Delaware State Seal at the top center, flanked by decorative blue scrollwork. To the right of the seal, the text "New Style Marker" is written in a bold, black, sans-serif font, with "Unveiled c. April 2025" in a smaller font below it. A large, dark blue rectangular banner with a gold border contains the text "State of Delaware Historical Markers Program" in a gold, serif font. Below this banner, the words "DELAWARE PUBLIC ARCHIVES" are written in a small, black, sans-serif font. Underneath the banner, the text "MANAGED BY" is centered in a bold, black, sans-serif font. At the bottom of the graphic is a light blue horizontal bar containing the Delaware Public Archives logo, which includes a stylized globe icon and the text "Delaware Public Archives ...your window to the past!"

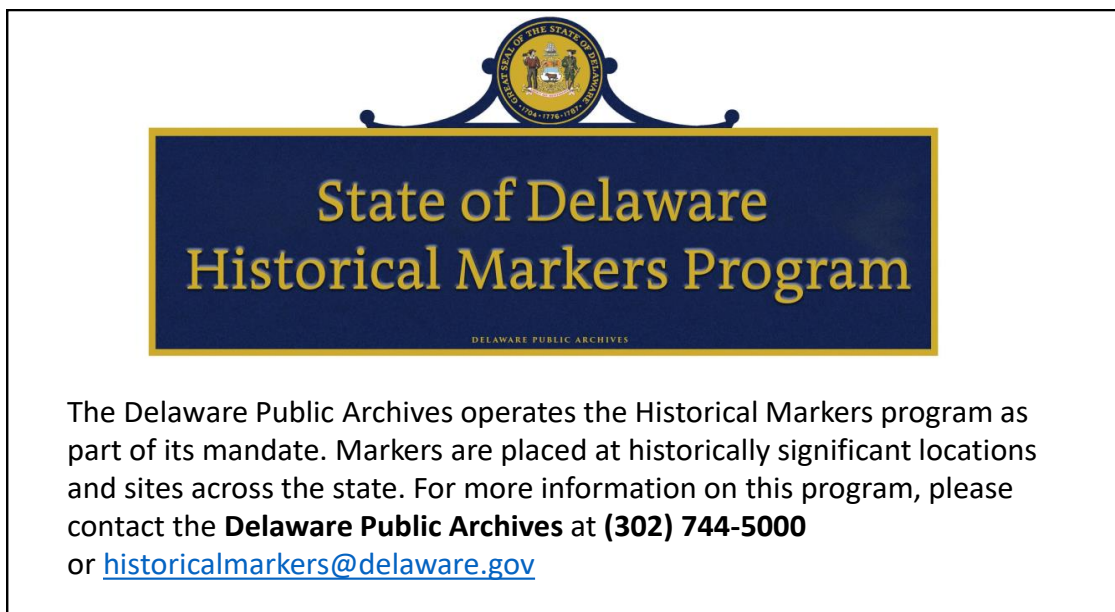
New Style Marker
Unveiled c. April 2025

State of Delaware
Historical Markers Program

DELAWARE PUBLIC ARCHIVES

MANAGED BY

Delaware
Public Archives
...your window to the past!



The graphic features the Delaware State Seal at the top center, flanked by decorative blue scrollwork. A large, dark blue rectangular banner with a gold border contains the text "State of Delaware Historical Markers Program" in a gold, serif font. Below this banner, the words "DELAWARE PUBLIC ARCHIVES" are written in a small, black, sans-serif font.

State of Delaware
Historical Markers Program

DELAWARE PUBLIC ARCHIVES

The Delaware Public Archives operates the Historical Markers program as part of its mandate. Markers are placed at historically significant locations and sites across the state. For more information on this program, please contact the **Delaware Public Archives** at **(302) 744-5000** or historicalmarkers@delaware.gov

HISTORICAL MARKERS PROGRAM HISTORY

The State of Delaware Historical Markers Program traces its origins to 1929, when Governor C. Douglass Buck appointed a committee to review Delaware's notable historic sites and develop a way to identify them. In 1931, the General Assembly of Delaware passed an act establishing a commission to erect historical markers throughout the state. The markers in each county were numbered sequentially as they were proposed, preceded by NC (New Castle), K (Kent), and S (Sussex) to note the county in which they were located. Since the 1930s, the State of Delaware has erected over 700 markers. The Delaware Public Archives has administered the Historical Markers Program since 1990.

Community members and the state legislature have always played active roles in the Historical Markers Program. Today, every new state historical marker is the result of partnerships between the Delaware Public Archives, state legislators, and local community members. Funding for each marker comes as a result of a direct request to members of the General Assembly from interested individuals and organizations. As a result, the markers represent Delawareans' shared history and become a source of pride for local communities.





SC-90 Installed in 1991. Reinstalled in 2022.

Sponsored by The Honorable John R. Schroeder,
House of Representatives, 1991.

On January 27, 1873, the “Rehoboth Beach Camp Meeting Association of the Methodist Episcopal Church” was incorporated by the Delaware legislature for the purpose of establishing “a permanent camp meeting ground and Christian seaside resort.” With the coming of the railroad in 1878, the growth of the community was accelerated. On March 19, 1891, an act was passed incorporating the municipality as Cape Henlopen City. The name was formally changed to Rehoboth in 1893. Since its founding the City of Rehoboth Beach has continued to be one of the most popular resorts on the Atlantic coast, attracting thousands of visitors each year.



SC-250. Originally Installed in 2015.

At the turn of the 20th Century, Rehoboth Beach was a quaint church camp village and summer residence for many seeking relief from city life. Horses, wagons, and buggies traveled the streets. There were no paved sidewalks, crosswalks, street lamps, lifeguards, benches, water fountains, or trash cans. Lake Gerar was a swamp and Silver Lake was infested with mosquitoes. To address some of the needs and concerns of the village, a group of dedicated women joined together to improve the quality of life in Rehoboth. They met in December 1909 and established the Village Improvement Association. The VIA promoted pedestrian safety by raising money to help pay for sidewalks, crosswalks, lights, and signs in Rehoboth. Responsible for establishing the first public library in Rehoboth, the group often hosted the books in their homes, opening their doors to the community in the years before the library had a permanent location. The VIA spearheaded mosquito eradication and continues to engage in town beautification and preservation efforts. A supporter of the arts and education, the VIA played a major role in the establishment of the Rehoboth Art League and created scholarships for local art and nursing students. The well-being of women, children, the disabled and the elderly remain a focus of the organization. For over 100 years the VIA has enriched coastal Delaware through their dedication to improving the community and themselves with hard work and charitable acts.



SC-262, originally installed in 2017 as SC-159

The Rehoboth Beach Public Library was established by the Village Improvement Association (VIA) in 1912 in order to provide free access to books for the community. In its early years the library moved between VIA members' homes and public spaces. In June 1942 the State Library Commission designated space for the library at City Hall, where it remained for 43 years. VIA members served as librarians until 1968 when the first professional librarian was hired. The library relocated to Rehoboth Avenue in 1985, where it has remained since. The east end addition was completed in 2000.



SC-265: originally installed on 4/26/2018.

The Great March Storm of 1962 significantly damaged homes, businesses and roads along the Delaware coast. Following the storm, the Village Improvement Association (VIA) used the wood from nearby damaged buildings and the Rehoboth Beach boardwalk to construct the Children's Fishing Pier as a memorial. The pier was completed in 1963 and was scheduled for demolition in 2007 to make way for the new brick bridge over Lake Gerar. The VIA successfully petitioned city leaders to keep the pier in Lake Gerar Park for children of all ages to enjoy.



SC-281 Installed in 2019.

The Cape Henlopen Lighthouse stood on the Great Dune near Lewes from 1765 through 1926. The lighthouse was a widely-recognized landmark in the region and in 1924, a realtor built a replica of it as his Rehoboth Beach office. The Village Improvement Association (VIA) purchased the replica in 1928 and moved it from the first block of Rehoboth Avenue to the entrance of the city near Grove Street. The VIA maintained the lighthouse until 1971, when they transferred ownership to the City of Rehoboth Beach. In 2004, the replica was relocated to the center of the new traffic circle on Rehoboth Avenue as part of a streetscape enhancement project.

Sponsors:

- The Honorable Ernesto B. "Ernie" Lopez,
Delaware State Senate, 2019
- The Honorable Peter C. "Pete" Schwartzkopf,
Delaware House of Representatives, 2019



SC-285 Installed in 2022.

When at the beach, women of the early 20th century wore woolen bathing attire that covered most of their bodies. When wet, the suits were heavy, and it became difficult to leave the surf and get back onto the beach without help. The women of the Village Improvement Association (VIA) solved this by funding Surf Safety Lines that were anchored in the sand and attached to a buoy offshore. When ready to leave, bathers could hold on to the line and pull themselves out of the water to the shore.

Sponsor:

- The Honorable Ernesto B. "Ernie" Lopez,
Delaware State Senate, 2022
- The Honorable Peter C. "Pete"
Schwartzkopf,
Delaware House of Representatives, 2022



“The Rehoboth Beach Patrol (RBP), founded in 1921 by Benjamin F. Shaw and the American Red Cross, has overseen the safeguard of the 2-mile area of beach within the corporate city limits of Rehoboth. The RBP has performed a multitude of actions including medical aid, rescues, beach evacuations, and returning lost children. In 1977, the RBP Lifeguard Olympics began, with lifeguards from Delaware and surrounding states competing in swimming, running, and rescue events. The Junior Lifeguard Program, since 1997, has introduced children to water safety, first aid, and surf techniques to promote ocean-safety awareness and lifeguard skills.”

Sponsored by
RB resident Kathy McGuiness

SC286 Installed/dedicated August 5, 2025

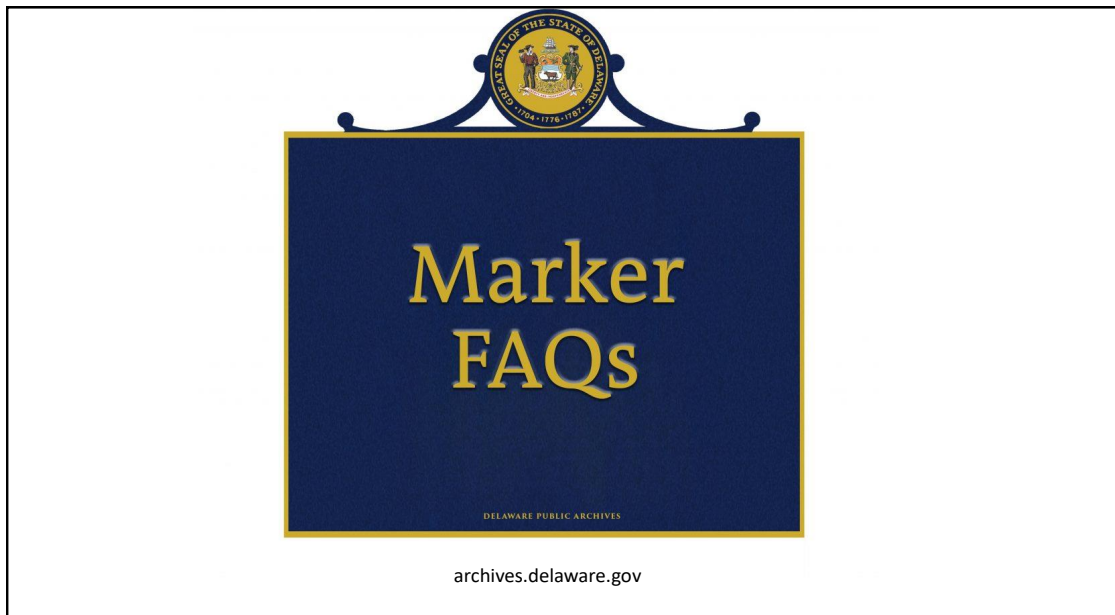
PENDING HISTORICAL MARKER



Sponsored by
RB resident
Frank Cooper

AWAITING INSTALLATION

Proposed language: “Since the 1930s, Rehoboth Beach has drawn LGBTQ residents and visitors seeking a sense of community and refuge. South of the Boardwalk, this beach provided a space away from the main crowds, where people could gather openly and safely. The area just south of here, near the old Carpenter Mansion, was popular for decades, but this section gained popularity in the late 1970s and came to be known as “Poodle Beach,” although the origin of the name is unclear. From 1988 to 2019, it hosted the annual Labor Day Drag Volleyball Game, drawing thousands. Today, Poodle Beach remains a well-known LGBTQ destination.”



“General Historic Marker Questions”

MARKER FAQs

Q. How much does a historical marker cost?

As of January 1, 2025, the total cost of a new historical marker is \$3,310. The cost includes the marker fabrication, shipping, and installation. Historical markers are funded by state legislators using public money from the state Community Transportation Fund. After the application is approved, the Delaware Public Archives will work to secure financial support for the marker, which must be obtained from the legislators representing the district where the marker will be placed.

Q. Why is the text for the historical markers so short? Aren't there some markers with longer text? How can I get one of those?

The Historical Markers Program has been in existence since 1931, and the style of historical markers has changed over time. The Delaware Public Archives continues to maintain the older styles of historical markers, but only produces new powder-coated, cast-aluminum markers. The current markers are high-quality, durable roadside signs that highlight the concise histories of significant sites. The narrative section of the current style of markers has a limit of 650 characters, including letters, spaces, and punctuation.

Q. How can I find out more about the subject of a historical marker?

Please [contact the Delaware Public Archives](#) to learn more about any historical marker subject.

Q. Why isn't a historical marker listed on your website?

MARKER FAQs

The Delaware Public Archives is actively adding markers to the website on a weekly basis to have all markers administered through the State of Delaware Historical Markers Program available online.

This website only lists markers that were installed as part of the Delaware Public Archives' Historical Markers Program. It does not include markers and plaques placed by communities or private entities. If you find an error on the online inventory and/or if you believe a marker has been left off the website, please [contact the Historical Markers Program Coordinator](#).

Q. How do I report a missing or damaged historical marker?

Use the [Report a Missing or Damaged Marker form](#) on the website to report a missing or damaged historical marker or contact the Historical Markers Program Coordinator at historicalmarkers@delaware.gov or 302-744-5000. Once the Delaware Public Archives is notified about a damaged marker, the damage will be assessed, and the next steps will be determined.

Q. Can I repaint or repair a damaged historical marker or relocate a marker on my own?

Historical markers are the property of the State of Delaware. Please do not attempt to relocate, repaint, or repair markers on your own. The manufacturer must make most repairs of the marker. Relocations must be completed by authorized vendors. Attempting to relocate or repair the marker on your own will damage the marker, possibly irreparably.

Q. Can I install the historical marker on my own?

MARKER FAQs

Only the Delaware Public Archives is authorized to install historical markers. We work with a local company to professionally install all markers, which ensures that markers are installed consistently and in accordance with the manufacturer's specifications and the Delaware Department of Transportation's guidelines.

Historical markers are the property of the State of Delaware. Once installed, markers cannot be repaired, refurbished, or relocated without permission from the Delaware Public Archives. If you recognize that a historical marker needs attention, please submit a [Missing or Damaged Marker Form](#) and/or [contact the Historical Markers Program Coordinator](#).

Q. If the marker is damaged, can I keep it?

Markers are the property of the State of Delaware. All damaged markers must be returned to the Delaware Public Archives.

“Applying for a Historical Marker”**MARKER FAQs**

Q. What is the deadline for applying for a new historical marker?

The Delaware Public Archives accepts and reviews applications for new historical markers on a rolling basis throughout the year.

Q. What topics are eligible for a new historical marker?

Please see the information on Historical Marker Criteria and Eligibility. A few things to note about new historical marker topics:

- Delaware historical markers are intended to recognize subjects that are especially noteworthy, of lasting impact, or that represent major themes in Delaware or American history.
- Reliable primary and secondary sources must support the topics and facts presented in the marker text.
- Historical markers are not intended to editorialize or pass judgment but to present straightforward and undisputed historical facts.
- The Delaware Public Archives avoids the use of subjective and superlative terms like “first,” “best,” “most,” or “last.” Often, such terms are anecdotal and cannot be verified with existing primary sources.
- The historical landscape is always changing. The Delaware Public Archives refrains from making definitive statements about the current use of a location, which could render the marker inaccurate if the site changes.

MARKER FAQs

Q. My property is listed on the National Register of Historic Places. Does that mean it qualifies for a historical marker?

Listing on the National Register of Historic Places is an honor, but it does not automatically qualify a site or structure for a State of Delaware Historical Marker. A new marker application is still required for these topics and locations.

If you are looking to obtain a National Register Marker for your site or structure, please note that these are not provided by the Delaware Public Archives. However, you may visit [The National Park Service: National Register of Historic Places \(Opens in a new window.\)](#) for more information.

Q. Will the Delaware Public Archives research the historical marker for me?

The Delaware Public Archives expects that research on the marker subject has been completed prior to submitting a new marker application. Copies of this research, including citations, must be submitted with the marker application. Failing to do so will considerably delay the application review process. The Historical Markers Program Coordinator will conduct additional research into the subject using the Archives’ resources to fact-check and clarify details.

MARKER FAQs

Q. My state legislator says they will sponsor a marker. Why do I need to apply to the Delaware Public Archives?

The Historical Markers Program could not be successful without the support of state legislators. However, the program is an outreach of the Delaware Public Archives, which maintains oversight of the markers throughout the state. The Archives utilizes established criteria (LINK) and an [application process](#) to ensure that historical markers accurately represent state and local history. Once a historical marker application is reviewed and approved, the Historical Markers Program Coordinator works with state legislators to confirm and secure funding for the new markers.

Q. How long does it take for a new historical marker to be made?

Each historical marker project is unique and involves a variety of considerations. From research and writing to site selection and scheduling, any stage of the process can affect the overall timeline.

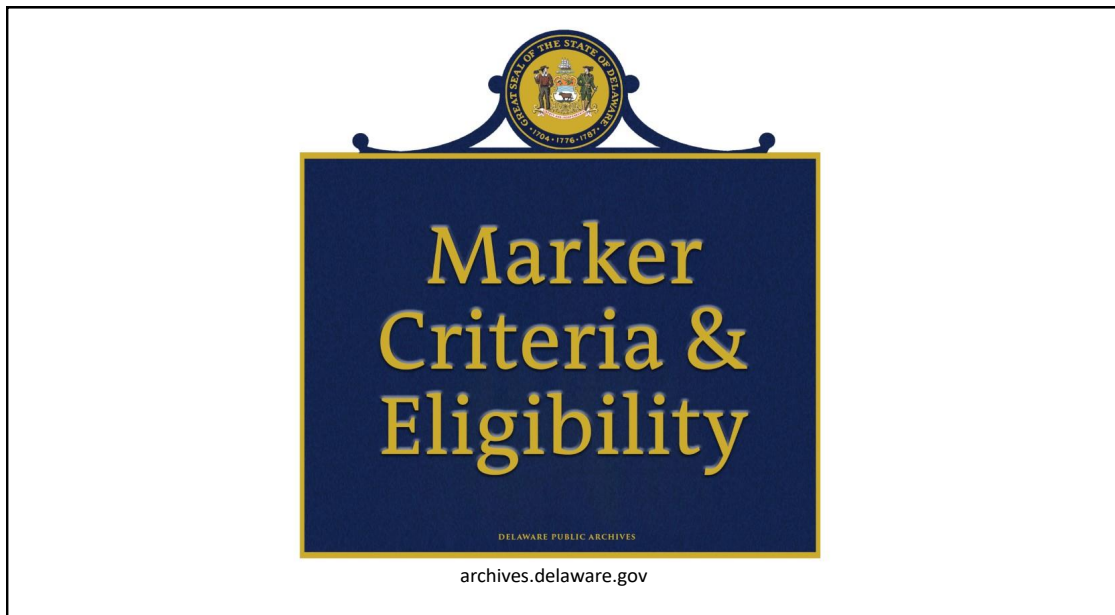
On average, a new marker process typically takes between 18 and 24 months from application approval to marker dedication. Marker fabrication itself can take 4 to 6 months or more. If you hope to dedicate a new historical marker for a particular event or anniversary, please initiate the process early.

Also see "Marker Process Steps"



Application

<file:///C:/DATA/Mayor%20Mills/Committees-Commissions-Boards/Boardwalk%20Historic%20Recognition%20Task%20Force/Boardwalk%20TF%20Meetings/04-28-26%20BW%20meeting/DE%20Historic%20Markers%20Application.html>



<https://archives.delaware.gov/delaware-historical-markers/historical-marker-criteria-and-eligibility/>

General Criteria, excerpted:



- The subject of a marker may be **events, places, persons, groups, or institutions** significant in Delaware's local, regional, state, or national history.
- Eligibility will be determined case-by-case by the Delaware Public Archives.
- A proposed marker topic must have historical significance based on its influence, effect, or impact on the course of history or cultural development in Delaware.
- Research on the marker subject must be submitted with the marker application.
- Information to be included in a marker text must be verified with appropriate documentation identified by the Delaware Public Archives staff or provided by the constituent.

<https://archives.delaware.gov/delaware-historical-markers/historical-marker-criteria-and-eligibility/>

General Criteria, continued:



- The Delaware Public Archives reserves the right to deny a marker request based on the number of similar sites already represented by the Historical Markers Program.
- Before applying, consider consulting or partnering with any groups. For example, have you notified the school district if the application is for a school, or if it is for an individual, have you contacted their family?
- Applications must include a letter of support for the proposed historical marker from the property owner and/or city/town where the marker will be placed.
- Markers may be subject to category-specific age requirements (see below).
 - Age requirements are considered with historical context and may be extended by the Delaware Public Archives.
 - A building, group, site, or event will not be eligible for a marker based on age alone.

<https://archives.delaware.gov/delaware-historical-markers/historical-marker-criteria-and-eligibility/>



Category Specific General Criteria:

Structures / Architecture:

- A building or structure may be eligible for a marker if:
 - The structure is associated with events that have significantly contributed to the broad patterns of Delaware's history.
 - The structure embodies the distinctive characteristics of a type, period, or construction method.
- Markers will not be placed at private residences.

Places of Worship, Cemeteries, Notable Delawareans, Social History, Societies and Social Groups.

These categories each have their own general criteria omitted here.

See also "Historical Marker Criteria & Eligibility embedded into April 28 agenda

END
DE Public Archives
Historic Marker Program
Slide Show

See other related documents embedded
into April 28 agenda



121 Martin Luther King Jr. Blvd. N | Dover, DE 19901 | (302) 744-5000

Historical Marker Application

Proposed Marker Information (required info is in red)

Suggested Marker Topic: Date of Application:

Preferred Location (Please provide the exact address or GPS Coordinates):

Town: County:

The reason this location was chosen:

Property Information
 Public or Private Property:

 Owner's Permission (if private):

Your Contact Information

Full Name: Phone Number:

Email Address: Organization (if applicable):

Street Address:

City: State: Zipcode:

*Please complete both sections found on Page 2 of this application before submitting.
 Incomplete applications will not be reviewed or considered.*

Funding Statement

Historical markers are funded on an individual basis by local legislators. Financial support must be obtained from a local Senator or Representative *after* the marker application has been approved by the Delaware Public Archives. Once support is gained, the legislator will notify the Archives and we will move forward with the production of a marker.

DPA Office Use Only

Date Received: Approved by:
 Date Approved:



121 Martin Luther King Jr. Blvd. N | Dover, DE 19901 | (302) 744-5000

Historical Marker Application Supplemental Information

Please include or attach the following information

1. Statement of Significance

On an attached sheet or document or in the text box below, please explain in a thorough but concise typed statement why the proposed subject is important and why it should be commemorated with a marker. Please refer to the [guidelines and criteria](#) when writing your statement.

The area of beach in the City of Rehoboth Beach commonly referred to as "Poodle Beach" has been an historic refuge for members of the LGBTQ community for over 70 years. In the past when the LGBTQ community faced pervasive, often violent discrimination, this one area of beach provided fun, relaxation, and socializing free from harassment. For decades, it was one of the few such beach resorts in the United States that were safe for members of the LGBTQ community. It is still popular today and is considered one the city's great assets. Although you can find numerous mentions of Poodle Beach in online travel guides and print articles, there has never been any official recognition of this historic and living asset. To honor Pride month in June of 2021, I suggest adding an historical marker at the entrance of Poodle Beach to officially recognize the significance of this area not only for the LGBTQ community, but also for the City of Rehoboth Beach community and its commitment to diversity and inclusivity.

2. Background Information

On an attached sheet or document or in the text box below, please provide a typed list of relevant facts, notes, and/or information pertaining to the proposed marker subject. Please include citations to the resources you used to research this topic. This information will be helpful in researching and writing the marker text. Please note: DPA staff will edit proposed marker text to conform to research and format standards, including space limitations.

The text for the Marker I am requesting will hopefully be the result of a collaborative effort by members of the Rehoboth Beach community and the members of the Delaware Archives. Because of it's secretive nature in it's early years there is little if any written history of Poodle Beach's early years. There are older citizens of Rehoboth beach who remember it's past and have heard legend from earlier generations. These people need to be officially interviewed and although many specifics may be lost in time the general story and it's present significance can be ascertained. There are some mentions of it in news publications from the mid 80s forward. As is often the case with history there are conflicting details, but the basic story is well established and Poodle Beach's existence and significance is not in question. I suggest disputed items be left out of the Marker's text. I have provided a few links to online material regarding Poodle Beach but none of these are what I would consider the definitive story.
<https://www.camprehoboth.com/letters/2018/may-18-2018-how-come-it%E2%80%99s-poodle-beach>

Save & Email, Print, or Clear this form:

Save for Email

Print

Clear

Date Revised: 05/2019



121 Martin Luther King Jr. Blvd. N | Dover, DE 19901 | (302) 744-5000

Historical Marker Application

Proposed Marker Information (required info is in red)

Suggested Marker Topic: Date of Application:

Preferred Location (Please provide the exact address or GPS Coordinates):

Town: County:

The reason this location was chosen:

Property Information

Public or Private Property:

Owner's Permission (if private):

Your Contact Information

Full Name: Phone Number:

Email Address: Organization (if applicable):

Street Address:

City: State: Zipcode:

*Please complete both sections found on Page 2 of this application before submitting.
Incomplete applications will not be reviewed or considered.*

Funding Statement

Historical markers are funded on an individual basis by local legislators. Financial support must be obtained from a local Senator or Representative *after* the marker application has been approved by the Delaware Public Archives. Once support is gained, the legislator will notify the Archives and we will move forward with the production of a marker.

DPA Office Use Only

Date Received: Approved by:

Date Approved:



121 Martin Luther King Jr. Blvd. N | Dover, DE 19901 | (302) 744-5000

Historical Marker Application Supplemental Information

Please include or attach the following information

1. Statement of Significance

On an attached sheet or document or in the text box below, please explain in a thorough but concise typed statement why the proposed subject is important and why it should be commemorated with a marker. Please refer to the [guidelines and criteria](#) when writing your statement.

This Marker denotes historical significance that has crossed many generations and Delawareans. The Rehoboth Beach Patrol (RBP) has been not only a popular reflection of the nations summer capital.

The RBP has shown historic significance based on its influence, effect, or impact on the course of history or cultural development in Delaware, especially in Eastern Sussex County.

My father John Kramedas would speak of his fond memories when he was a lifeguard, with his brother Greg under the Captain Coveleski, who was also his football coach. At that time there were under 20 guards protecting the Beach.

These courageous members of the RBP have been guarding and saving lives for generations

2. Background Information

On an attached sheet or document or in the text box below, please provide a typed list of relevant facts, notes, and/or information pertaining to the proposed marker subject. Please include citations to the resources you used to research this topic. This information will be helpful in researching and writing the marker text. Please note: DPA staff will edit proposed marker text to conform to research and format standards, including space limitations.

Since its founding in 1921, the Rehoboth Beach Patrol has enjoyed a proud history rich in tradition and excellence.

The new beach patrol headquarters was built in 1962 at Baltimore Ave. and the Boardwalk, with a complete First-Aid facility. This provide historic significance.

Save & Email, Print, or Clear this form:

Save for Email

Print

Clear

Date Revised: 05/2019

DELAWARE PUBLIC ARCHIVES
HISTORICAL MARKER APPLICATION

Proposed Marker Information

Suggested Marker Topic: **Rehoboth Beach Public Library**

Location: County: Sussex City/Town: Rehoboth Beach

Applicant Contact Information

Contact Name: Barbara Beatty Daytime Telephone:

Email Address: _____

Applicant Organization (if applicable): Village Improvement Association

Street Address: Grenoble Place at the Boardwalk

City: Rehoboth Beach State: Delaware Zip Code: 19971

Statement of Significance

on an attached sheet please explain in a thorough but concise typed statement why the proposed subject is important and why it should be commemorated with a marker. Refer to the guidelines and criteria when writing your statement.

See attached Page 1 please

Proposed Marker Location

Preferred Location (provide Exact Address, Directions, or GPS Coordinates):

226 Rehoboth Avenue, Rehoboth Beach, DE 19971

Why was this location chosen:

It is the current location of the Rehoboth Beach Public Library

is the location on: Public Property _____ Private Property yes

If on private property do you have permission from the owner? Yes xxx No: _____

Background Information

Please provide on a separate sheet of paper a typed list of relevant facts, notes, and/or information pertaining to the proposed marker subject. This information will be helpful in beginning the research process and writing the marker text. (Please note that the Delaware Public Archives Staff will write and has the final say on marker text and will edit and revise to conform to research and format standards, including space limitations.)

Please see attached:

Page 2: This is an abbreviated narrative history of the formulation of the Rehoboth Beach Public Library.

Page 3: This is a six page chronological history compiled by the Rehoboth Beach Public Library of the Village Improvement Association's (VIA) creation of the library, the nurturing of the library by the women of the VIA throughout the decades, the development of the current space, building of the library and its status as of 2001.

Funding

Historical markers are funded on an individual basis by local legislators. Financial support must be obtained from a local Senator or Representative only after the marker application has been approved by the Delaware Public Archives. Once support is gained the legislator will notify the archives staff and we will move forward with the production of a marker.

Funding has been approved by both Delaware Speaker of the House Pete Schwartzkoph and State Senator Ernie Lopez.

Please complete all fields. Incomplete marker applications will not be reviewed or considered. If you have any questions please contact Kevin Barni at (302) 744-5015.

Page 1 Attachment:

The mission of the Village Improvement Association (VIA), a non-profit organization, founded in 1909, was and still is to serve the community through volunteer service and financial support. The VIA continues to be instrumental in identifying many needs in the Rehoboth Beach community. VIA women also initiate and provide many solutions to those needs. During the VIA early years, one need the women saw was the lack of a public library where men, women and children could go for books to enhance and enrich their lives.

In 1912, through fund raising events such as card parties, a VIA stipend and personal pledges, these dedicated women began a public library in Rehoboth Beach. The first books approved by the State were purchased by the VIA women and the library began its long and rich history.

According to a 1912 note of objection for using the Union Methodist Church as a library, there is a possibility of the VIA operating a library prior to 1912. (See Chronology – Rehoboth Beach Public Library Attachment #3.)

QUEST FOR AN HISTORIC MARKER IN RECOGNITION
OF THE VILLAGE IMPROVEMENT ASSOCIATION'S
FOUNDING OF THE REHOBOTH PUBLIC LIBRARY IN 1912

In 1912, the Village Improvement Association (VIA), a non-profit organization founded in 1909 and dedicated to serving the Cape Henlopen community through volunteer service and financial support, established the first public library in Rehoboth Beach.

VIA members entirely supported the library with private donations of money, books and other materials and kept the library in the private homes of its members as well as the VIA Clubhouse. Throughout the decades, the VIA library enjoyed the hospitality of other sites as well, such as local churches, Rehoboth Beach City Hall, Fire House and other local venues. VIA Presidents, including Anna Hazzard, and many other VIA members served as the librarians.

In 1985, the library moved to the former telephone company building across Rehoboth Avenue from City Hall on a 50-year lease from the city at \$1 per year. A Capital Campaign was developed to renovate and furnish it. In 1986, a lot east of the library was donated to the library by Naon Juan Craft for a reading garden and in 1988, concerned about space, the library Board of Trustees began planning a new Capital Campaign for expansion on adjoining lots after buying the property east of the reading garden.

Friends of the Rehoboth Beach Public Library was organized in 1991 and in 1992, the city Fathers deeded the library building and its lot to the library in perpetuity as long as it was used for library purposes.

Currently , the Rehoboth Beach Public Library provides an extensive collection of books and audio/video tapes and books, as well as a large Meeting Room often used for art and photographic exhibits, both children and adult works, a Business Center, a Computer Center, Tutorials for electronic devices, and much more. The VIA continued support is still evident in the Rehoboth Public Library with annual grants for new books as well as purchasing books and volunteer time.

Page 3:

CHRONOLOGY
REHOBOTH BEACH PUBLIC LIBRARY

Attached

As compiled by the library and dated September, 1995.

Guidelines

We are a group of volunteers brought together because we care about the history of Rehoboth Beach and its boardwalk. These guidelines are simply about how we will work together — with respect for one another, clarity about how decisions get made, and care for the integrity of our process.

At Our Meetings

- We listen to one another and make room for every voice. Everyone at the table has something to contribute.
- We keep our discussions constructive and on topic. Mayor Stan Mills and Dr. Heidi Nasstrom Evans will facilitate our meetings and manage the agenda.
- If anyone has a concern — about the work or about how things are going — the best place to raise it is directly with the co-chairs, not at a meeting.

How Decisions Get Made

- Mayor Mills and Dr. Evans co-chair the task force and are responsible for guiding its work. Everyone's ideas and expertise are important — that's the whole point of having a task force — and the co-chairs will make sure all voices are heard as we move forward together.
- As a city-appointed task force doing work with real public visibility, it's important that communications with outside parties — state and county agencies, preservation organizations, elected officials, and the press — go through the co-chairs so that we speak with one voice.

Keeping Things Confidential

- Our working discussions, drafts, and internal materials are shared within the task force and not for outside distribution.

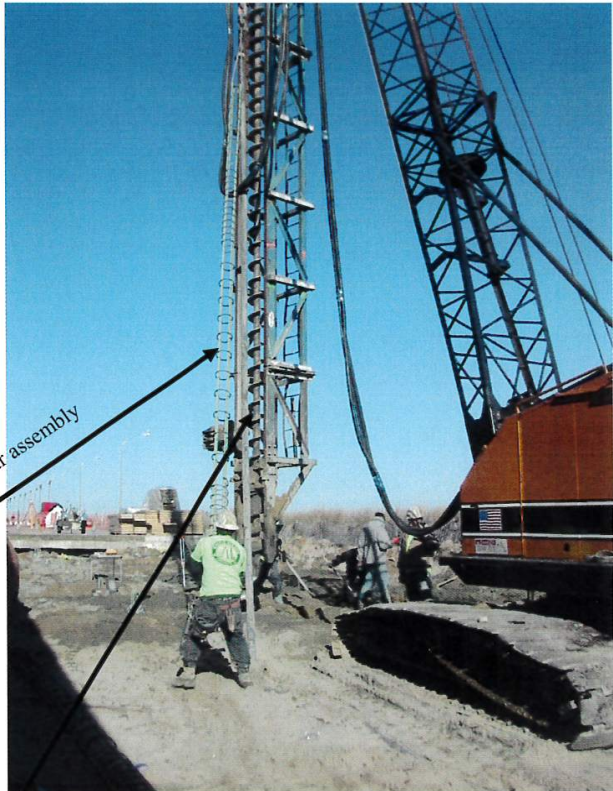
City of Rehoboth Beach Boardwalk — Boardwalk Reconstruction Project

Demolition begins November 2008



City of Rehoboth Beach Boardwalk — Boardwalk Reconstruction Project

Augered Concrete Pilings + Formed Concrete Beams



- 1) Auger drills hole—14" diameter, 29' deep
- 2) As auger is removed, concrete is pumped through center of auger to fill hole and create piling.
- 3) Pre-formed rebar assembly is lifted by crane and inserted into hole with concrete.

Beam form with rebar (shown before second side and ends of form are positioned).
Forms are built in place over pilings.
Beams vary, average 20" w x 19" deep.
Beam bottoms happen to rest on grade—convenient!



Completed cured piling.



Rows of completed concrete beams.



4x12 stringers spaced 9" oc in drive aisle (12' wide aisle rated 30K lbs). Balance is 3x12 spaced 12" oc for pedestrian and small vehicle loads rated at 10K lbs.

Decking boards installed in chevron pattern to denote heavy drive lane; balance of decking installed perpendicular to length of boardwalk. Heavy drive aisle denoted by decking installed. The driving lane is 12' wide; the Boardwalk is 40' wide overall in the commercial district.

Decking material is 2x6 #1 Southern Yellow Pine installed using #14x3" flat head stainless steel wood screws with #3 square drive. See note below.



Re: Decking material evaluation. We debated the use of composites (e.g. Trex, Evergrain), fiberglass reinforced plastics (e.g. ACT, TriMax), black locust and southern yellow pine. After lengthy discussions we selected SYP. The locust quality was not acceptable, availability questionable and the price high. The price of the FRTs was the highest and had a very plastic look even when embossed with woodgrain. Based on a life-cycle analysis it came down to either the composites or the SYP. The consensus was to retain the traditional wood boardwalk and to upgrade to a premium #1 Southern Yellow Pine.



Composite light poles shown — one - piece shroud yet to be installed.



Light poles yet to be installed.



Conduit for 110V and low voltage to feed lights and future security cameras.



Fabricated metal box fastened between joists, flush with decking for mounting light poles on top.

View from underneath boardwalk.