



MAYOR & CITY COUNCIL - Public Hearing
Tuesday, May 19, 2026, 4:00 PM
City Hall, Council Chambers
NOTICE

Page

- A. ANNOUNCEMENTS
- B. CALL TO ORDER & ROLL CALL:
- C. PUBLIC HEARING ITEMS: *All public hearing items to follow the following order.*

- a. *City Briefing (Staff, City Engineer, City Solicitor)*
- b. *Presentation and comments from applicant*
- c. *Public Comments*
- d. *Council comments/questions*

- 1. Public Hearing regarding proposed streetscape designs for the W. Fourth Street & Park Avenue Street Improvement Project. 2 - 9
[2026-05-15 4th Street Renderings](#)
[GMB Presentation - W. Fourth Street & Park Avenue](#)

D. PUBLIC COMMENT:

E. ADJOURNMENT:

Join from PC, Mac, iPad, or Android:

<https://us02web.zoom.us/j/84884188492?pwd=iZZ0B7FOzYk1Bn2wWY24amQOibAfW1.1>

Passcode:529539

+1 301 715 8592 US (Washington DC)

Webinar ID: 848 8418 8492

Passcode: 529539

International numbers available: <https://us02web.zoom.us/j/kesNVSCETHY>

Pursuant to 29 Del. C. § 10004(e)(3) this Agenda is subject to change; including addition or deletion of items or Executive Sessions. Agenda items may not be considered in sequence and therefore, should not be relied upon by any member of the public. To request special accommodations for persons with disabilities please contact the City Hall office at (302) 645-7777, at least 72 hours in advance of a meeting.

The City of Lewes strives to make our public meetings widely available through Zoom and YouTube broadcasts. While the City is committed to continuing this access, pursuant to 29 Del. Code, §10006A, technological failure does not affect the validity of these meetings, nor the validity of any action taken in these meetings.

City Hall is located at 114 E. Third Street Lewes DE

Agenda Posted:05/12/2026 Posted By:ASA



Mayor and City Council Public Hearing – W. Fourth Street and Park Avenue

May 19, 2026



TYPICAL SECTION - 4TH STREET FROM MARKET TO SAVANNAH



Notes:

- Back of sidewalk stays in the same location on the North side of the street
- Back of sidewalk moves 2.5ft back to create a planting strip at the Beebe parking lot
- New Marked 8ft wide parking spaces
- Marked parking spaces same as existing street 8ft wide. Four additional parking spaces are proposed.
- New required ADA parking space at the corner of Market Street and West 4th Street

	<u>EXISTING CONDITION</u>	<u>PROPOSED CONDITION</u>
Travel Lanes	12 feet	11 feet
Sidewalk	4.5 - 5 feet	5 feet
Parking (marked)	15	17

TYPICAL SECTION - 4TH STREET FROM PARK TO MARKET OPTION 1

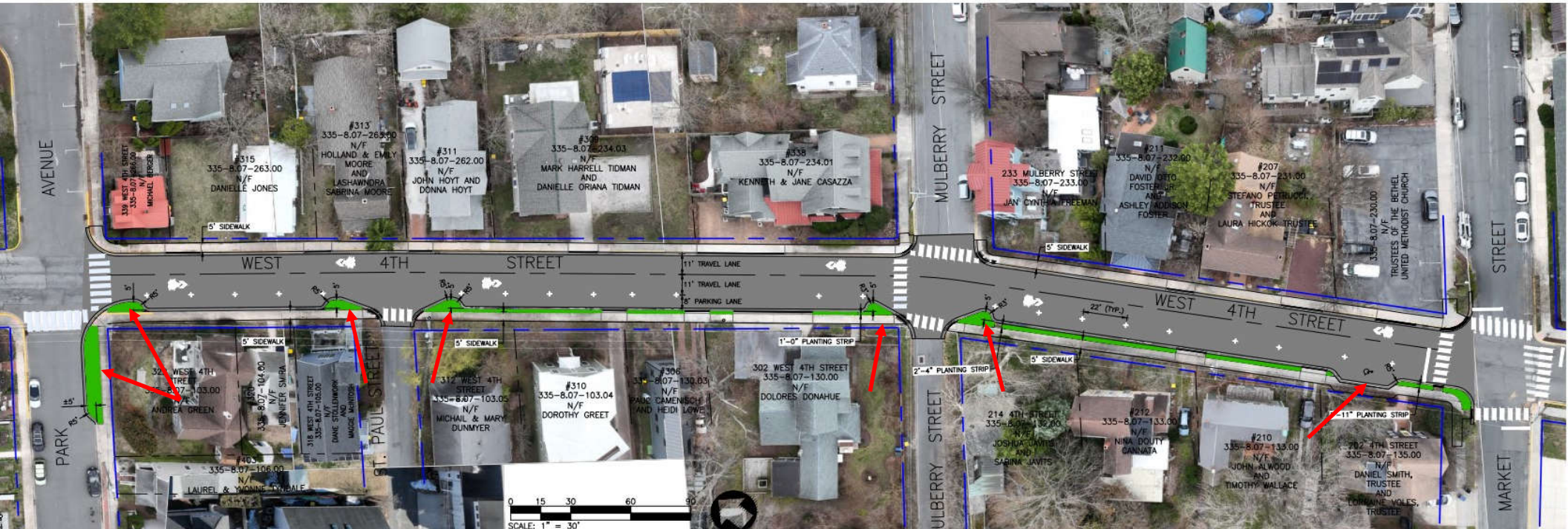


Notes:

- Back of sidewalk stays in the same location both sides of street
- New Marked 8ft wide parking spaces
- New required ADA parking space at the corner of Market Street and W.4th Street
- Proposed Bump Out at the West 4th Street Park Avenue intersection

	<u>EXISTING CONDITION</u>	<u>PROPOSED CONDITION</u>
Travel Lanes	12 feet	11 feet
Sidewalk	4.25 - 5 feet	5 feet
Parking (marked)	N/A	15

TYPICAL SECTION - 4TH STREET FROM PARK TO MARKET OPTION 2

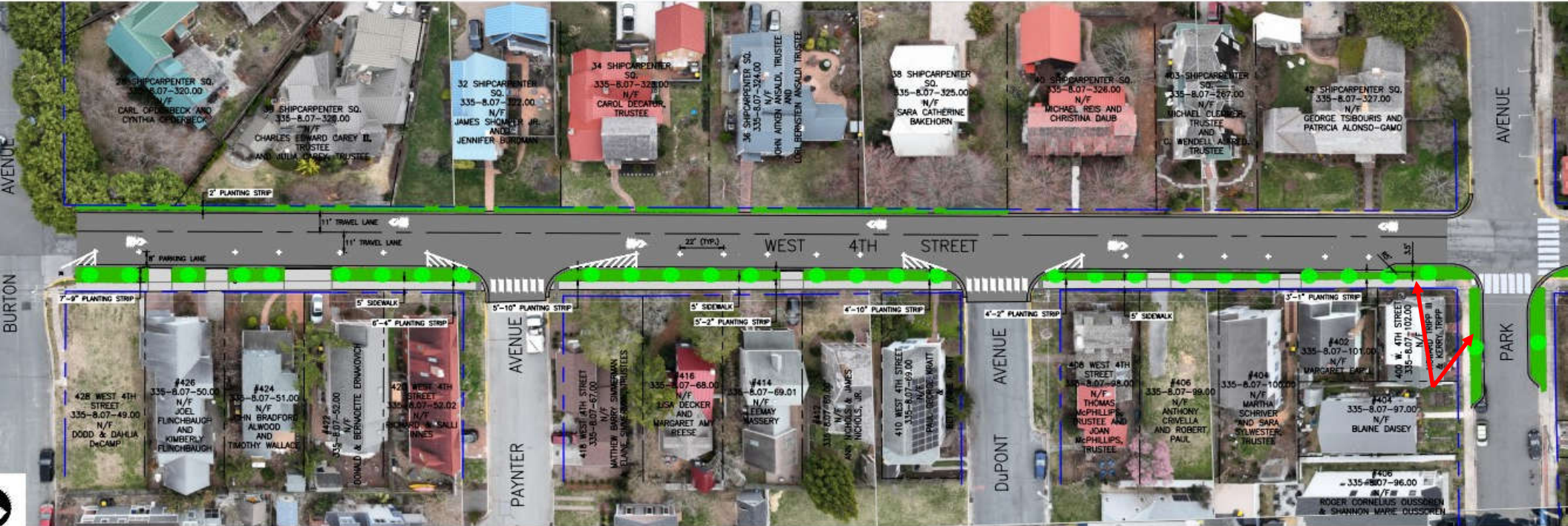


Notes:

- Back of sidewalk stays in the same location both sides of street
- New Marked 8ft wide parking spaces
- New required ADA parking space at the corner of Market Street and W.4th Street
- Proposed Bump Outs at West 4th Street intersections with Park Ave, St. Paul Street and Mulberry Street

	<u>EXISTING CONDITION</u>	<u>PROPOSED CONDITION</u>
Travel Lanes	12 feet	11 feet
Sidewalk	4.25 - 5 feet	5 feet
Parking (marked)	N/A	15

TYPICAL SECTION - 4TH STREET FROM BURTON TO PARK OPTION 1

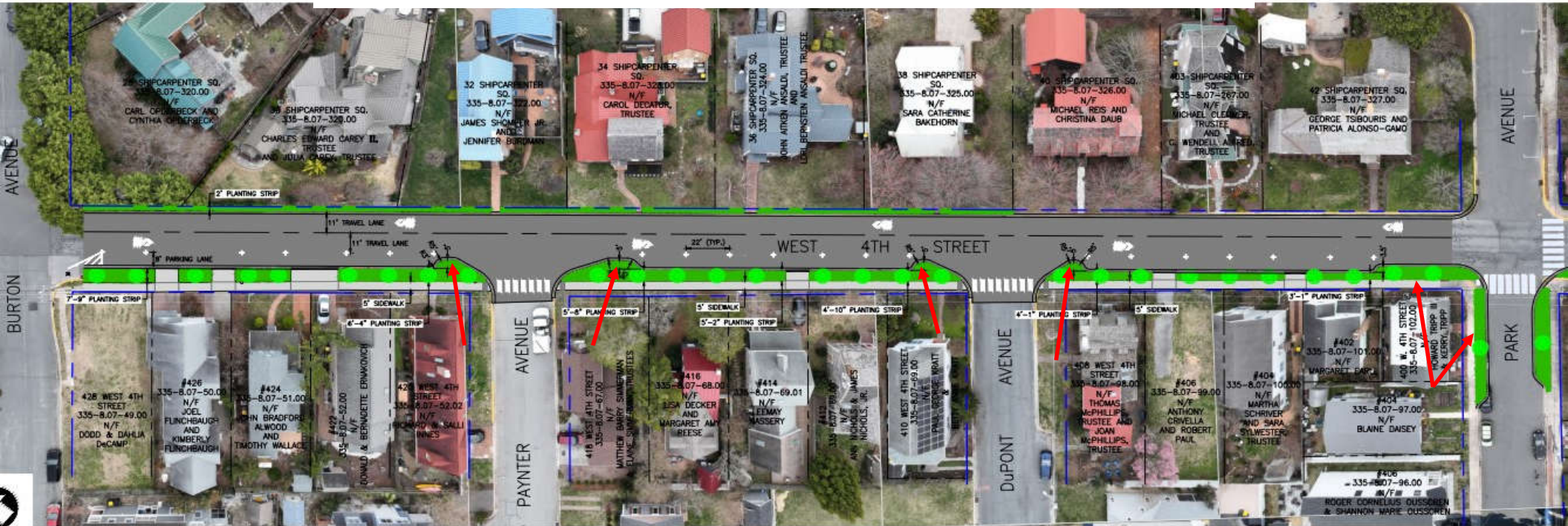


Notes:

- Back of sidewalk stays in the same location
- No sidewalk on the north side of the street
- New Marked 8ft wide parking spaces
- Proposed Bump Out at West 4th Street and Park Avenue intersection

	<u>EXISTING CONDITION</u>	<u>PROPOSED CONDITION</u>
Travel Lanes	12 feet	11 feet
Sidewalk	4 - 5 feet	5 feet
Parking (marked)	N/A	13

TYPICAL SECTION - 4TH STREET FROM BURTON TO PARK OPTION 2



Notes:

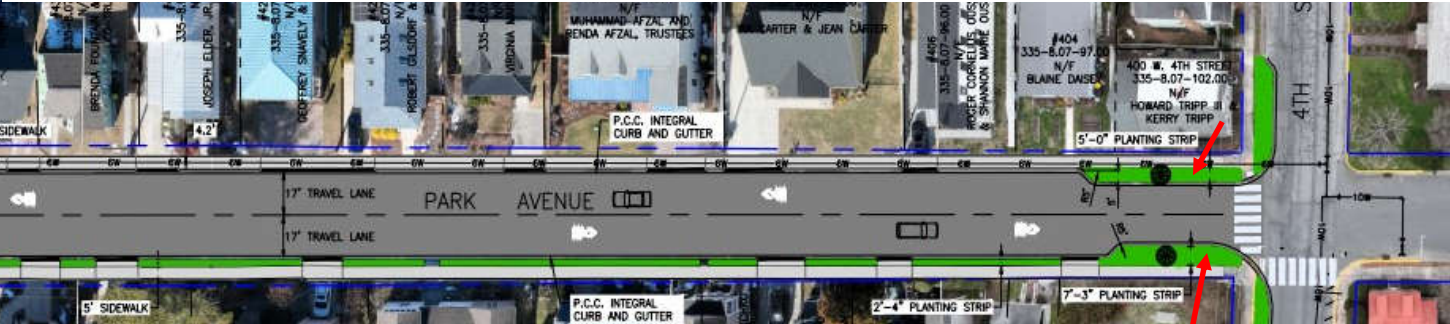
- Back of sidewalk stays in the same location
- No sidewalk on the north side of the street
- New Marked 8ft wide parking spaces
- Proposed Bump Outs at West 4th Street intersections with Paynter, Dupont, and Park Avenue

	<u>EXISTING CONDITION</u>	<u>PROPOSED CONDITION</u>
Travel Lanes	12 feet	11 feet
Sidewalk	4 - 5 feet	5 feet
Parking (marked)	N/A	13

TYPICAL SECTION - PARK AVENUE, OPTION 1



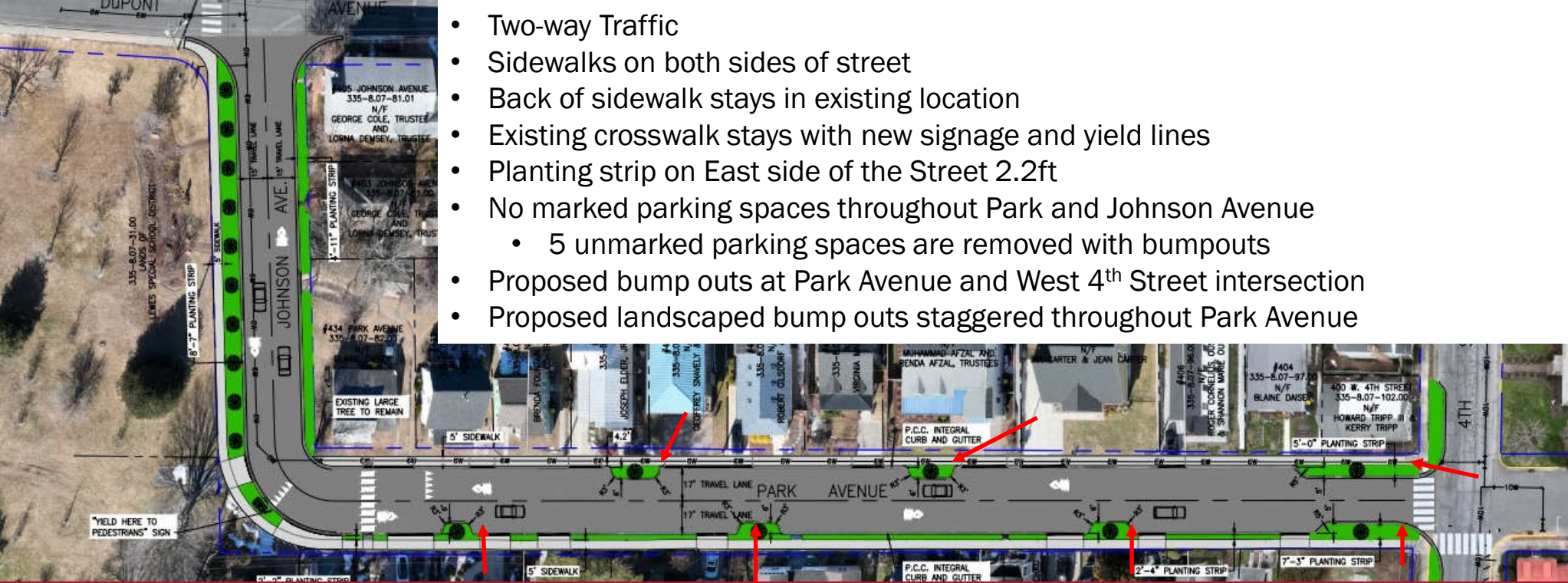
- Two-way Traffic
- Sidewalks on both sides of street
- Back of sidewalk stays in existing location
- Existing crosswalk stays with new signage and yield lines
- Planting strip on East side of the Street 2.2ft
- No marked parking spaces throughout Park and Johnson Avenue
- Proposed bump outs at Park Avenue and West 4th Street intersection



	<u>EXISTING CONDITION</u>	<u>PROPOSED CONDITION</u>
Travel Lanes	16 feet	17 feet
Sidewalk	4.25 - 5 feet	5 feet

TYPICAL SECTION - PARK AVENUE, OPTION 2

- Two-way Traffic
- Sidewalks on both sides of street
- Back of sidewalk stays in existing location
- Existing crosswalk stays with new signage and yield lines
- Planting strip on East side of the Street 2.2ft
- No marked parking spaces throughout Park and Johnson Avenue
 - 5 unmarked parking spaces are removed with bumpouts
- Proposed bump outs at Park Avenue and West 4th Street intersection
- Proposed landscaped bump outs staggered throughout Park Avenue



	<u>EXISTING CONDITION</u>	<u>PROPOSED CONDITION</u>
Travel Lanes	16 feet	17 feet
Sidewalk	4.25 - 5 feet	5 feet