



**PUBLIC INFORMATIONAL WORKSHOP
BURTON NEIGHBORHOOD INFRASTRUCTURE PROJECT
Tuesday, April 7, 2026, 4:00 PM - 6:00 PM
Bonnie Osler Meeting Room
PUBLIC NOTICE**

	Page
A. PRESENTATION OF THE STREETScape DESIGN OPTIONS FOR THE FOURTH STREET AND PARK AVENUE IMPROVEMENT PROJECT <i>Review of design options by Staff & Engineers (Design options will be attached prior to the workshop)</i>	
1. Burton Neighborhood Infrastructure Project Exhibits	3 - 8
B. PUBLIC COMMENTS	
C. PUBLIC REVIEW AND FEEDBACK PERIOD https://us02web.zoom.us/j/85332777249?pwd=bR5ejc3TUlnLAX1p855NydsGn9ZF2j.1	

Join via audio:

+1 301 715 8592 US (Washington DC)

Webinar ID: 853 3277 7249

Passcode: 978790

Pursuant to 29 Del. C. § 10004(e)(3) this Agenda is subject to change; including addition or deletion of items or Executive Sessions. Agenda items may not be considered in sequence and therefore, should not be relied upon by any member of the public. To request special accommodations for persons with disabilities please contact the City Hall office at (302) 645-7777, at least 72 hours in advance of a meeting.

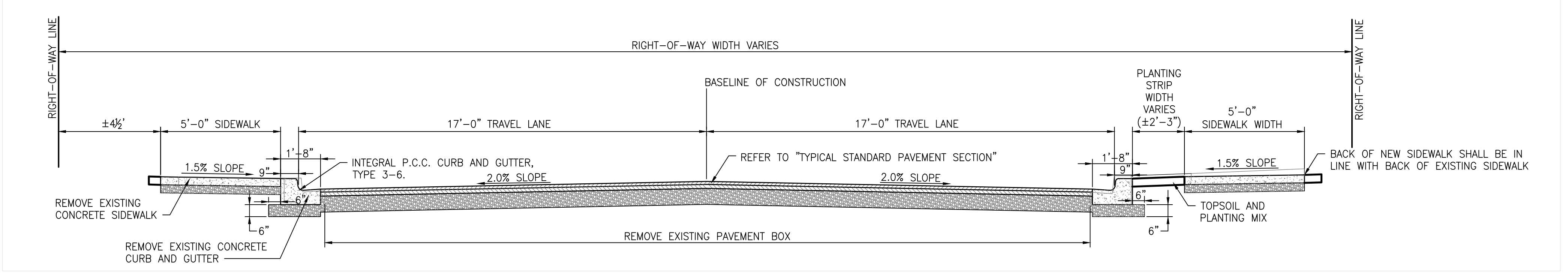
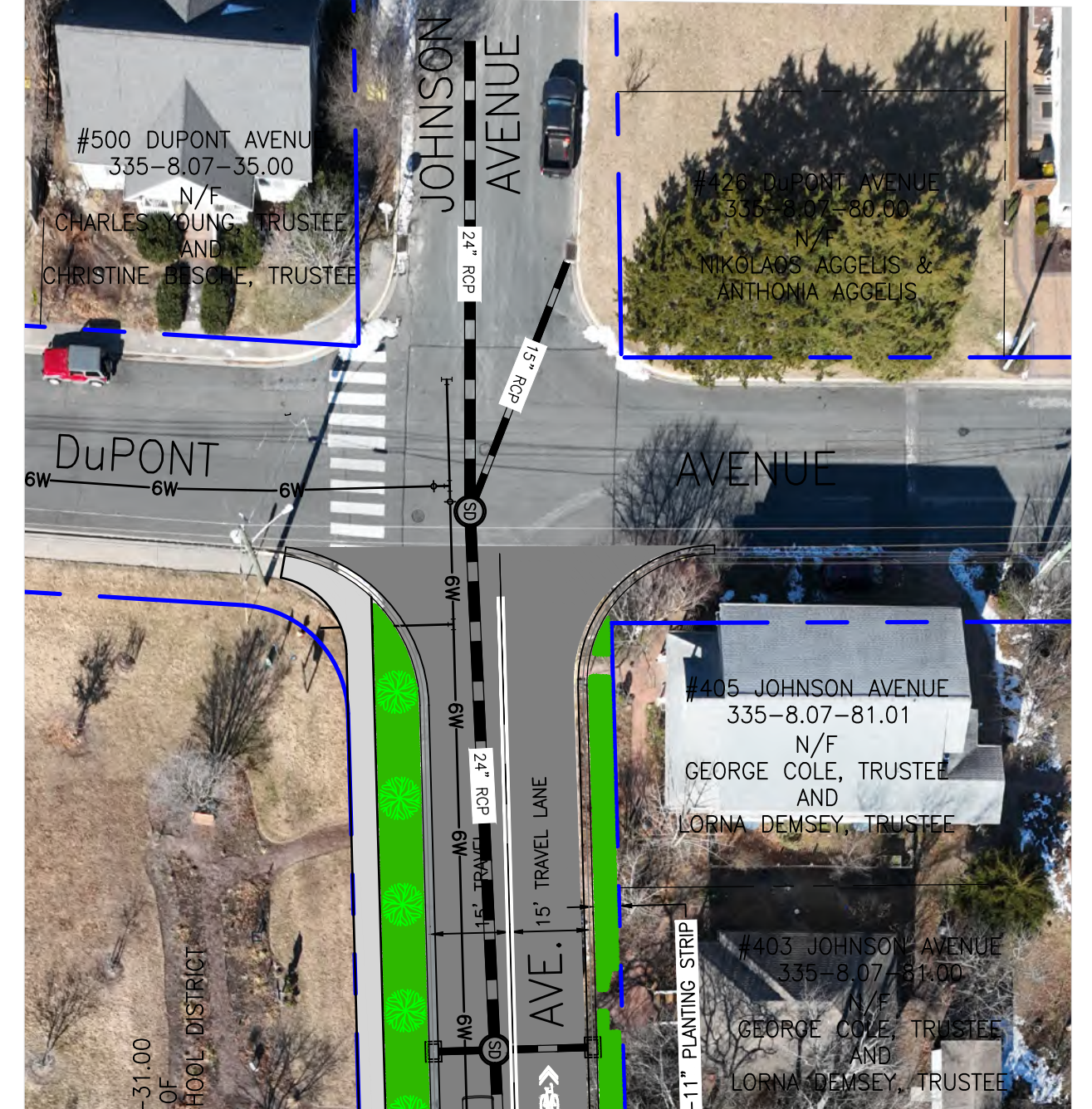
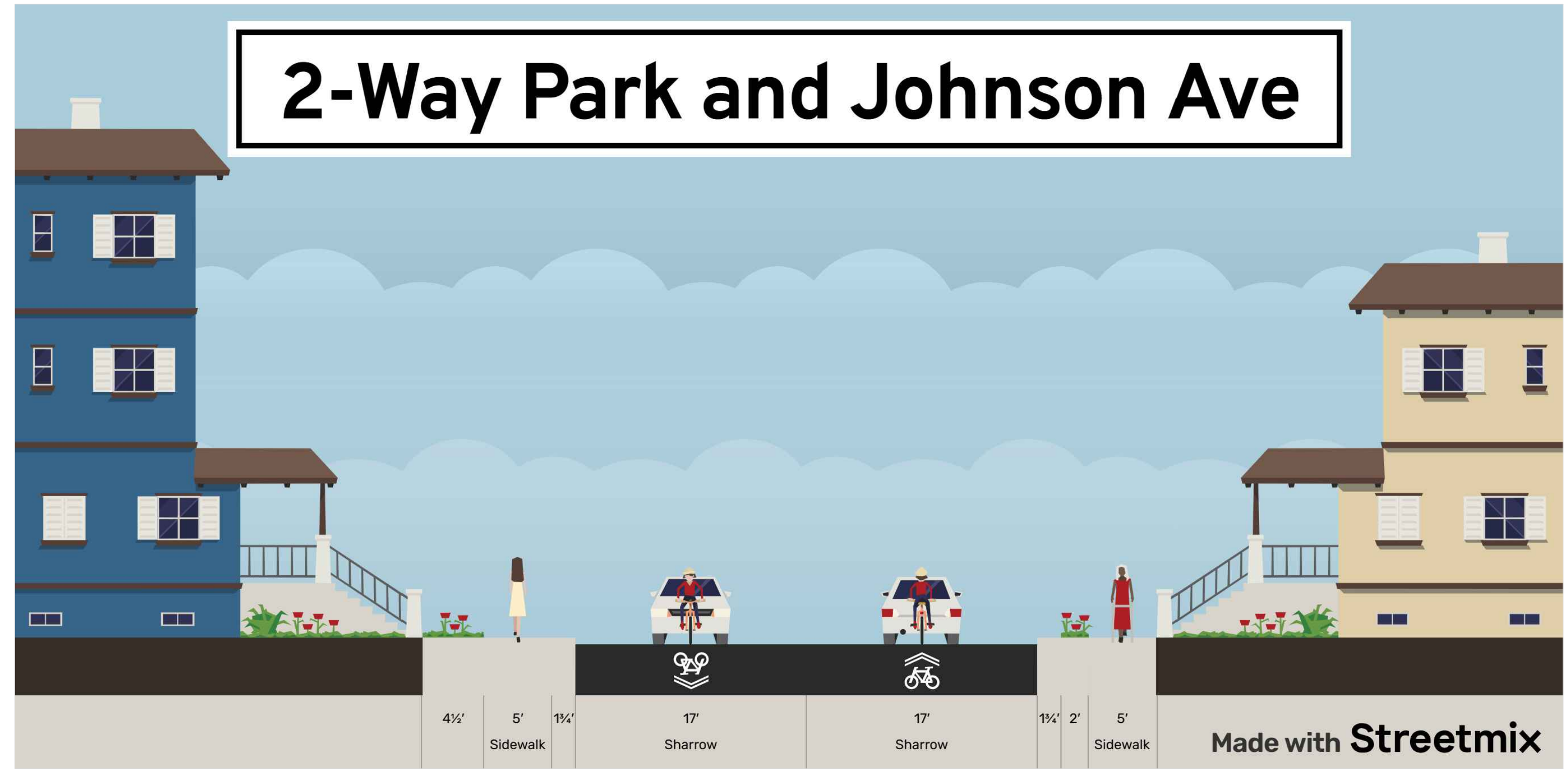
The City of Lewes strives to make our public meetings widely available through Zoom and YouTube broadcasts. While the City is committed to continuing this access, pursuant to 29 Del. Code, §10006A, technological failure does not affect the validity of these meetings, nor the validity of any action taken in these meetings.

The Bonnie Osler Meeting Room is located at 101 Adams Avenue, Lewes DE

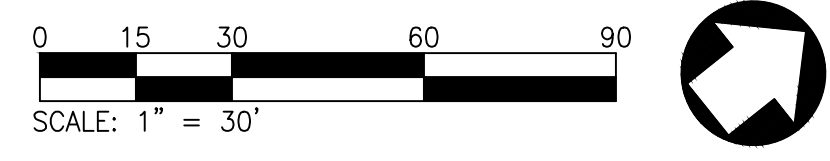
Agenda Posted: 03/31/2026 Posted By:ASA

I:\Projects\2025\250002 8th-4th Street Water-Sewer Improvements\Drawings\Exhibits\Aerial Street Section Exhibits\2025-04-07 Meeting\2-Way - Proposed Site 250002.dwg, 3/31/2025 2:47 PM, John W. King
 PLOT DATE: 3/31/2025 2:47 PM
 PLOT SCALE: 1" = 30'
 PLOT SIZE: 24" x 36"
 PLOT ORIGIN: 0,0
 PLOT UNIT: INCHES
 PLOT DIMENSIONS: 24" x 36"
 PLOT AREA: 864.00
 PLOT PERIMETER: 180.00
 PLOT WEIGHT: 1.00 MB
 PLOT TYPE: PDF
 PLOT STATUS: OK
 PLOT MESSAGE:

2-Way Park and Johnson Ave



TYPICAL PARK AVENUE SECTION, CONCEPT 2



SCHEMATIC PLANS PRINTS ISSUED FOR: REVIEW	
DATE	
REVISIONS	
NO.	

GMB

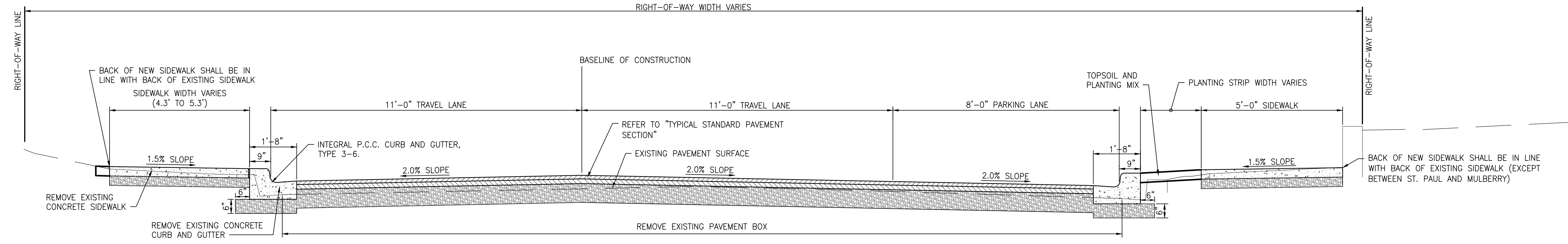
GEORGE, MILES & BUHR, LLC
 ARCHITECTS & ENGINEERS
 SAUSBURRY • BALTIMORE • SEAFORD
www.gmbnet.com

**4TH STREET
AND PARK AVENUE
AND PARK AVENUE
SANITARY SEWER, WATER, AND
ROADWAY IMPROVEMENTS**
 CITY OF LEWES
 SUSSEX COUNTY, DELAWARE

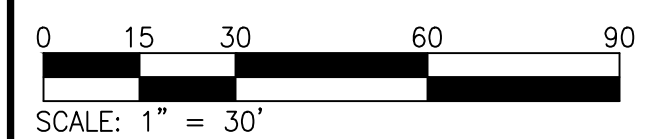
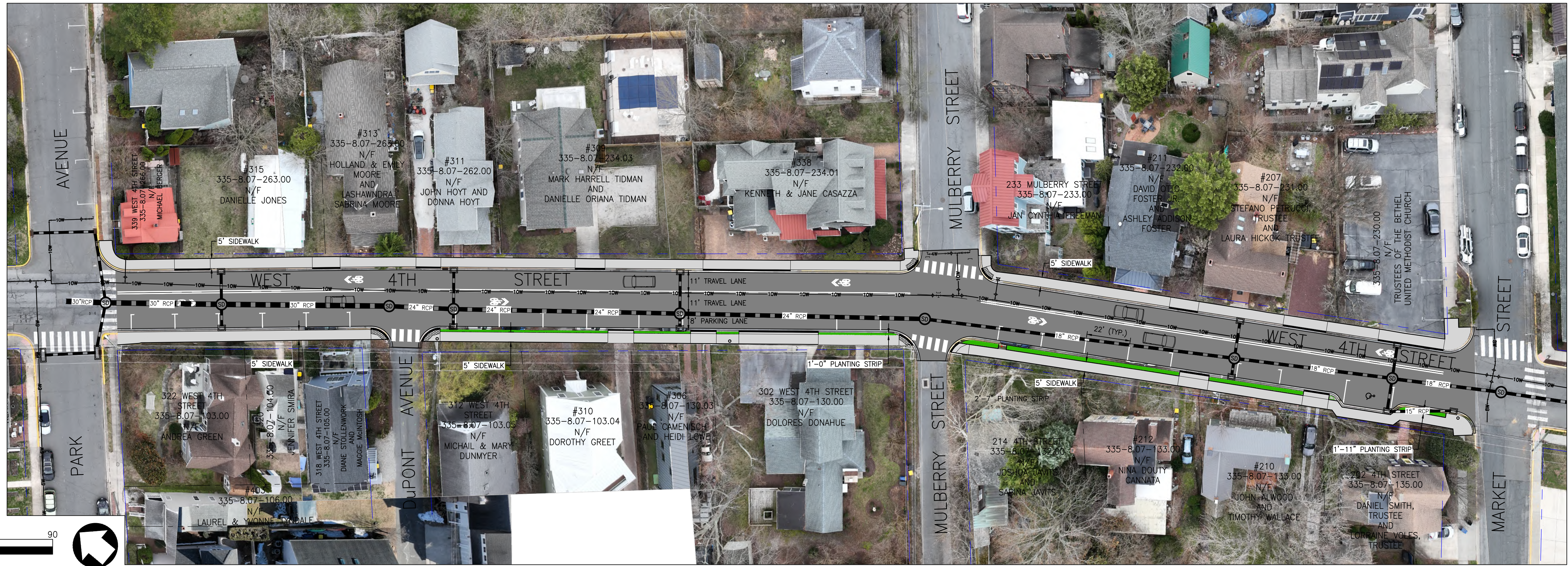
**PARK AND
JOHNSON
AVENUES -
CONCEPT 2**

SCALE: 1" = 30'	SHEET NO.
DESIGN BY: JSL/JWK	C-2
DRAWN BY: JSL/JWK	
CHECKED BY: AJL	
GMB FILE: 250002	
DATE: APRIL 2026	

Park Ave to Market Street



TYPICAL 4TH STREET FROM PARK TO MARKET SECTION



H:\Projects\2025\250002_BPW-4th_Street_Water-Sewer_Improvements\Drawings\Exhibit\2025-04-07_Meeting\C-5_Park to MK_Concept - Proposed Site 250002.dwg, 4/7/2026 8:48 AM, Jacob S. Lathour
 PLOT CODE: PFM-WHT, PFM-BLU, PFM-GRN, PFM-YEL, PFM-RED, 1/8" INCHES (1.00mm), 1/4" INCHES (3.00mm), 1/2" INCHES (12.00mm), 3/4" INCHES (19.00mm), 1" INCHES (25.00mm), 2" INCHES (50.00mm), 4" INCHES (100.00mm), 8" INCHES (200.00mm), 16" INCHES (400.00mm), 32" INCHES (800.00mm), 64" INCHES (1600.00mm), 128" INCHES (3200.00mm)

SCHEMATIC PLANS PRINTS ISSUED FOR: REVIEW	
DATE	
REVISIONS	
NO.	


GMB
 GEORGE, MILES & BUHR, LLC
 ARCHITECTS & ENGINEERS
 SAUSURY - BALTIMORE - SEAFORD
 www.gmbnet.com

**4TH STREET
 AND PARK AVENUE
 SANITARY SEWER, WATER, AND
 ROADWAY IMPROVEMENTS**
 CITY OF LEWES
 SUSSEX COUNTY, DELAWARE

**4TH STREET
 FROM PARK TO
 MARKET STREET
 CONCEPT**

SCALE: 1" = 30'	SHEET NO.
DESIGN BY: JSL_WK	C-5
DRAWN BY: JSL_WK	
CHECKED BY: AIL	
GMB FILE: 250002	
DATE: APRIL 2026	

