



**LEWES BICYCLE & PEDESTRIAN ADVISORY
COMMITTEE**
Tuesday, April 28, 2026, 5:30 PM
Council Chambers, City Hall
Regular Meeting
AGENDA

	Page
A. CALL TO ORDER & ROLL CALL & ANNOUNCEMENTS:	
1. Welcome - Brian Kellman	
B. APPROVAL OF MINUTES	
1. 2026 03 24 Bicycle and Pedestrian Advisory Committee Minutes	3 - 6
C. OLD BUSINESS:	
1. Continued discussion and possible action: Savannah Road parking changes. Savannah Road Proposed Improvements - 2026 04 28 BPAC	7 - 8
D. NEW BUSINESS:	
1. Discussion and possible action: Presentation by Rossi Group, Improvements to Massachusetts Avenue & American Legion Road. TAP Presentation - Rossi Group - 2026 04 28 BPAC Meeting	9 - 23
2. Discussion and possible action: Bicycle & Pedestrian Friendly Map.	
3. Discussion and possible action: Bike Month (May), Bike to Work Day.	
4. Discussion and possible action: DelDOT Bicycle Safety Checkpoints-2026	
5. Discussion and possible action: Maintenance issues related to bicycles and pedestrians. (Status/New)	
E. PUBLIC COMMENT:	
F. SCHEDULE NEXT MEETING	
G. ADJOURNMENT:	

<https://us02web.zoom.us/j/87154017673?pwd=lyuFkqyPxvUGpl9tCGb9UIOPz4gXgQ.1>

Join via audio:

+1 301 715 8592 US (Washington DC)

Webinar ID: 871 5401 7673

Passcode: 664445

Pursuant to 29 Del. C. § 10004(e)(3) this Agenda is subject to change; including addition or deletion of items or Executive Sessions. Agenda items may not be considered in sequence and therefore, should not be relied upon by any member of the public. To request special accommodations for persons with disabilities please contact the City Hall office at (302) 645-7777, at least 72 hours in advance of a meeting.

The City of Lewes strives to make our public meetings widely available through Zoom and YouTube broadcasts. While the City is committed to continuing this access, pursuant to 29 Del. Code, §10006A, technological failure does not affect the validity of these meetings, nor the validity of any action taken in these meetings.

City Hall is located at 114 E. Third Street Lewes DE

Agenda Posted: 04/21/2026 Posted By: ASA

City of Lewes
LEWES BICYCLE & PEDESTRIAN ADVISORY COMMITTEE
Tuesday, March 24, 2026
MINUTES

The Lewes Bicycle & Pedestrian Advisory Committee met on **Tuesday, March 24, 2026 in Council Chambers at Lewes City Hall**, in accordance with proper notification, with the following members present: Chairperson Mary Roth, as well as Committee Members William Carpenter (attending virtually), Thomas Jensen (attending virtually), and Ray Quillen (attending virtually). Also in attendance were Councilmember Khalil Saliba, Parks & Marina Administrator Giulia Kirsch, and Lewes Police Lieutenant Jim Azato.

A. CALL TO ORDER & ROLL CALL & ANNOUNCEMENTS: *Chair Mary Roth called the meeting to order at 5:30 PM, noting they were running a few minutes late while waiting for a quorum.*

1. Welcome - William Carpenter

Chair Roth welcomed Bill Carpenter as a new committee member, noting that while he typically attends meetings in person, he was joining remotely for this first meeting.

2. Bylaws Approved

Chair Roth announced that the committee's updated bylaws were approved by Mayor and City Council at their February 9, 2026 meeting and are now posted on the committee's webpage.

B. APPROVAL OF MINUTES

Chair Roth noted that two sets of minutes were distributed with the agenda - January 20, 2026 and December 16, 2025. She indicated she had no issues with the material content but identified several spelling errors that would be submitted separately. Ray Quillen noted a correction regarding Bill Collick's participation, which Chair Roth clarified was actually Bill Carpenter with an incorrect last name in the minutes.

Motion: *Ray Quillen moved to approve both sets of minutes with the noted corrections. Bill Carpenter seconded. Motion passed unanimously.*

C. OLD BUSINESS:

1. Update, discussion and possible action on improved bicycle and pedestrian access. (1) Forecastle and Captains Circle (2) Gills Neck Road & G-L Trail.

Chair Roth reported that there was no update available as their DelDOT contact is currently on leave. She explained that Forecastle and Captain Circle are the two entrances in Reserve at Pilot Town that connect to New Road, across from Park Road. The committee will receive updates when their DelDOT contact returns and can schedule a visit.

2. Update, Discussion and Possible action on Installation of silent policeman at Monroe & Railroad Avenue.

Lieutenant Jim Azato reported that the Chief Tom Spell has no concerns with placing a more narrow silent policeman in the middle of the roadway at Monroe and Railroad. The challenge is finding one with the proper footprint, as locating them online has proven difficult. Parks and Marina Administrator Giulia Kirsch offered to help with procurement, noting that they need something smaller than the existing silent policemen in the city.

D. NEW BUSINESS:**1. Discussion and possible action: Savannah Road parking changes.**

Lieutenant Azato presented a comprehensive overview of planned changes to Savannah Road, using a map display for visual reference. The plan includes reducing the speed limit from 35 mph to 30 mph starting about one-eighth mile after the dollar store, maintaining 30 mph until reaching a new 20 mph school zone in front of Cape Henlopen High School, then increasing to 25 mph before entering town limits.

Regarding parking changes, DelDOT has approved the Auto Gallery owner's request to eliminate parking on the state-maintained portion of Savannah Road in front of their property. New parking areas will be designated on the right side of the eastbound lane, starting just after the Lewes Brewery exit and continuing past the Army Reserve Center down to Drake Knoll, providing space for approximately 15 unmarked parking spots.

Committee members expressed mixed reactions to the proposal. Committee Member Ray Quillen stated he had "mixed feelings," noting he was unhappy about losing the bike lane but pleased that parking would be eliminated in front of the auto gallery due to visibility concerns for pedestrians and cyclists. He questioned whether other property owners might request similar parking restrictions.

Committee Member Carpenter inquired about signage and communication plans for these significant changes. Lieutenant Azato confirmed that "no parking" signs would be posted where parking is prohibited, and existing "no parking" signs would be removed where parking becomes permitted.

Committee Member Jensen and Committee Member Carpenter both expressed concerns about losing bike lane infrastructure. There was discussion and some confusion about exactly where bike lanes would remain versus where parking would be permitted, leading to questions about the specific layout that would need clarification before any committee action.

Resident Thierry Poirey (19 Harborview Road) emphasized the significance of the decision and suggested it deserved a dedicated public hearing. He noted this issue was already controversial during the Planning Commission's review of Dutchman's Harvest development and suggested either eliminating the bike lane entirely and directing cyclists to the official bike trail, or maintaining it with proper safety measures.

Deputy Mayor Saliba clarified that while the Army Reserve property is planned to be conveyed to the city, they are still awaiting access for environmental studies and do not yet have authority to grant parking access to that property.

Given the complexity and remaining questions about the specific layout of bike lanes versus parking areas, committee members agreed they needed clearer visual presentations before making a recommendation. The item was tabled pending additional information and visual materials for the next meeting.

2. Discussion and possible action: Recommendation to Mayor & Council to remove double bollards at all trail entrances within City limits and replace with single.

Chair Roth explained this item follows up on previous committee discussions and their presentation to Mayor and City Council last fall. The proposal aims to replace existing

double bollards with single, centrally located bollards at trail entrances within city limits to improve consistency, safety, and ADA accessibility.

Motion: Committee Member Carpenter moved to replace all existing double bollard trail entrances within city limits with one centrally located bollard, bringing trail entrances into compliance with current practices, promoting consistency, and improving safety and accessibility for all users. Where a trail entrance is directly aligned with a roadway, the committee recommends evaluating the need for two bollards based on specific site conditions. Committee Member Quillen seconded. Motion passed unanimously.

The committee acknowledged this recommendation has cost implications and agreed to work with city staff to determine estimated costs before the item appears on a Mayor and City Council agenda.

3. Discussion and possible action: Design and Installation of signage on G-L Trail to improve safety.

Chair Roth discussed the committee's previous conversations about wayfinding signage on the Georgetown to Lewes Trail. She expressed interest in developing signage that reflects Lewes' character as a premier destination rather than standard metal signs with arrows. She proposed requesting an RFP for a comprehensive wayfinding plan that would include suggestions for design, placement, points of interest, and mile markers.

Deputy Mayor Saliba noted that the city previously conducted a wayfinding study in 2018 that covered the entire town but excluded the trail. That study resulted in recommendations with costs higher than anticipated, and the plan remains unimplemented.

Committee Member Carpenter suggested involving Art and Bloom to create unique signage representing historic Lewes or the city's flowering character. Chair Roth indicated she would distribute a formal motion electronically after the meeting for consideration at the next meeting, along with exploring potential grant funding opportunities.

4. Discussion and possible action: Lewes250 events.

Chair Roth reported on two preliminary events related to Delaware's 250th anniversary celebrations. The Governor will have a bicycle ride throughout Delaware culminating in Wilmington on July 4th, with discussions about starting the ride in Lewes on July 2nd. Additionally, the American Discovery Trail organization is planning a cross-country journey ending in Lewes on Thanksgiving Day, with participants planning to "tip their bikes" in the Atlantic at Cape Henlopen State Park.

Both events are in early planning stages with limited details confirmed. Chair Roth noted that once dates and logistics are finalized, coordination with Lewes Police will be necessary for permitting and crowd management.

5. Discussion and possible action: Maintenance issues related to bicycles and pedestrians.

Committee Member Quillen raised concerns about a hole on the trail near the city maintenance department on Washington Street that has remained unrepaired for several months. He reported that a neighbor fell into the hole during a storm, breaking her arm and sustaining facial injuries. He requested either repair of the hole or temporary marking with paint to highlight the hazard for trail users.

Committee Member Quillen also reported a bollard at the end of Franklin Street that is not properly seated in its hole, sitting 4-6 inches above ground level, creating a safety hazard that needs to be pounded down or trimmed to fit properly.

Additionally, Committee Member Quillen inquired about construction near the library where stone pathways and borders were installed, apparently for a kiosk or bulletin board. He recalled the committee was supposed to provide input on the location but never received follow-up information.

Ms. Kirsch confirmed she would follow up on the trail hole repair, and Committee Member Carpenter noted he had observed a small sign installed in the library area, though not the bulletin board previously discussed.

E. PUBLIC COMMENT:

Thierry Poirey (19 Harborview Road) discussed the upcoming comprehensive plan update process, noting that Planning Commission chairs are invited to participate in a consultant meeting on April 7th from 10 AM to noon. He emphasized the importance of incorporating bicycle and pedestrian infrastructure goals into the city's comprehensive plan, as state approval of such plans carries significant weight for future grant applications. He recommended the committee develop either their own comprehensive plan to be incorporated into the city's plan or ensure their priorities are directly included in the city's comprehensive plan to maximize future funding opportunities.

Bill Weller (Sussex Cyclists) inquired about coordinating with the city to support the Governor's ride and American Discovery Trail events. Chair Roth agreed to facilitate connections between Sussex Cyclists and the appropriate city contacts, noting that Sussex Cyclists had been mentioned as a potential partner for both events.

F. SCHEDULE NEXT MEETING

G. ADJOURNMENT:

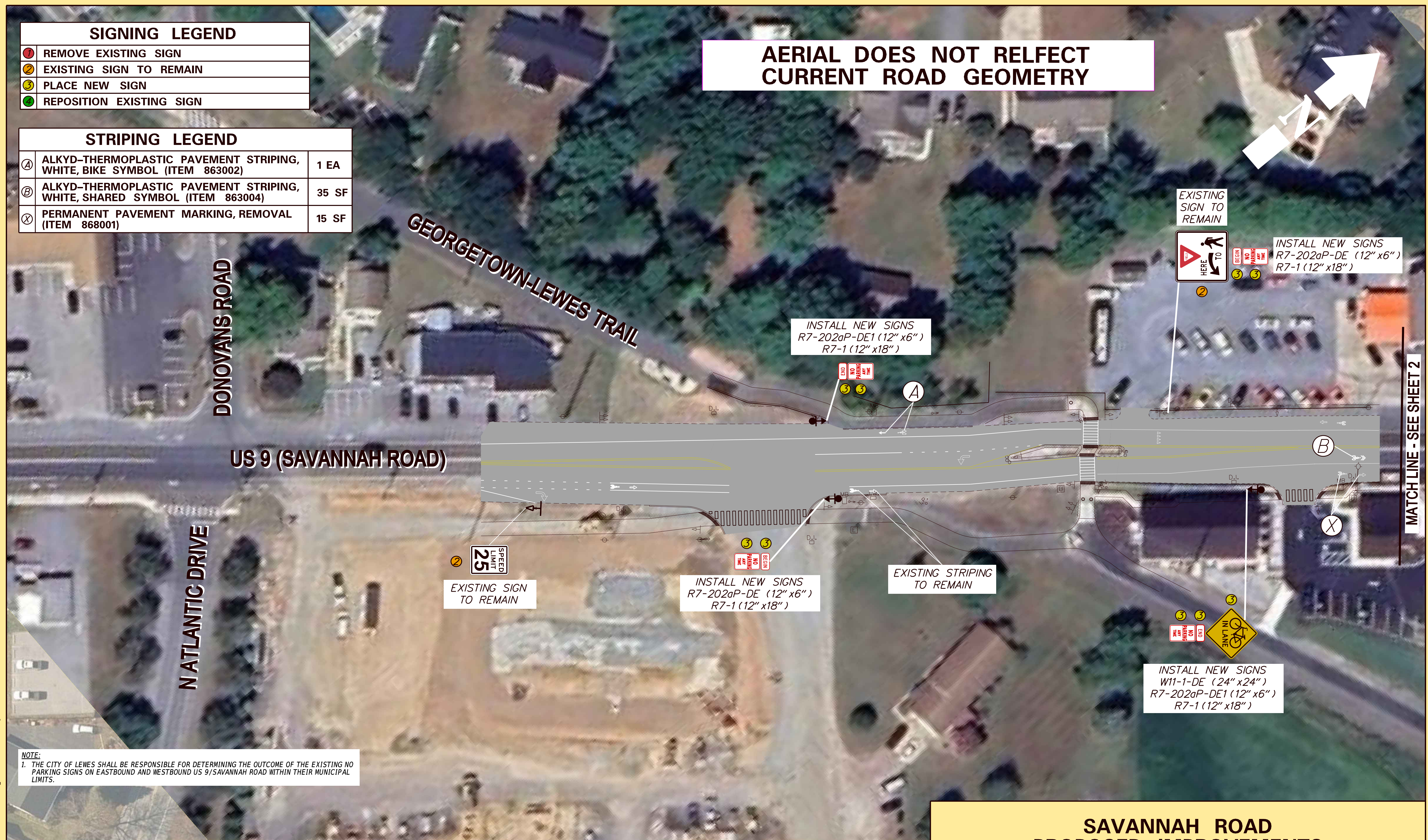
Motion: Committee Member Quillen moved to adjourn. Committee Member Jensen seconded. Motion passed unanimously. The meeting was adjourned at approximately 6:30 PM.

Minutes Submitted By: Jeffery Coover, Administration Support Specialist
 Minutes generated by HeyGov.ai
 Transcripts available upon request.

SIGNING LEGEND	
①	REMOVE EXISTING SIGN
②	EXISTING SIGN TO REMAIN
③	PLACE NEW SIGN
④	REPOSITION EXISTING SIGN

STRIPING LEGEND		
Ⓐ	ALKYD-THERMOPLASTIC PAVEMENT STRIPING, WHITE, BIKE SYMBOL (ITEM 863002)	1 EA
Ⓑ	ALKYD-THERMOPLASTIC PAVEMENT STRIPING, WHITE, SHARED SYMBOL (ITEM 863004)	35 SF
ⓧ	PERMANENT PAVEMENT MARKING, REMOVAL (ITEM 868001)	15 SF

AERIAL DOES NOT REFLECT CURRENT ROAD GEOMETRY



NOTE:
1. THE CITY OF LEWES SHALL BE RESPONSIBLE FOR DETERMINING THE OUTCOME OF THE EXISTING NO PARKING SIGNS ON EASTBOUND AND WESTBOUND US 9/SAVANNAH ROAD WITHIN THEIR MUNICIPAL LIMITS.

SAVANNAH ROAD PROPOSED IMPROVEMENTS				
SCALE 0' 30' 60'	SUSSEX COUNTY	APRIL 2026	DRAWN BY TRD	SHEET 1 OF 2

LEGEND	
	EXISTING SIGN POST
	PROPOSED SIGN POST

LAST REVISED: 9/11/2018
4/8/2026
2:50:37 PM
M:\322264\1\CADD\Savannah_Rd\COMB BOOK - 5507A_Savannah_Rd (1 of 2).dgn



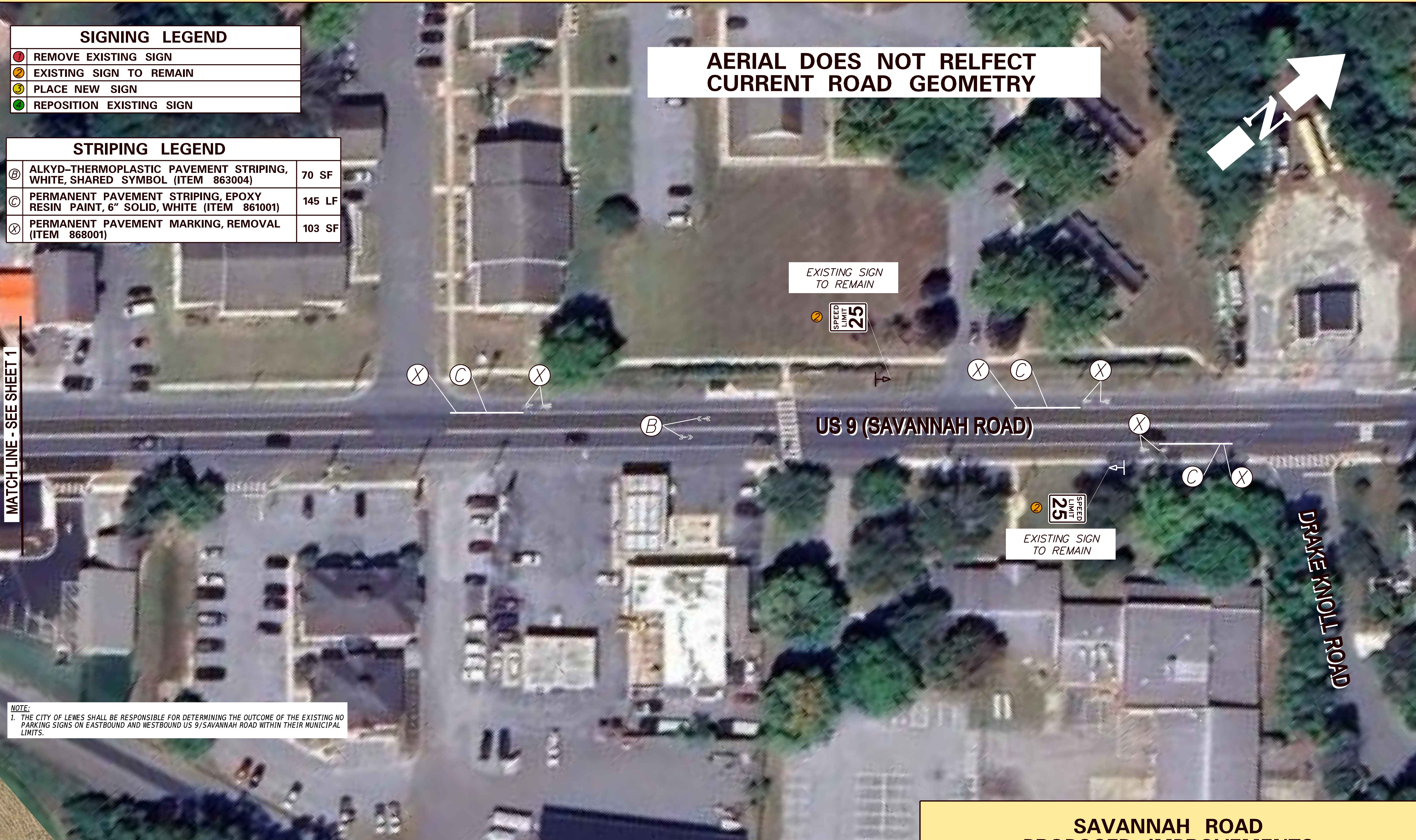
SIGNING LEGEND	
ⓧ	REMOVE EXISTING SIGN
⓪	EXISTING SIGN TO REMAIN
ⓐ	PLACE NEW SIGN
ⓑ	REPOSITION EXISTING SIGN

STRIPING LEGEND		
ⓑ	ALKYD-THERMOPLASTIC PAVEMENT STRIPING, WHITE, SHARED SYMBOL (ITEM 863004)	70 SF
Ⓒ	PERMANENT PAVEMENT STRIPING, EPOXY RESIN PAINT, 6" SOLID, WHITE (ITEM 861001)	145 LF
ⓧ	PERMANENT PAVEMENT MARKING, REMOVAL (ITEM 868001)	103 SF

AERIAL DOES NOT REFLECT CURRENT ROAD GEOMETRY



MATCH LINE - SEE SHEET 1



NOTE:
 1. THE CITY OF LEWES SHALL BE RESPONSIBLE FOR DETERMINING THE OUTCOME OF THE EXISTING NO PARKING SIGNS ON EASTBOUND AND WESTBOUND US 9/SAVANNAH ROAD WITHIN THEIR MUNICIPAL LIMITS.

SAVANNAH ROAD PROPOSED IMPROVEMENTS				
SCALE 0' 30' 60'	SUSSEX COUNTY	APRIL 2026	DRAWN BY TRD	SHEET 2 OF 2

LEGEND	
	EXISTING SIGN POST
	PROPOSED SIGN POST



LAST REVISED: 9/11/2018
 4/22/2026
 2:46:57 PM
 M:\32226-04\1\CADD\Savannah_Rd\COM\BOOK - 5508_Savannah_Rd (2 of 2).dgn



American Legion Road and Massachusetts Avenue Sidewalks





Excellence in Transportation

Every Trip.

We strive to make every trip taken in Delaware safe, reliable and convenient for people and commerce.

Every Mode.

We provide safe choices for travelers in Delaware to access roads, rails, buses, airways, waterways, bike trails and walking paths.

Every Dollar.

We seek the best value for every dollar spent for the benefit of all.

Everyone.

We engage our customers and employees with respect and courtesy as we deliver our services.





SAFETY

2026 Delaware Total Fatalities
as of 04/23/26

	2026		2025			2024		
	Year-to-date		Year-to-Date	Total		Year-to-Date	Total	
Fatalities	28		23 ↑ +22%	117		36 ↓ -22%	130	
Delaware Residents	26		17 ↑ +53%	90		32 ↓ -19%	110	
Person Types								
Vehicle Occupant	17		13 ↑ +31%	67		22 ↓ -23%	65	
Pedestrian	7		8 ↓ -12%	27		9 ↓ -22%	34	
Bicyclist	2		1 ↑ +100%	4		2	0%	5
Motorcyclist	2		0 ↑ +100%	17		2	0%	21
Other Person Type	0		1 ↓ -100%	2		1 ↓ -100%	5	
Crash Types								
Curve Related	4		2 ↑ +100%	15		4	0%	23
Roadway Departure	9		9	0%	50	13 ↓ -31%	42	
Intersection Related	6		5 ↑ +20%	37		11 ↓ -45%	48	
Median Crossover	1		0 ↑ +100%	2		0 ↑ +100%	0	
Wrong Way	0		2 ↓ -100%	4		1 ↓ -100%	4	
Work Zone	1		1	0%	7	2 ↓ -50%	5	



TAP Background

- Funding from FHWA to DelDOT
- Eligible Projects Include
 - Planning & Construction of on off road facilities for bicyclists and pedestrians
 - Safe Routes for non-drivers
 - Planning & Construction of turnouts, overlooks, and viewing areas
 - Safe Routes to Schools Projects
- Lewes applied in 2024
- 20% local match requirement for design and construction

Savannah Road & Massachusetts Avenue – RRFB & Sharrows
 Savannah Road & Massachusetts Avenue / American Legion Road

9

Recommendation: Add a Rectangular Rapid Flashing Beacon (RRFB) to assist people walking and biking to cross Savannah Road and people biking to turn left onto Savannah Road. Add pedestrian pushbuttons at the existing crosswalk. Add bike push buttons that are accessible to on-road bicyclists. Add sharrows on Massachusetts Avenue / American Legion Road to designate the bike route.

Existing Conditions: American Legion Road and Massachusetts Avenue are 25- to 30-foot-wide 2-lane roads with no sidewalks. Savannah Road is a 30-foot-wide 2-lane road with bike lanes and a sidewalk on the southbound side.

LTS: 3 (due to vehicle volumes and speeds)

Connectivity: Connects downtown Lewes and communities to the west with the GLT.



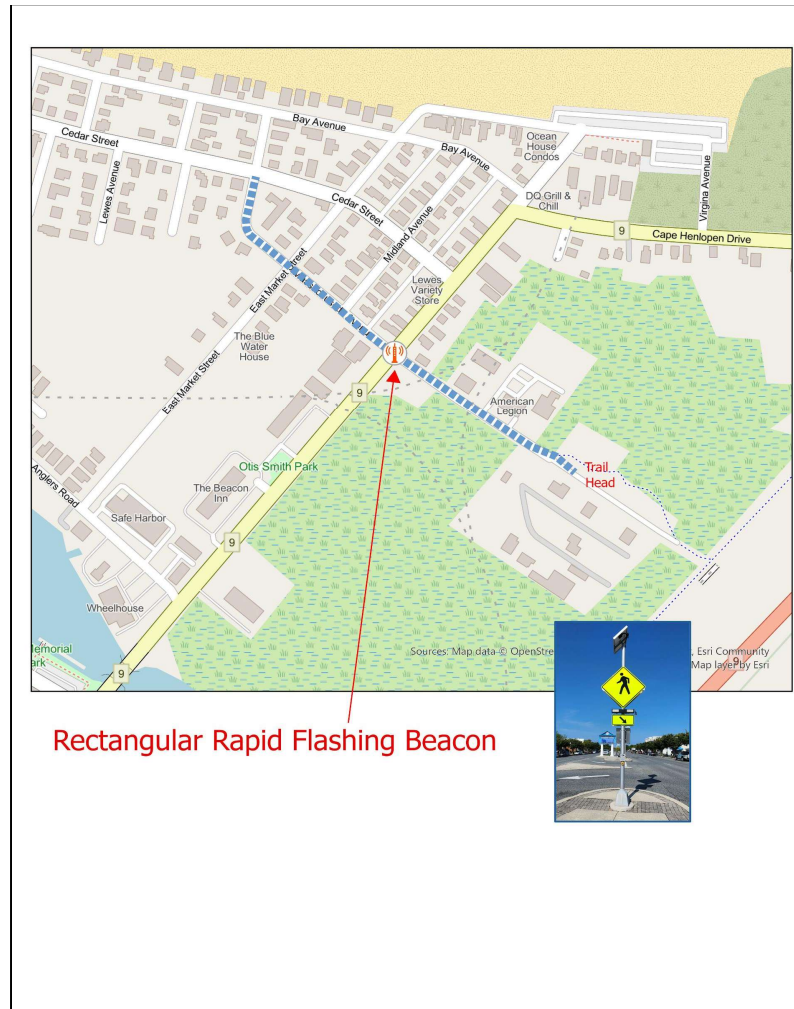
Calculations & Constraints	
Priority	Short-term
Responsible Agencies:	DelDOT/Lewes
Approx. Length:	1,900'
Planning-Level Design & Construction Cost:	\$90,000
Private Property Impacts:	None
Utility/Infrastructure Impacts:	None
Stream Crossings:	None

Note: This recommendation will improve bicycle/pedestrian connectivity between the Bay Avenue bike boulevard, the GLT, and downtown.

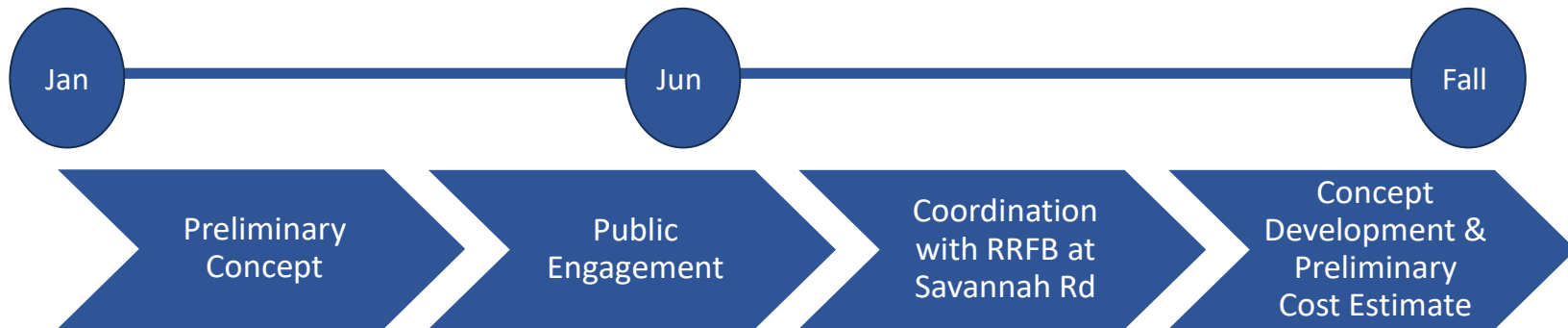


Project Location

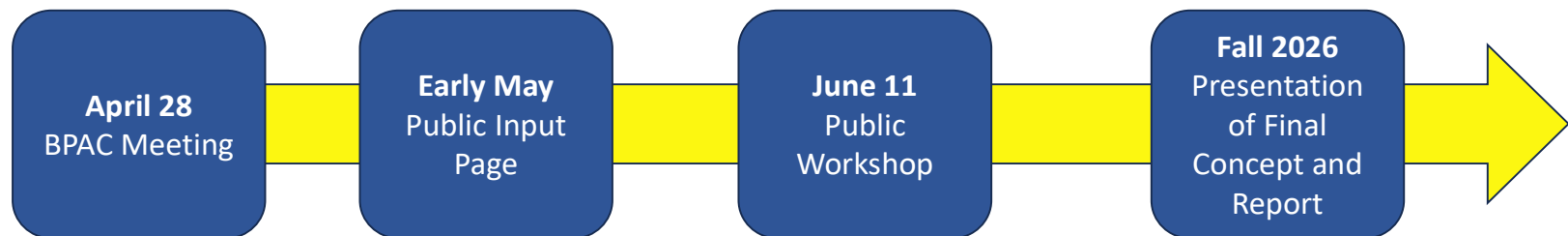
- Sidewalk on both sides of Massachusetts Avenue from Cedar Street to Savannah Road
- RRFB at intersection of Savannah Road and Massachusetts Avenue / American Legion Road
- Sidewalk on north side of American Legion Road



Process and Schedule - 2026



Public Engagement - 2026



Massachusetts Avenue

Cedar Street to Savannah Road

- Crosswalks across Cedar Street.
- 5-foot-wide sidewalk on both sides of Massachusetts Ave.
- Design will ensure that curb and sidewalk do not obstruct drainage.
- May need to remove vegetation.
- Rectangular Rapid Flashing Beacons on Savannah Road.



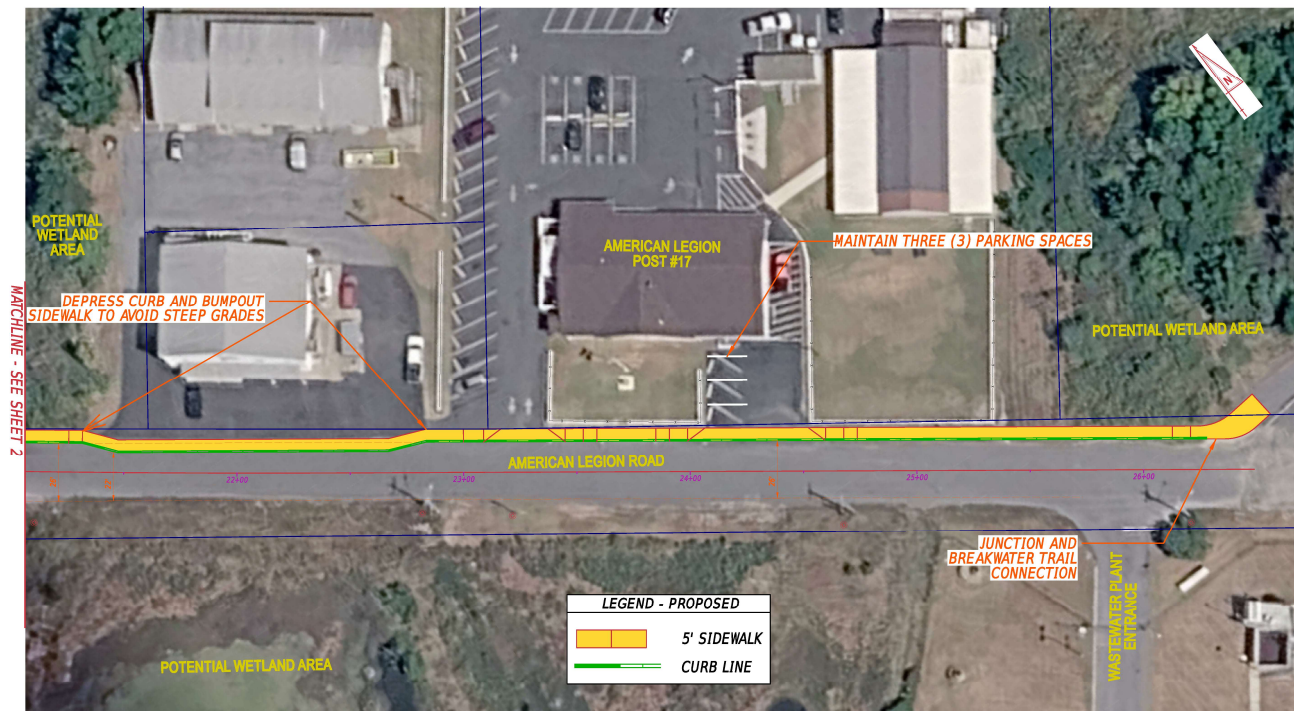
American Legion Road

- 5-foot-wide sidewalk on north (Bay) side of road from Savannah Road to Junction & Breakwater Trail.
- Sidewalk to shift into the roadway in front of Hazzard Electric due to grade issues and parking. Roadway to decrease to 22 feet wide along Hazzard frontage.
- In front of American Legion, parallel parking spaces within roadway to be removed. 3 internal angled parking spaces to be converted to perpendicular.

Preliminary Concepts



Preliminary Concepts



Questions?