



vote

YOUR

Easy ways to vote for the June 2, 2026 Statewide Primary Election:



**BY UNITED STATES
POSTAL SERVICES
(USPS) MAILBOX**



BY BALLOT DROP BOX

San Bruno Locations:

- City Hall | 570 Linden Avenue
- Senior Center | 1555 Crystal Springs Road
- Skyline College | 3300 College Drive



BY VOTE CENTER

San Bruno Locations:

- Recreation & Aquatic Center | 251 City Park Way
- Courtyard by Marriott | 1050 Bayhill Drive

Hours and locations for all San Mateo County Vote Centers, available at www.smcvote.gov or call (650) 312-5222 for more information.

SUNDAY, JUNE 7, 2026

Posy Parade & Community Day

FOOD, FUN & LIVE MUSIC FOR EVERYONE!

11:00am Parade begins
at Crystal Springs Road & Linden Avenue

11:30am-4:00pm Community Day
in San Bruno City Park



PRIDE MONTH JUNE 2026





Proclamation Recognizing Recipient of the
San Bruno Police Department

Distinguished Service Medal

Officer

Daimhin Kirwan

Help is Available

San Bruno Police Department Mental Health Clinician program

- 911 or (650) 616-7100

San Mateo County Mobile Crisis Response Team

- (650) 579-0350

National Suicide and Crisis Line

- 988



**MAY IS
MENTAL HEALTH
AWARENESS MONTH**



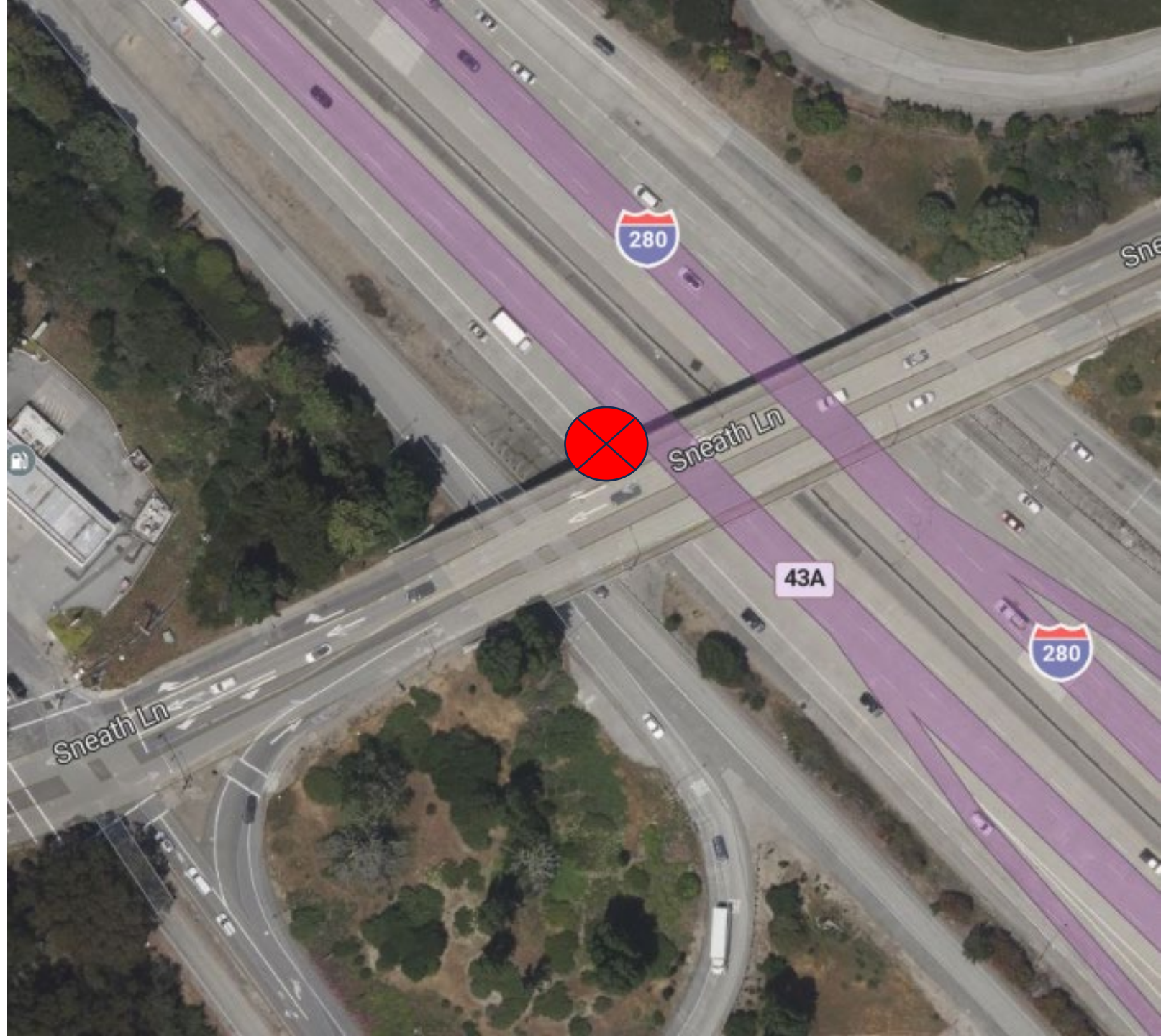
**You are not alone.
Support is here.
HELP IS ALWAYS AVAILABLE.**



Reach out. Talk. There is hope.

April 27, 2026 at 3:30 PM

- Initial report of a woman crying by Sneath Lane and the Hwy 280 overcross
- Upon Officer Kirwan's arrival, the woman steps over the overcross railing and sits down
- As he speaks with her, pleading with her to step back over to the sidewalk and speak with him, she slowly moves to position herself directly over the lanes of traffic for Hwy 280







Distinguished Service Medal



- To be awarded to any Police Department employee
- Who distinguishes him/herself in the performance of such employee's duties **under unusual, complicated, or hazardous conditions** where the employee **used excellent judgment** in accomplishing an assigned mission.
- This may also be awarded to any employee whose actions and training **directly result in saving or preventing the loss of human life.**



Proclamation Recognizing Recipient of the
San Bruno Police Department

Distinguished Service Medal

Officer

Daimhin Kirwan



Update to San Bruno City Council on Recent Accomplishments and Upcoming Efforts

May 26, 2026

Len Materman
Chief Executive Officer

Summer Bundy
Director of Projects

San Mateo County Flood and Sea Level Rise
Resiliency District

Today's Topics:

OneShoreline FY26-27 Priorities

Regional Context

Updates

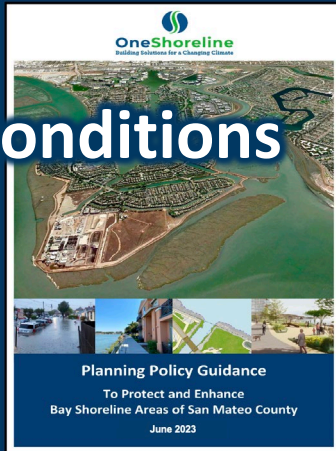
- Community Engagement
- Home Protection & Insurability Initiative
- Maintenance Actions
- Flood Early Warning System
- Resilience Project

OneShoreline 2026-27 Priorities

2. Reduce today's impacts

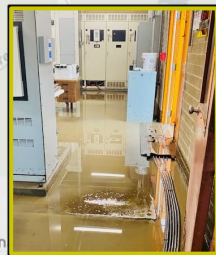


3. Plan for future conditions



OneShoreline.org/Planning-Guidance

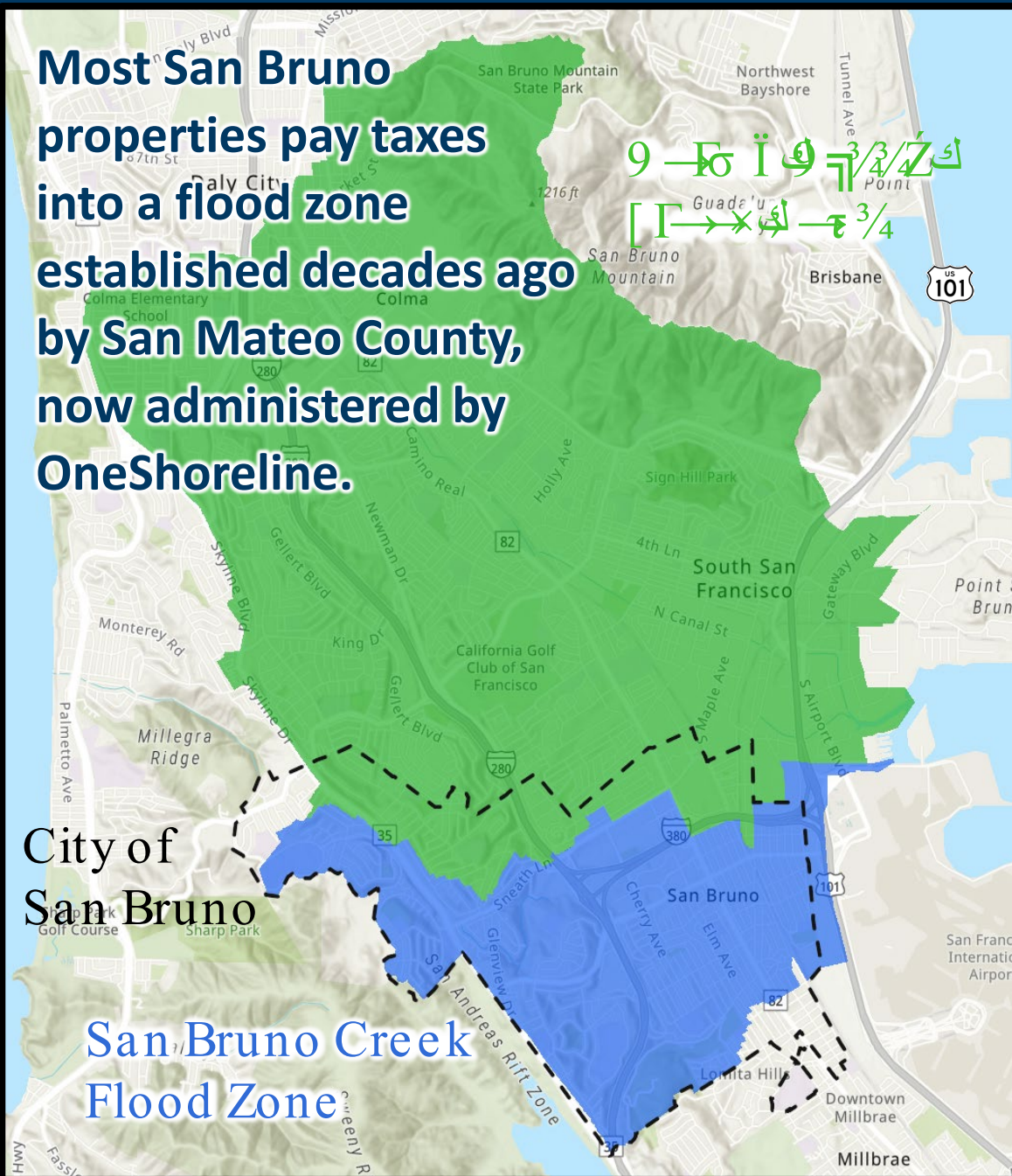
4. Secure long-term funding



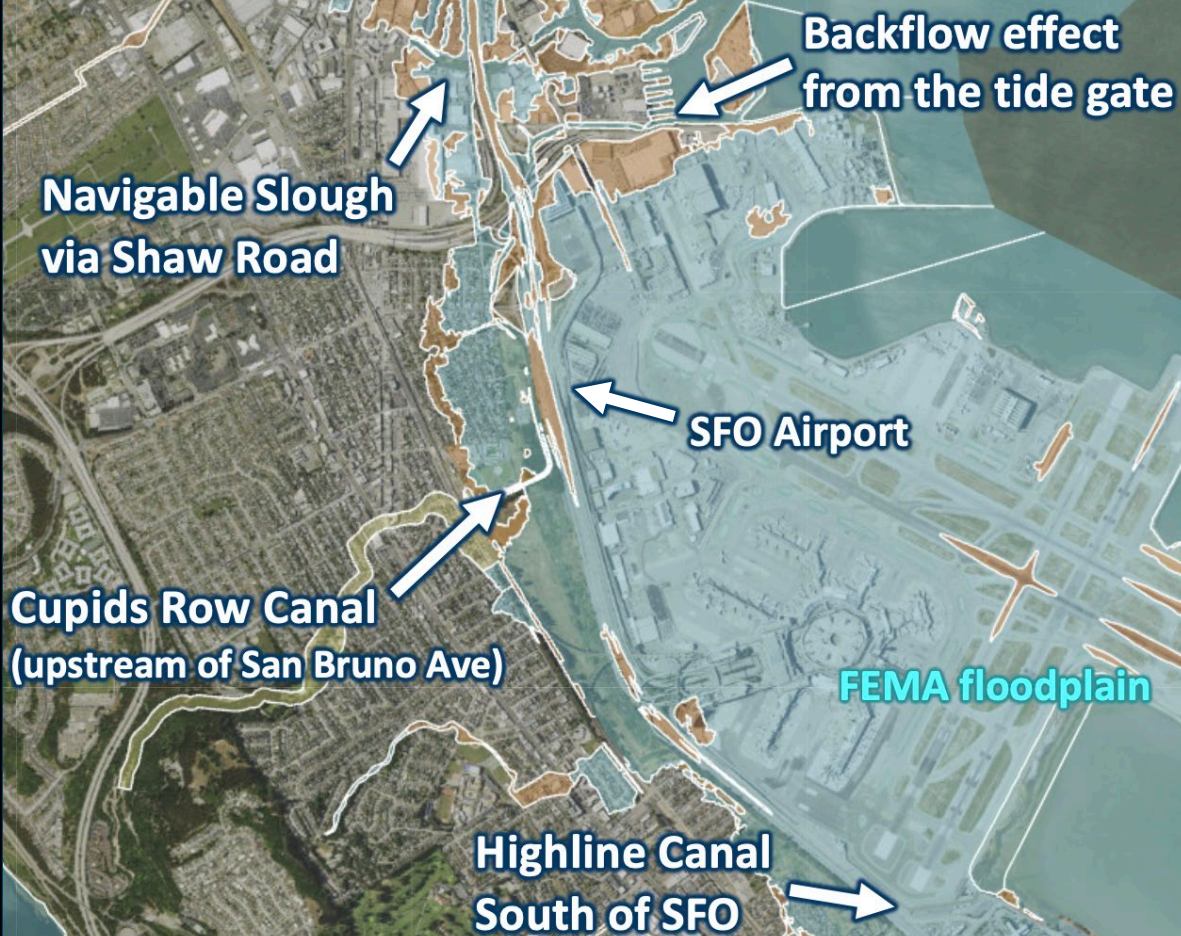
Most San Bruno properties pay taxes into a flood zone established decades ago by San Mateo County, now administered by OneShoreline.

City of San Bruno

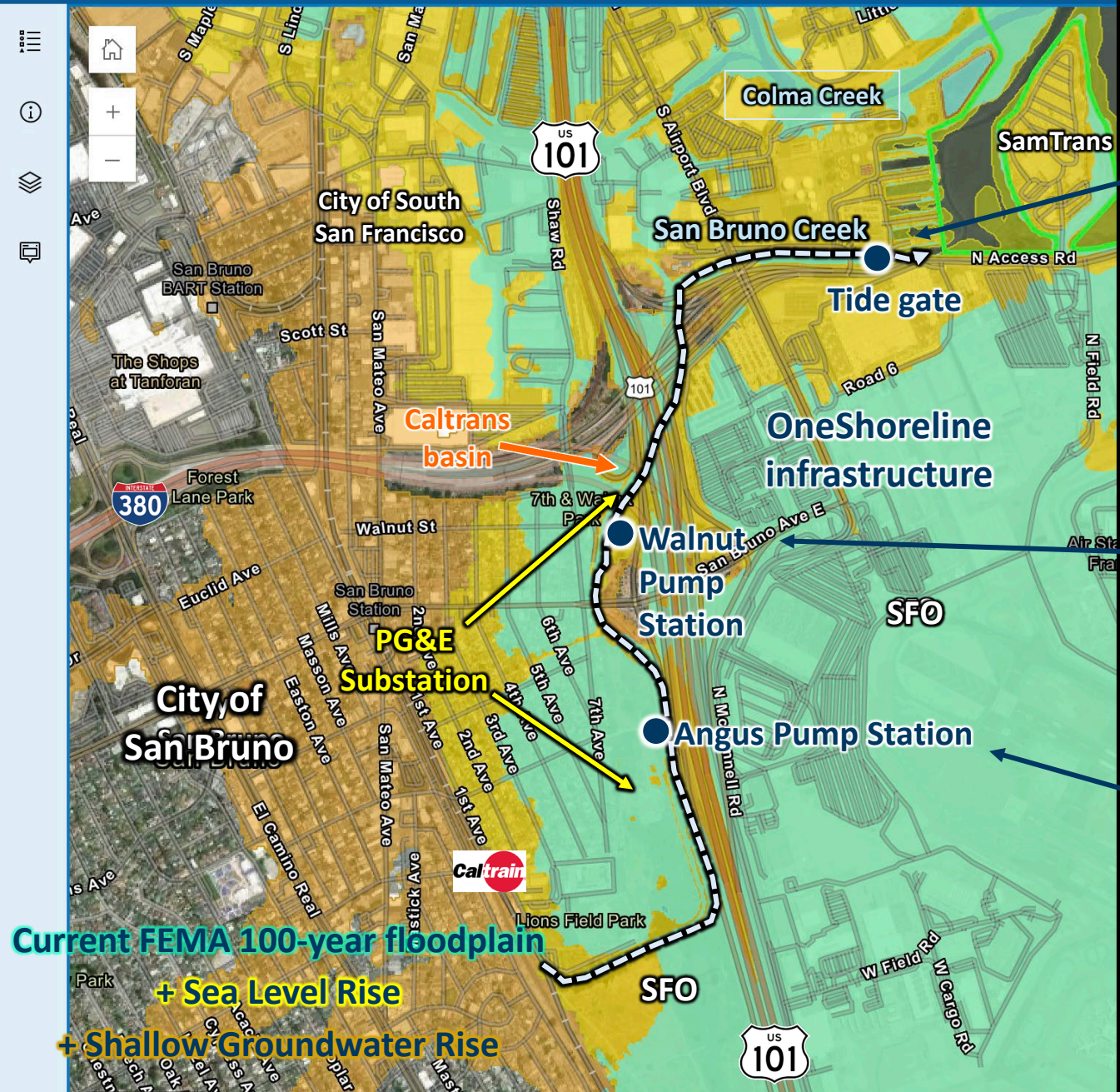
San Bruno Creek Flood Zone



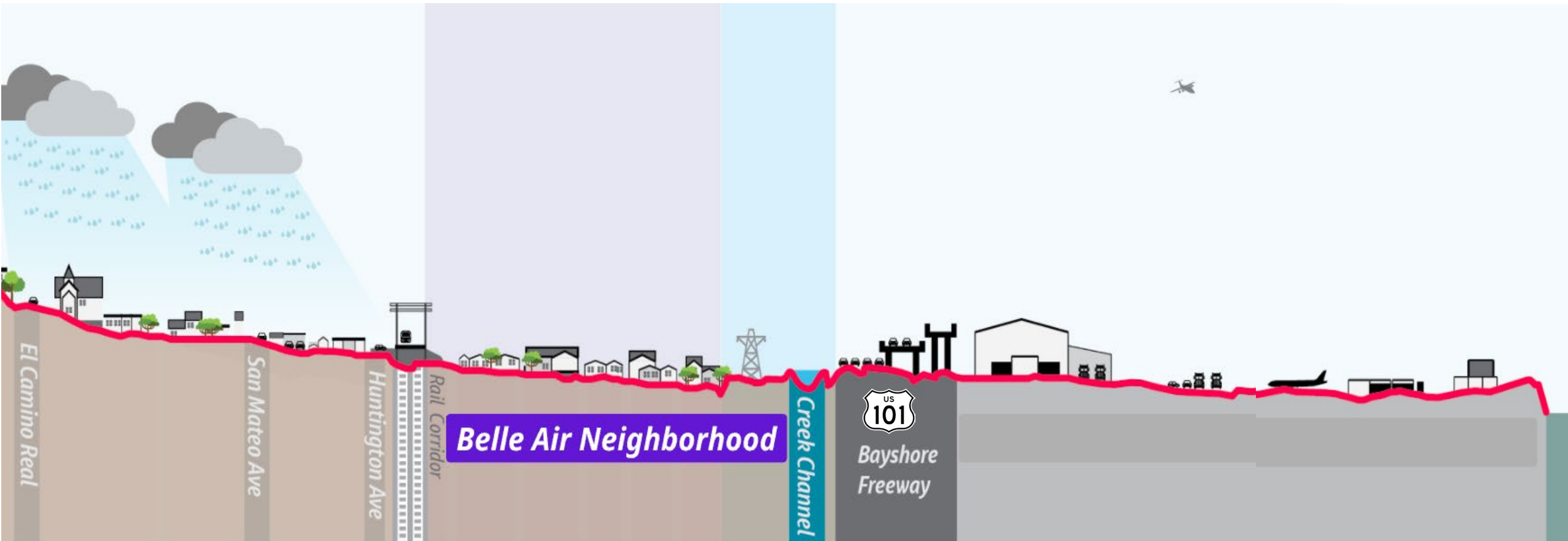
Current modeled flooding sources, which will increase with more extreme storms and sea level rise.



OneShoreline Bayside Map of Future Conditions



Belle Air is vulnerable to flooding due to its reliance on aged infrastructure designed for historic conditions and its low-lying elevation close to the Bay.



Partnership is Required

- When OneShoreline was established on January 1, 2020, it inherited the assets and liabilities of the San Bruno Creek Flood Zone established by San Mateo County in the 1960's.
- At that time, the San Bruno Creek Flood Zone's financial assets totaled \$2,993,142.
- The non-financial "assets" included a 1948 tide gate and two 1967 pump stations that require frequent maintenance and must be replaced to meet this moment.
- A stormdrain system collects rainwater from developed areas and sends it – frequently with the help of pump stations – safely into creeks and then to the Bay or ocean.
- The cost to build new pump stations to adequately protect San Bruno far exceeds the current San Bruno Creek Flood Zone fund balance of \$4,072,932.
- Protecting San Bruno against increasing flood risk requires a pooling of resources among OneShoreline, the City of San Bruno, and external funders (like OneShoreline's FEMA grant).

Community Engagement Overview



- Door-to-door outreach
- Community leads
- Community workshop



- Door-to-door outreach
- One Watershed community vulnerability assessment
- Community Leads
- Household Flood Supplies



- Door-to-door outreach
- Community leads
- Community advisory group
- Community workshops

OneShoreline's Home Protection and Insurability Initiative (HPII)

Links two OneShoreline resilience priorities:

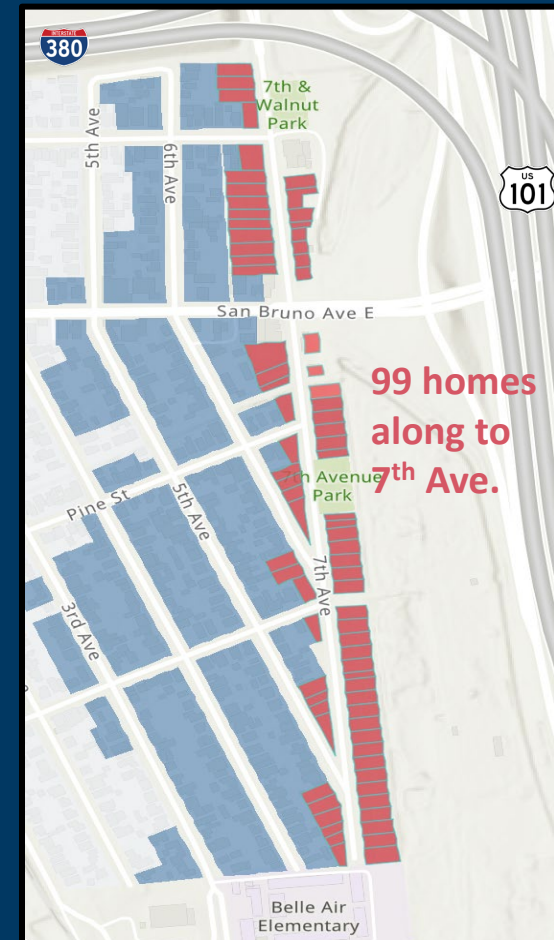
- Reduce climate risks to communities and individual homes
- Protecting life and property improves access to affordable insurance, which builds economic resilience.

Connected challenges in San Mateo County:

- Homeowners paid 55% more for insurance in 2024 (~\$1,800) than in 2018; homes with flood insurance paid an additional ~\$1,200/year.
- Increasing climate risks strain private insurance markets and family budgets. Ultimately, this reduces property values and taxes at the same time the costs to build resilience and to finance resilience increase, which poses a substantial long-term threat to municipal budgets.

OneShoreline's response:

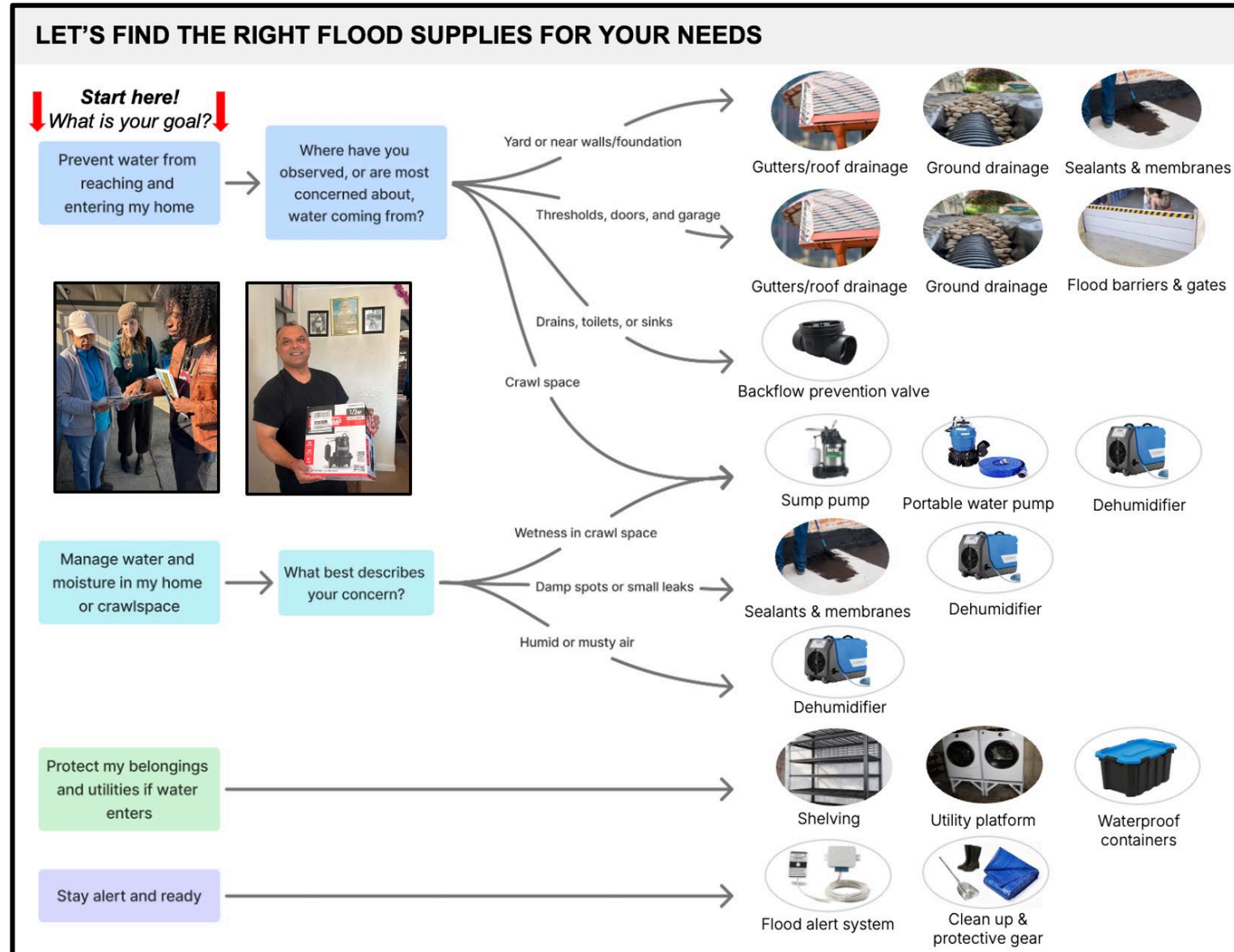
- Combine community-wide resilience projects with household-level risk reduction, both informed by insurance industry models so that local actions translate to improved insurability.



OneShoreline's HPII launched in San Bruno: 7th Avenue Household Flood Protection Supplies Pilot

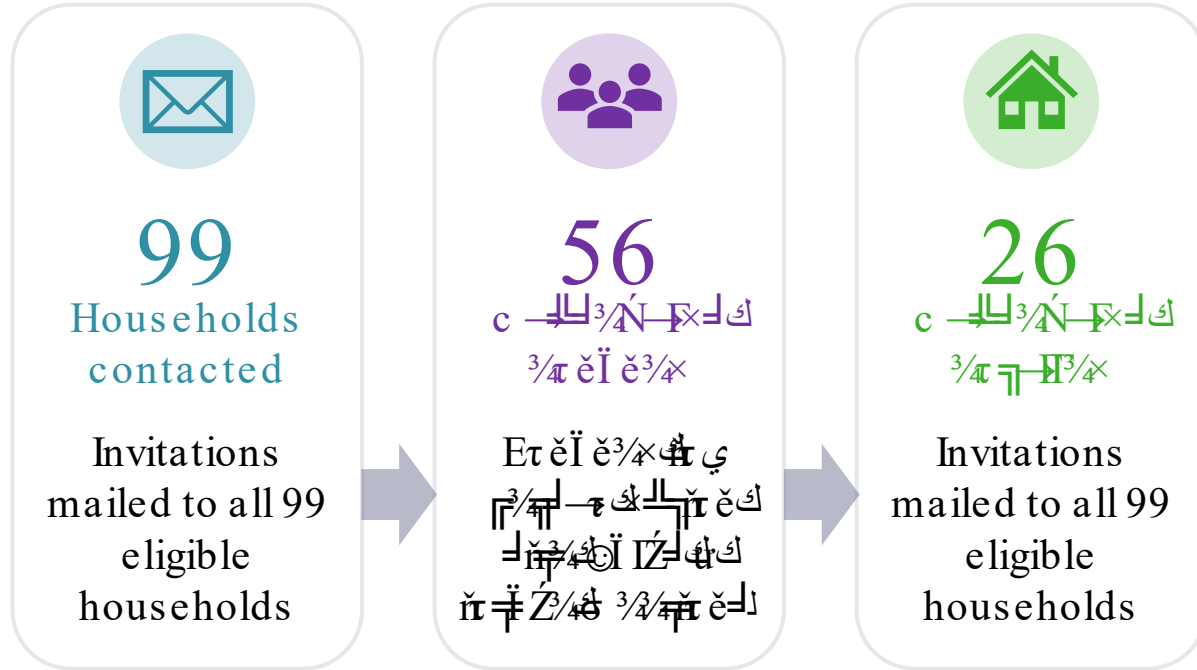
- Intense engagement facilitated by local “community leads” and a FEMA grant to develop a suite of resilience projects
- Decision-support guides: Simple flow charts and visuals help residents compare and select supplies that match their home conditions from a menu developed with Stanford researchers and FEMA guidance.
- OneShoreline provided up to \$1,500 per household.

Partners include:




Home Protection and Insurability Initiative


7th Avenue Household Flood Protection Supplies Pilot



Outreach methods

 Phone call follow-ups

 Text/calls to follow up

 Email



Maintaining San Bruno Creek and the Pump Stations

OneShoreline Creek Maintenance

- The creek along 7th Ave. was last dredged by the County and Caltrans in 2003
- In Sept. 2025, OneShoreline acquired permits from the Regional Water Board, CA Dept. of Fish and Wildlife, and Army Corps of Engineers
- Permits allow for sediment removal one more time between now and 2030

SFO Creek Maintenance

- SFO holds the permits and rights of access for sediment and vegetation removal upstream (south) of San Bruno Avenue
- In 2025, SFO completed maintenance on a portion of that area
- OneShoreline is coordinating with SFO regarding 2026 maintenance

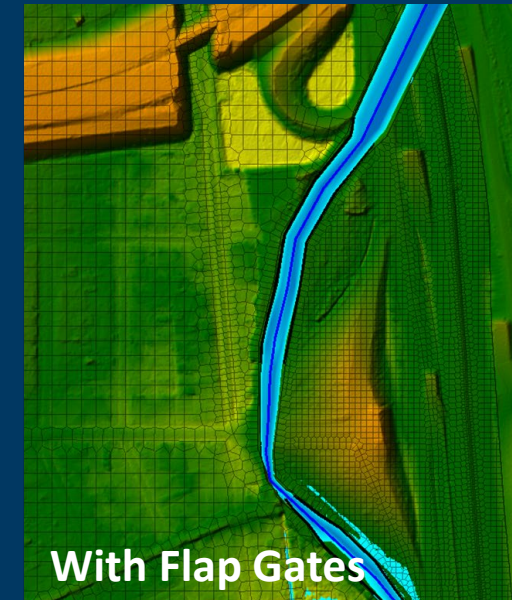
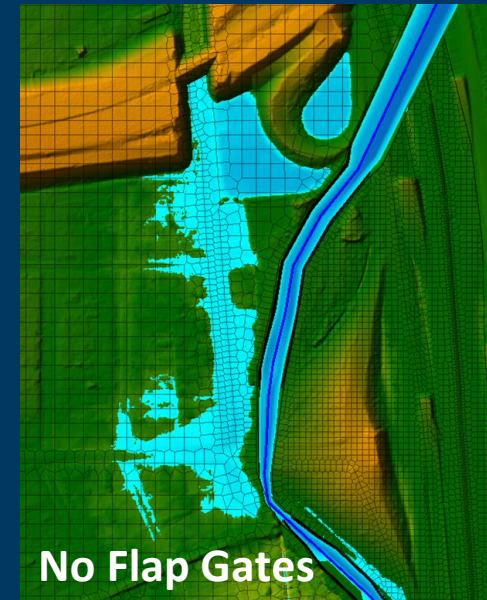
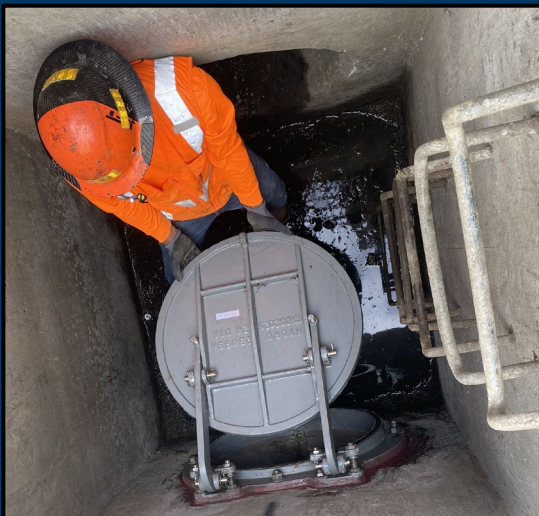
Pump Station Maintenance

- Monthly inspections
- All four Walnut Pump Station pumps have been rehabilitated or replaced since OneShoreline inherited the pump station in 2020.
- Ongoing monthly inspections at both pump stations



Caltrans Detention Basin: Problem Identification and Solution

- Caltrans owns a stormwater detention basin beneath the 380/101 interchange that discharges to the creek.
- Local resident and OneShoreline observations and hydraulic modeling identified that high tides flowed from the creek into the basin, causing flooding along the 7th Avenue.
- OneShoreline shared modeling findings and recommendation to install a new valve at the outfall with Caltrans and advocated for installation of tidal controls.
- In Oct. 2025, Caltrans installed a tide valve; in Jan. 2026, a major storm during a high tide did not result in flooding.

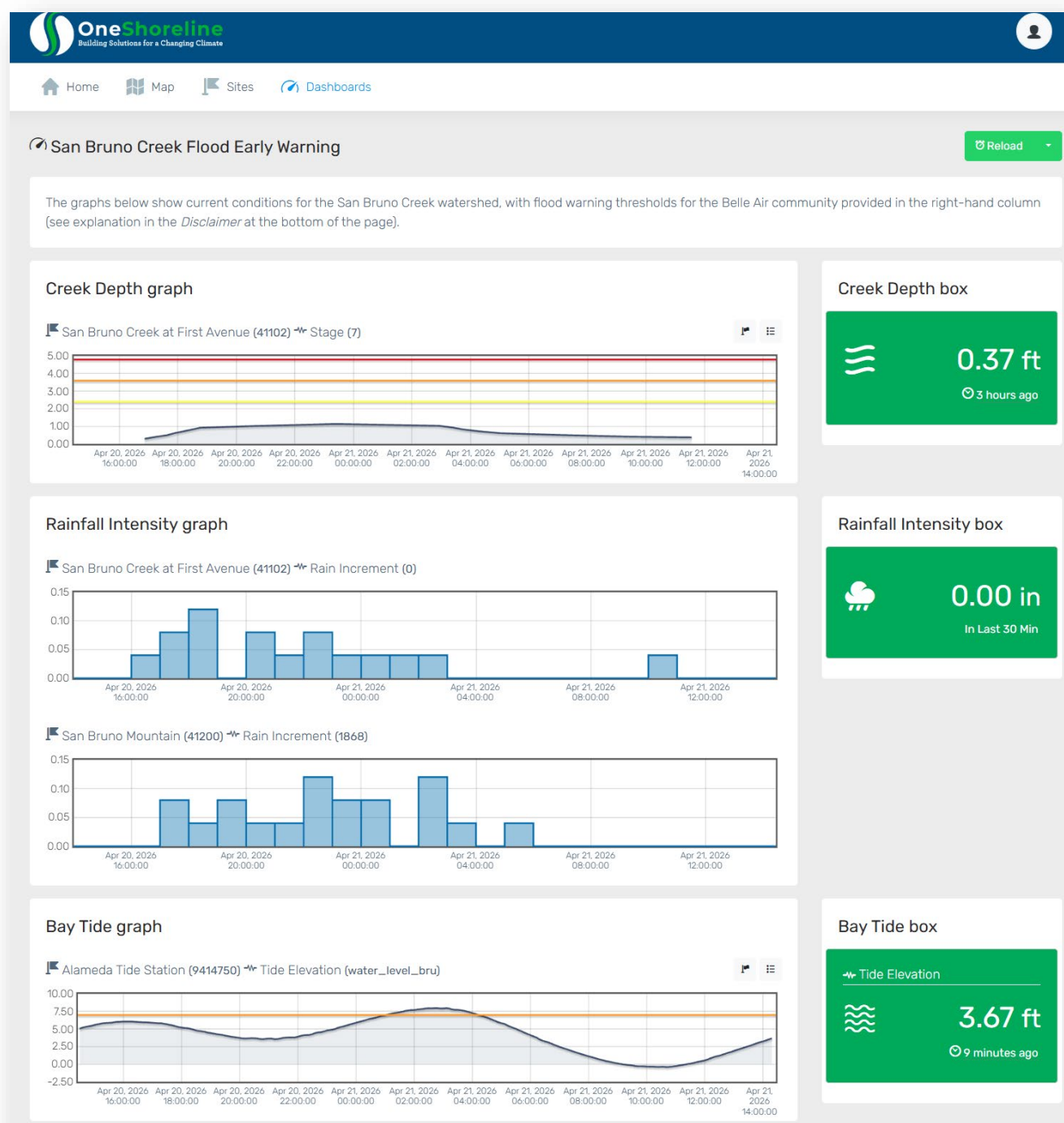


Flood Early Warning System

OneShoreline operates and maintains the countywide Flood Early Warning System — an integrated network of stream, precipitation, and tide gauges located throughout San Mateo County to monitor flood risk in real time.

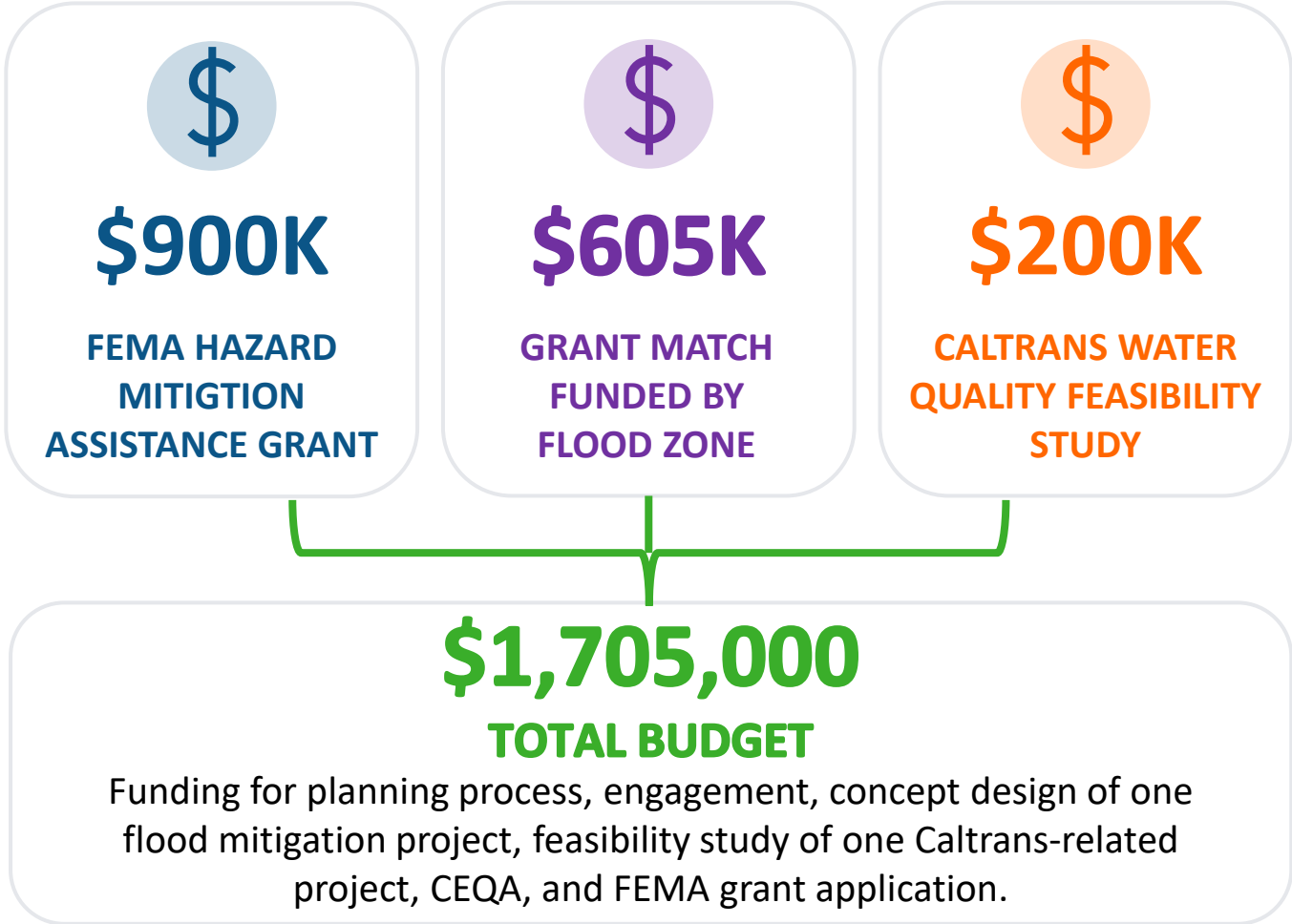
The system pushes automatic alerts to designated emergency contacts when the 75% (**Flood Watch**) and 100% (**Flood Warning**) thresholds are triggered on four flood-prone creeks.

[OneShoreline.org/flood-warning](https://www.oneshoreline.org/flood-warning)



San Bruno Creek Resilience Project

A suite of critical improvements that will prepare the San Bruno Creek Flood Zone & watershed for the future, provide multiple benefits, and meaningfully reduce flood risks.



DESIGNED TO CONTRIBUTE SUBSTANTIALLY TO SAN BRUNO'S FUTURE BCDC-COMPLIANT ADAPTATION PLAN

- Agency stakeholder engagement
- Community Engagement
- Vulnerability Assessment
- Adaptation Strategies
- Policy & Land Use Toolkit
- Funding Analysis
- Implementation Plan + Partnerships
- Project List

San Bruno Creek Resilience Project

RESILIENCE PLAN
Long-term Resilience Plan by Summer 2027

Ä³/ï ã³/ãå Ñ
ç ã ã³/ãå



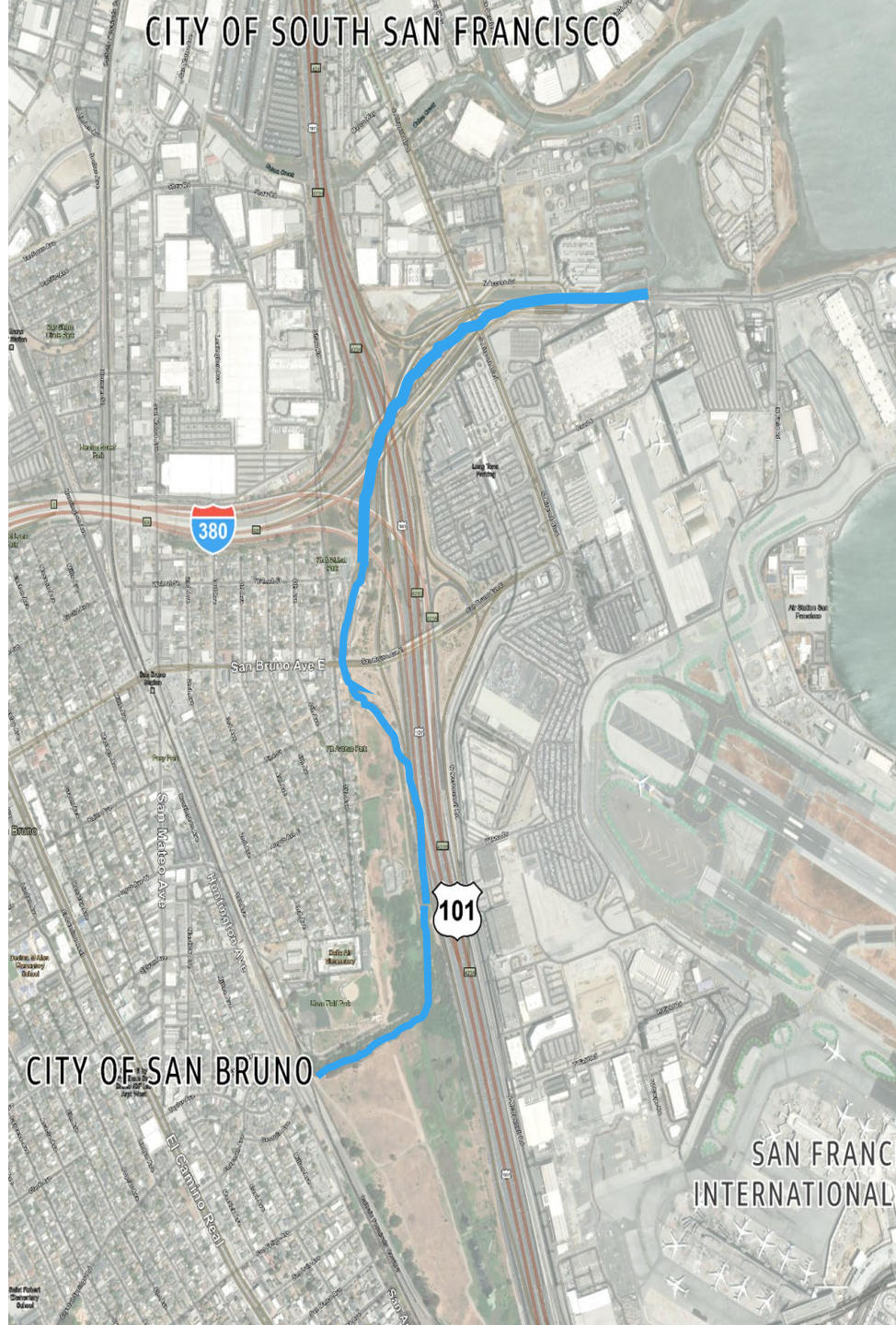
Mid-Term
Projects



x—é ã³/ãå Ñ
©ãã ã³/ãå



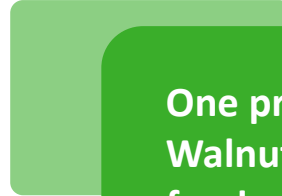
**COORDINATION WITH LOCAL AGENCIES' PROJECTS +
RELATED INITIATIVES**



San Bruno Creek Resilience Project

RESILIENCE PLAN
Long-term Resilience Plan by Summer 2027

Ä³/ï 7³/¶ ¼
¢ 7³/ï ¼



One project at 7th near Walnut will likely be funded by Caltrans

Mid-Term
Projects



We have FEMA funding to advance one project to concept design + CEQA

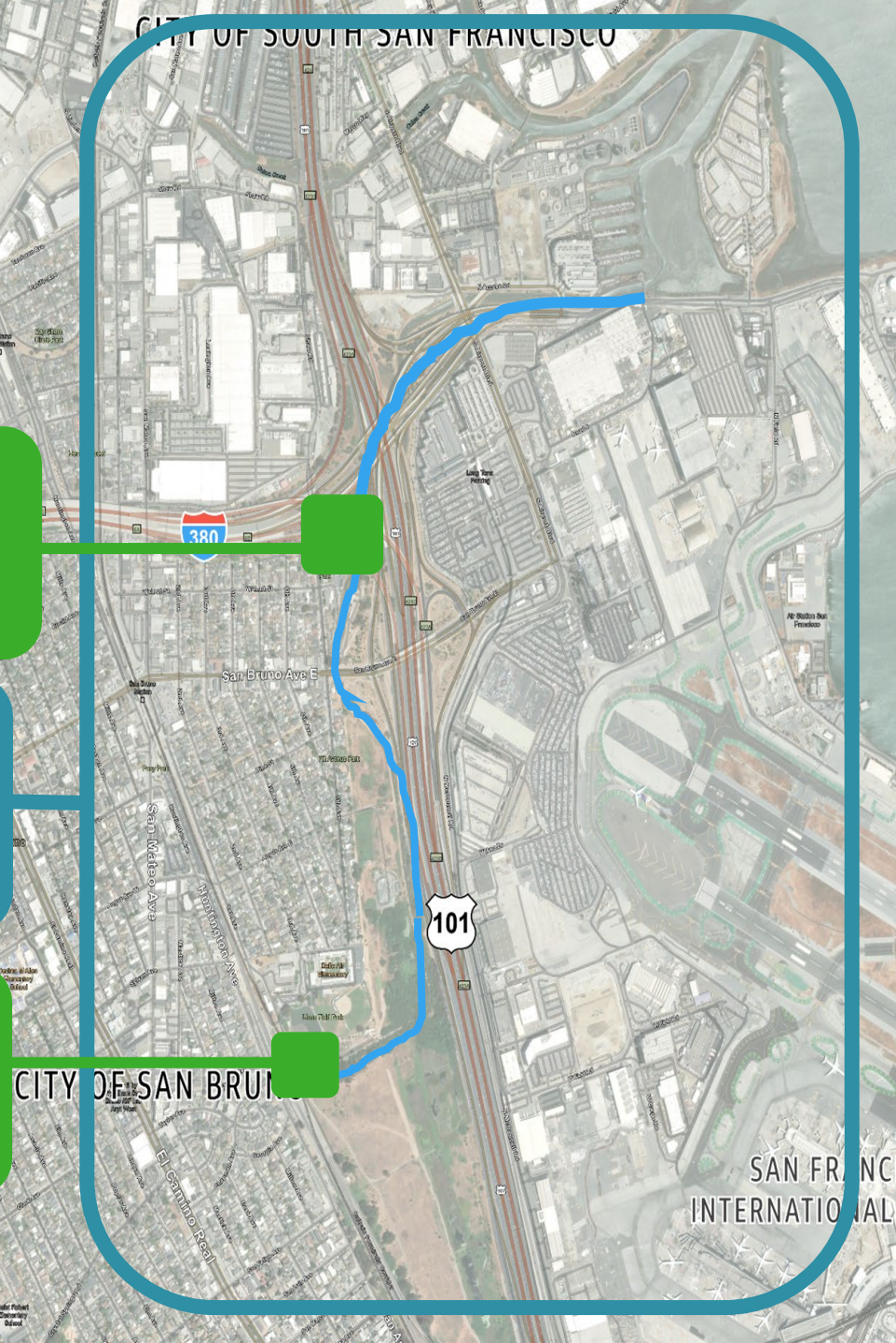
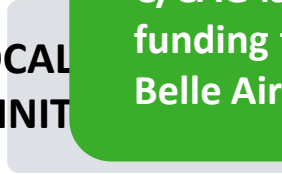
x-¢ ẽ³/¶ ¼
© 7³/ï ¼



C/CAG is pursuing funding for a project at Belle Air school

COORDINATION WITH LOCAL

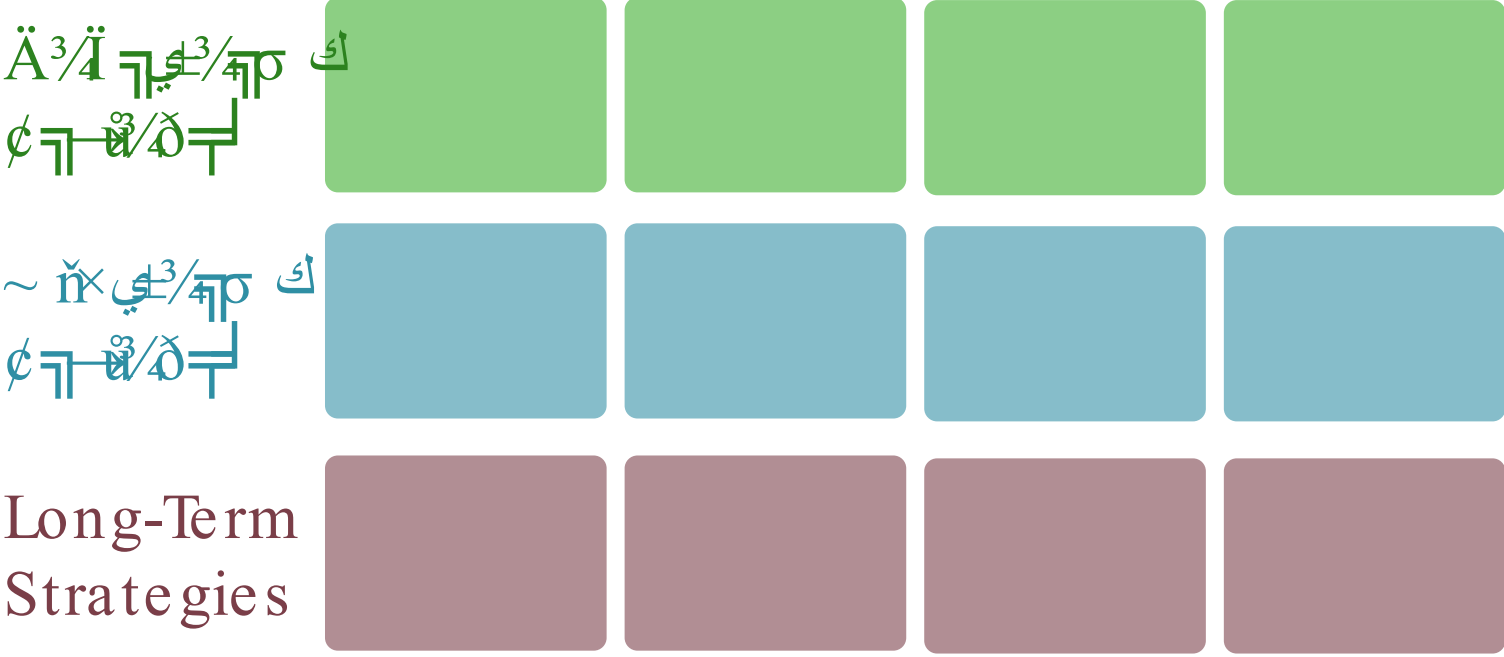
RELATED INIT



San Bruno Creek Resilience Project

RESILIENCE PLAN

Long-term Resilience Plan by Summer 2027





Our team is currently developing and screening 50+ strategies and assessing their contribution to reducing flood risks, additional benefits (community access, ecosystem restoration, etc.), ease of implementation, and other factors.



San Bruno Creek Resilience Project

Community Advisory Group (CAG)

PURPOSE | To ensure community voices, local knowledge, and neighborhood priorities shape the San Bruno Creek Resilience Project.

9] ك
 ~ EE±fÄ] ©
 ±c • د ك
 ~ • 9 c ك □□□□

MEMBERSHIP

- xīō^{3/4} 𐤀 𐤁^{3/4} 𐤃 𐤄 τ 𐤅 𐤆 𐤇 𐤈 𐤉 𐤊^{3/4} 𐤋 𐤌 𐤍 𐤎 𐤏 𐤐 𐤑 𐤒 𐤓 𐤔 𐤕 𐤖 𐤗 𐤘 𐤙 𐤚 𐤛 𐤜 𐤝 𐤞 𐤟 𐤠 𐤡 𐤢 𐤣 𐤤 𐤥 𐤦 𐤧 𐤨 𐤩 𐤪 𐤫 𐤬 𐤭 𐤮 𐤯 𐤰 𐤱 𐤲 𐤳 𐤴 𐤵 𐤶 𐤷 𐤸 𐤹 𐤺 𐤻 𐤼 𐤽 𐤾 𐤿
- 𐤀^{3/4} 𐤁 𐤂 𐤃 𐤄 𐤅 𐤆 𐤇 𐤈 𐤉 𐤊 𐤋 𐤌 𐤍 𐤎 𐤏 𐤐 𐤑 𐤒 𐤓 𐤔 𐤕 𐤖 𐤗 𐤘 𐤙 𐤚 𐤛 𐤜 𐤝 𐤞 𐤟 𐤠 𐤡 𐤢 𐤣 𐤤 𐤥 𐤦 𐤧 𐤨 𐤩 𐤪 𐤫 𐤬 𐤭 𐤮 𐤯 𐤰 𐤱 𐤲 𐤳 𐤴 𐤵 𐤶 𐤷 𐤸 𐤹 𐤺 𐤻 𐤼 𐤽 𐤾 𐤿
- © 𐤀^{3/4} 𐤁 𐤂 𐤃 𐤄 𐤅 𐤆 𐤇 𐤈 𐤉 𐤊 𐤋 𐤌 𐤍 𐤎 𐤏 𐤐 𐤑 𐤒 𐤓 𐤔 𐤕 𐤖 𐤗 𐤘 𐤙 𐤚 𐤛 𐤜 𐤝 𐤞 𐤟 𐤠 𐤡 𐤢 𐤣 𐤤 𐤥 𐤦 𐤧 𐤨 𐤩 𐤪 𐤫 𐤬 𐤭 𐤮 𐤯 𐤰 𐤱 𐤲 𐤳 𐤴 𐤵 𐤶 𐤷 𐤸 𐤹 𐤺 𐤻 𐤼 𐤽 𐤾 𐤿
- 𐤀^{3/4} 𐤁 𐤂 𐤃 𐤄 𐤅 𐤆 𐤇 𐤈 𐤉 𐤊 𐤋 𐤌 𐤍 𐤎 𐤏 𐤐 𐤑 𐤒 𐤓 𐤔 𐤕 𐤖 𐤗 𐤘 𐤙 𐤚 𐤛 𐤜 𐤝 𐤞 𐤟 𐤠 𐤡 𐤢 𐤣 𐤤 𐤥 𐤦 𐤧 𐤨 𐤩 𐤪 𐤫 𐤬 𐤭 𐤮 𐤯 𐤰 𐤱 𐤲 𐤳 𐤴 𐤵 𐤶 𐤷 𐤸 𐤹 𐤺 𐤻 𐤼 𐤽 𐤾 𐤿
- • 𐤀^{3/4} 𐤁 𐤂 𐤃 𐤄 𐤅 𐤆 𐤇 𐤈 𐤉 𐤊 𐤋 𐤌 𐤍 𐤎 𐤏 𐤐 𐤑 𐤒 𐤓 𐤔 𐤕 𐤖 𐤗 𐤘 𐤙 𐤚 𐤛 𐤜 𐤝 𐤞 𐤟 𐤠 𐤡 𐤢 𐤣 𐤤 𐤥 𐤦 𐤧 𐤨 𐤩 𐤪 𐤫 𐤬 𐤭 𐤮 𐤯 𐤰 𐤱 𐤲 𐤳 𐤴 𐤵 𐤶 𐤷 𐤸 𐤹 𐤺 𐤻 𐤼 𐤽 𐤾 𐤿
- 𐤀 𐤁 𐤂 𐤃 𐤄 𐤅 𐤆 𐤇 𐤈 𐤉 𐤊 𐤋 𐤌 𐤍 𐤎 𐤏 𐤐 𐤑 𐤒 𐤓 𐤔 𐤕 𐤖 𐤗 𐤘 𐤙 𐤚 𐤛 𐤜 𐤝 𐤞 𐤟 𐤠 𐤡 𐤢 𐤣 𐤤 𐤥 𐤦 𐤧 𐤨 𐤩 𐤪 𐤫 𐤬 𐤭 𐤮 𐤯 𐤰 𐤱 𐤲 𐤳 𐤴 𐤵 𐤶 𐤷 𐤸 𐤹 𐤺 𐤻 𐤼 𐤽 𐤾 𐤿

San Bruno Creek Resilience Project Community Kick-Off Meeting

- 🍌 PICNIC LUNCH
- 🌿 MEET THE CREEK
- 💬 SHARE YOUR INPUT
- ✏️ ACTIVITIES FOR ALL AGES

SAT MAY 30 12PM
7th & Walnut Park



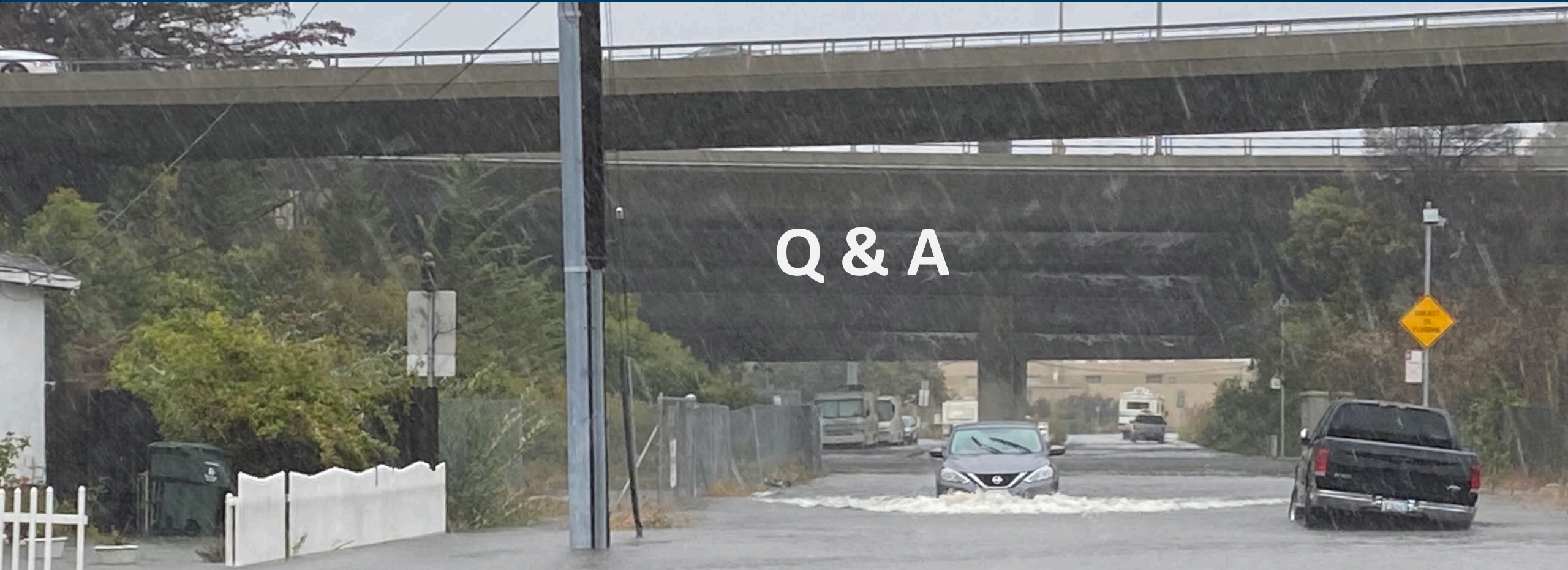
RSVP HERE TO
ATTEND:



OR visit
bit.ly/sanbruno26

Thank you

Q & A





Annual Public Hearing: Assembly Bill 2561 Vacancy Report

May 26, 2026
City Council Regular Meeting

Lindsay Nieri
Human Resources Manager



AGENDA

Objective

Background

Bargaining Groups and Vacancy Rates

Recruitment and Retention

Recommended Action

Next Steps

Questions



OBJECTIVE

Conduct a Public Hearing in accordance with Assembly Bill 2561/Government Code Section 3502.3 Regarding the Status of Vacancies, Recruitment and Retention Efforts.



BACKGROUND

Assembly Bill 2561

1. Track job vacancies;
2. Present information on vacancies and recruitment and retention efforts at least once per fiscal year; and
3. Identify any policies, procedures, and recruitment activities that may present obstacles in hiring.
 - Additional Obligations May Apply if the Vacancy Rate in a Bargaining Unit Exceeds 20%.
4. On June 10, 2025, The City provided Council with AB2561 presentation.
 - Vacancy Rate in a Bargaining Unit did not exceed 20%.



BARGAINING GROUPS

Five (5) Bargaining Groups

Teamsters Local 856, IBT

Fire

Police

Public Safety Mid-Management (PSMM)

Miscellaneous

Teamsters Local 350, IBT

Mid-Management

* On January 29, 2026, the SBMEA was decertified and members joined the unrepresented group



BARGAINING GROUPS – 25/26 FTE

Five (5) Bargaining Groups

Budgeted FTE

Teamsters Local 856, IBT

Fire	34
Police	56
Public Safety Mid-Management (PSMM)	15
Miscellaneous	80

Teamsters Local 350, IBT

Mid-Management	65
----------------	----

TOTAL

250

VACANCY RATES



Teamsters Local 856

Bargaining Groups	Budgeted FTE	Filled FTE	Vacant FTE	Vacancy Rate
Fire	34	30	4	12%
Police	56	51	6	10%
PSMM	15	15	0	0%
Miscellaneous	80	76	4	5%

Effective May 1, 2026

VACANCY RATES



Teamsters Local 350

Bargaining Groups	Budgeted FTE	Filled FTE	Vacant FTE	Vacancy Rate
Mid-Management	65	54	11	17%

Effective May 1, 2026

RECRUITMENT

- Recruitment Operations
 - Maintained internally and aligned with the organization
- Human Resources Management System (HRIS)
 - Promote efficiency and transparency
 - Utilize HRIS for new EE onboarding documents
- Adapted Recruitment Strategies
 - Manager outreach-Communication
 - Increased HR participation in panel interview process





RETENTION

- 4 of the 5 contract negotiations have been completed through 2028
- 36 Hour Workweek
 - Work 9 hours each day for 4 days each week
- Employee Engagement
 - Build out a robust onboarding process
 - Highlight total comp during offer process
 - HR drop in hours
- Learning and Development
 - Structured training series
 - Professional development conferences
 - Tuition reimbursement/ongoing education support



TONIGHT'S RECOMMENDED ACTION

Conduct a public hearing and receive report

NEXT STEPS

In accordance with Assembly Bill 2561, Staff will report back in May or June of 2027 and in coordination with our budget.

QUESTIONS?

City of San Bruno

2025 Urban Water Management Plan and Water Shortage Contingency Plan

Public Hearing • May 26, 2026



Presentation Outline

Three things Council will hear tonight



Purpose



Key Findings



Next Steps

Why is an UWMP Required?

State law requires periodic planning for urban water suppliers

Required by State Law

Urban Water Management Planning Act, AB 797, California Water Code §§10610–10656

Who it Applies To

Urban water suppliers serving more than 3,000 customers or more than 3,000 acre-feet per year

Update Cycle

The plan is updated every 5 years and supports eligibility for State grants and loans



What is an UWMP?

Along-range water planning document that looks ahead to 2050



2050

planning horizon

SB 610

SB 221

development review support

The UWMP evaluates projected water supply and demand, confirms reliability planning, and serves as a foundational document for future Water Supply Assessments.

Due to DWR by July 1, 2026

What is a Water Shortage Contingency Plan?

The City's playbook for preparing for and responding to water shortages

Six Standard Shortage Levels

Level 1 • up to 10%

Level 2 • up to 20%

Level 3 • up to 30%

Level 4 • up to 40%

Level 5 • up to 50%

Level 6 • > 50%

Prepared as an appendix to the 2025 UWMP. It may be updated independently and is recommended for adoption by separate resolution.



Future Water Supply Availability & Reliability

Looking at long-term demand, drought risk, and the Bay-Delta Plan Amendment impacts.



Key Findings

San Bruno's supplies are generally adequate, but the Bay-Delta scenario introduces planning risk



Drought Risk Assessment

A five-year drought beginning in 2026 shows adequate supplies to meet projected demands through 2030

Normal Years

Adequate supplies are projected through 2050

With Bay-Delta Plan Amendment

21%
Single Dry
Years

27%
Multiple Dry
Years

No supply shortfall is projected without the Bay-Delta Plan Amendment

May require WSCP implementation up to Level 3

Public Outreach and Next Steps

Public noticing, hearing, plan adoption, and required submittals

- Nov 2025 60-Day Notices
- May 11 Notice of Public Hearing
- May 11–25 Public Review Period (14-day minimum)
- May 11 & 18 Notices of Availability and Public Hearing (Gov. Code 6066)
- May 26 Public Hearing
- May 26 City to Consider Plan Adoption
- By July 1 Submittal to DWR
- Within 30 Days Submittal to CA State Library, San Mateo County, and available for public review

