



## “The City with a Heart”

Nicole Hanhan, Chair  
Stephen Seymour, Vice-Chair  
Nader Abumuoilish, Commissioner  
Jeanne George, Commissioner  
Janet Monaghan, Commissioner

### AGENDA Culture and Arts Commission Regular Meeting May 21, 2026 6:30 PM

<b>IN PERSON* MEETING LOCATION</b>  San Bruno City Hall 567 El Camino Real, Conference Room 115 San Bruno, CA 94066  *Please turn off all electronic devices before the start of the meeting to prevent disruptions*	<b>Zoom Link</b> <a href="https://sanbruno-ca-gov.zoom.us/j/87948628509">https://sanbruno-ca-gov.zoom.us/j/87948628509</a>  <b>Phone Line:</b> 1-669-444-9171 <b>Webinar ID:</b> 879 4862 8509 <b>Webinar Password:</b> 339456  *Teleconference broadcasting is offered in the meeting via Zoom as a courtesy to the public.  **No public comment accepted via Zoom
--	--

**PUBLIC COMMENT:** In person attendees who want to provide public comment will be asked to fill out a speaker card and turn it in to Tim Wallace, Culture and Arts Commission staff liaison. Public comment may also be emailed to [cultureandarts@sanbruno.ca.gov](mailto:cultureandarts@sanbruno.ca.gov). Comments received via email will not be read aloud during the meeting.

**ACCESSIBILITY:** In compliance with the Americans with Disabilities Act, individuals requiring special accommodations or modifications to participate in this meeting should contact Tim Wallace 48 hours prior to the meeting at (650) 616-7084 or via email at [twallace@sanbruno.ca.gov](mailto:twallace@sanbruno.ca.gov).

\*Any disclosable public writings related to an open session item on a regular meeting agenda and distributed by the City to at least a majority of the Culture and Arts Commission less than 72 hours prior to that meeting are available for public inspection at the City Clerk’s Office at City Hall located at 567 El Camino Real, San Bruno, California during normal business hours. In addition, the City may also post such documents on the City’s Website at <https://www.sanbruno.ca.gov/AgendaCenter>.

1. **CALL TO ORDER**
2. **ROLL CALL**
3. **PLEDGE OF ALLEGIANCE**
4. **REVIEW OF AGENDA**
5. **ACCEPTANCE OF THE MINUTES:** March 19, 2026
6. **PUBLIC COMMENTS FOR ITEMS NOT ON THE AGENDA**  
*Individuals allowed three minutes. It is the Culture and Arts Commission’s policy to refer matters raised in this forum to staff for investigation and/or action where appropriate. The Brown Act prohibits the Culture and Arts Commission from discussing or acting upon any matter not agendaized pursuant to State Law.*
7. **CONDUCT OF BUSINESS**
  - a. Discuss and Approve 2026-27 Work Plan, Assign Ad-Hoc Committees and Schedule Kick Off Ad-Hoc Committee Meetings

- b. Review Submissions and Select Artists for Community Art Gallery Program 2026-2027
- c. Consider Combining Art on Loan and Community Art Gallery Programs and Renaming the Combined Program
- d. Select Movies-in-the-Park for Public Voting

**8. ITEMS FROM COMMISSIONERS**

**9. ITEMS FROM STAFF**

- a. Update on Posy Park Sculpture (Oral)
- b. Update on Posy Park Mural Restoration (Oral)
- c. Update on Paseo Mural at 568 San Mateo Avenue (Oral)
- d. Update on Call to Artists for Mural at Centennial Plaza (Oral)
- e. Report Out on Shakespeare in the Park event (Oral)
- f. Invitation to Posy Parade and Community Day (Oral)
- g. Invitation to Juneteenth (Oral)

**10. ADJOURNMENT**

**The next Regular Culture and Arts Commission meeting will be held  
on July 16, 2026, at 6:30 p.m.**

POSTING: I declare a copy of this agenda was posted at City Hall, 567 El Camino Real, San Bruno, among other locations in the city limits of San Bruno on May 14, 2026, by 6:00 p.m.



\_\_\_\_\_  
Lupita Huerta, City Clerk



## “The City with a Heart”

Nicole Hanhan, Chair  
Stephen Seymour, Vice-Chair  
Jeanne George, Commissioner  
Janet Monaghan, Commissioner

### MEETING MINUTES

#### Culture and Arts Commission March 19, 2026

1. **CALL TO ORDER:** Chair Hanhan called the meeting of the Culture and Arts Commission to order at 6:31 p.m.
2. **ROLL CALL:** Commissioners Present: Chair Nicole Hanhan, Vice-Chair Stephen Seymour, Jeanne George, and Janet Monaghan. Commissioner Absent: Nader Abumuoish. Staff Present: Ibarra, Karlen, Stefanko, and Wallace.
3. **PLEDGE OF ALLEGIANCE:** Commissioner Monaghan led the Pledge of Allegiance.
4. **REVIEW OF AGENDA:** Chair Hanhan requested to move Conduct of Business item 7.b. after Review of Agenda. Accepted unanimous.

#### CONDUCT OF BUSINESS:

- 7.a Consider a Recommendation to the City Council for the San Bruno Improvement Group Application for a Mural at 568 San Mateo Avenue - **Superintendent Wallace** presented the staff report. Artist Julie Engelmann presented. She spoke about the inspiration behind the proposed mural and each element. **MSC Seymour/Monaghan**. Accepted 4-0.  
Sadana Traxler from the San Bruno Improvement Group expressed her gratitude for the Commission’s support and invited everyone to the Meet the Muralist event on Saturday March 21 from 5pm to 7pm at the Society of West-Coast Artists.
5. **ACCEPTANCE OF MINUTES:** Minutes from January 15, 2026. **MSC Seymour/Monaghan**. Accepted 4-0.
6. **PUBLIC COMMENTS:** None.
7. **CONDUCT BUSINESS:**
  - b. Conduct election of 2026 Commission Officers – **Superintendent Wallace** presented the staff report.  
**Commissioner Monaghan** nominated **Chair Hanhan** for Chair. **MSB Monaghan/Seymour**. Accepted 4-0.  
**Chair Hanhan** nominated **Vice Chair Seymour** for Vice Chair. **MSB Hanhan/ Monaghan**. Accepted 4-0.
  - c. Discuss: 2026-27 Work Plan Priorities, Ad-Hoc Committee Focus, and Potential Arts Programming Public Survey – **Superintendent Wallace** presented the staff report. **Special Assistant Stefanko** presented the Community Arts Program Interest Survey. **Commissioners** asked questions about the survey and provided input. **Commissioners** asked questions about the work plan and provided input. **Director Karlen** mentioned City Council will discuss their Strategic Initiatives for 2026-2027 at the March 24 meeting. He stated that Staff would solidify a list with the ideas discussed by the Commissioners and inputs from City Council’s meeting. This item will be revisited at the next meeting.

- d. Consider the Proposed Artist Call, Jurying Criteria with Scoring Rubric, and Timeline Including the Installation Period for a Mural at 474 San Mateo Avenue facing Centennial Plaza - **Special Assistant Stefanko** presented the staff report. **Commissioners** recommended staff to change the total project budget in the Call for Artist to range between \$30,000 and \$65,000.

**8. ITEMS FROM COMMISSIONERS:**

- a. **Chair Hanhan** invited everyone to the First Rooted in Resilience Fair on April 18 from 11:00am to 5:00pm at Belle Air Elementary School.
- b. **Chair Hanhan** asked if hybrid meetings will be part of City Attorney study to implement virtual public participation. **Director Karlen** confirmed.

**9. ITEMS FROM STAFF:**

- a. Receive and File: Key Takeaways from City Council Study Session on Merging Culture and Arts Commission and Parks and Recreation Commission - **Superintendent Wallace** presented the staff report.
- b. Update on Posy Park Sculpture - **Superintendent Wallace** reported that on February 24, City Council approved the sculpture "Pulse of Connection" by Maxwell Emcays. Contract with Maxwell Emcays is being reviewed by the City Attorney's office. He also mentioned that restoration of the existing mosaic tile mural at Posy Park will begin next Tuesday.
- c. Call to Artists for Community Art Gallery - **Superintendent Wallace** informed Call to Artist deadline is April 17. 3 Submissions have been received.
- d. Report Out on Lunar New Year event - **Superintendent Wallace** spoke about the 2026 Lunar New Year Celebration held on February 10 at the Senior Center due to rain. Well received by over 100 people who attended.
- e. Invitation to Shakespeare in the Park - **Superintendent Wallace** invited everyone to Shakespeare in the Park event on May 3 from 2:00pm to 3:00pm at Rotary Pavilion in City Park. A condensed version of a Shakespeare's play Julius Ceasar will be presented.

- 10. ADJOURNMENT:** With no other business to be conducted, **Chair Hanhan** adjourned the meeting at 8:31 p.m.



**DATE:** May 21, 2026

**TO:** Culture and Arts Commission

**FROM:** Collette Murphy Stefanko, Community Services Special Assistant  
Travis M. Karlen, Community Services Director

**SUBJECT:** Discuss and Approve FY 2026-27 Work Plan, Assign AdHoc Committees and Schedule Kick Off Ad-Hoc Committee Meetings

**BACKGROUND:**

It is best practice that the Culture and Arts Commission annually establishes a work plan to guide its efforts in supporting arts, culture, and public art initiatives throughout the community. Ad-hoc committees are formed to allow Commissioners to take an active role in advancing specific projects and providing focused support to staff.

At previous meetings, the Commission identified initiatives and informally assigned commissioners to serve on related ad-hoc committees. As membership and priorities evolve, it is beneficial to periodically revisit the work plan to confirm that selected initiatives remain aligned with the Commission's interests and that committee assignments reflect each Commissioner's availability and willingness to actively participate.

**DISCUSSION:**

As a volunteer advisory body, the Commission is most effective when it focuses on a manageable number of clearly defined priorities. Focusing on a manageable number of initiatives allows Commissioners to dedicate meaningful time to each effort, provide consistent staff support, and achieve measurable outcomes. When considering potential priorities, it is important to follow good governance practices and ensure alignment with the City Council's adopted strategic initiatives and policy priorities.

Council priorities under consideration for FY 2026-27 include the Senior Center Remodel, City Software Overhaul, Downtown Beautification, a Street Sweeping Study, Building a Better San Bruno (focused on increasing developer interest), Traffic Safety and Lighting, as well as efforts to Increase Revenue. Aligning Commission initiatives with these priorities ensures that advisory input supports broader City goals and that staff resources are used effectively.

Commissioners should also recognize that most initiatives require staff support, funding, and other resources. If the Commission is proposing new efforts, they are encouraged to consider budget impacts, including staff time, and to identify potential funding sources, partnerships, or grants. Any work plan items requiring additional staff time or financial resources will be reviewed by the Department Director and may require City Council appropriation.

Staff recommends that the Commission maintain approximately five priority initiatives or ad hoc committees and confirm active Commissioner participation in each. Establishing a focused work plan will help ensure that:

- Committees remain productive and action-oriented

- Responsibilities are clearly assigned and understood
- Projects move forward in a timely manner
- Staff resources are used efficiently
- The Commission can demonstrate tangible accomplishments over the course of the year

For each priority initiative, staff recommends identifying:

- A clear scope or objective
- Assigned commissioners
- Anticipated timeline and/or key milestones
- Expected outcomes or deliverables
- A schedule for Ad Hoc meetings

This is an appropriate time for the Commission to reassess its current work plan and committee structure. The Commission may choose to continue, modify, consolidate, or sunset existing committees based on current priorities, available capacity, and alignment with City goals. Initiatives that are not identified as priorities may be deferred for future consideration.

Based on discussions with the Commission, staff has attached a recommended and achievable work plan for review (Attachment 1). Following Commission acceptance, it will be forwarded to the City Council for approval. Once approved, the work plan will serve as the guiding framework for the Commission's efforts for the duration of the fiscal year.

Data from the current program interest survey, included as Attachment 2, highlights preliminary arts-related interests within a broader recreation and enrichment context. The Commission may wish to gather additional community input on the types of visual and performing arts programs residents would like to see offered. Collecting this information through surveys and other documented outreach methods aligns with best practices, supports responsible use of public funds, and can help inform the Commission's efforts to provide arts and culture experiences that reflect community interests.

The Community Services Director will review proposed initiatives to ensure they are feasible within existing staff capacity and budget. If sufficient staff time or resources are not available, the Director may recommend modifying, deferring, or recommending that the initiative not proceed. This is to ensure the Department can effectively manage its operational responsibilities and City Council priorities.

**FISCAL IMPACT:**

Funding for existing initiatives is included in the adopted FY2025-26 budget and requested in the proposed FY2026-27 budget. Any new initiatives may be considered for funding from the City Art Fund with City Council approval.

**RECOMMENDATION:**

Review and make adjustments to the recommended work plan for FY 2026-27, assign or reaffirm participating commissioners for each initiative's ad hoc as needed and schedule kick-off ad hoc meetings.

**ATTACHMENTS:**

1. Draft Culture and Arts Commission Work Plan FY2026-27
2. Community Interest Survey Data

**City of San Bruno Culture and Arts Commission Work Plan FY 2026/27**

Commission Approval: TBD

Council Approval: TBD

	<b>Work Plan Item</b>	<b>Commissioners Involved</b>	<b>Timeline</b>	<b>Intended Outcomes</b>
1	Attendance and volunteering at City Community Services events and encouraging attendance for residents and visitors	All	Ongoing	To strengthen each commissioner’s connection to the community, deepen their firsthand understanding of programs and services, and enhance their ability to fulfill policy and advisory responsibilities, commissioners are encouraged to maintain an active presence at community events. Their participation demonstrates visible support for staff and helps reinforce public trust and engagement. Each commissioner will plan to attend at least two events annually and, for at least two additional events each year, take an active role in contributing to an arts or cultural community engagement component that aligns appropriately with the event’s purpose. This approach ensures consistent exposure, meaningful involvement, and sustained support for arts and culture initiatives.
2	Assist with promotion of City arts and culture programs and events	All	Ongoing	Commissioners will assist City staff with submission of programs and events to public calendars as well as traditional and social media channels to help increase visibility in the community.
3	Explore feasibility of programming at Centennial Plaza (Contingent Upon City Council Approval)	Ad Hoc: 1. 2.	Completion: May 2027	Commissioners will recommend programs/events for 2026/27 that meet identified public interests and comply with City permitting. Commissioners will conduct public surveys to determine public interests, propose one or two programs with clear and detailed plans, develop a timeline, and prepare a budget. Funding may be considered from the City Art Fund with the Commission’s recommendation and City Council’s approval. All programs recommended should rely on Commissioner support, planning, and implementation with minimal staff involvement required.
4	Downtown Public Art Project (Contingent Upon City Council Approval)	Ad Hoc: 1. 2.	Completion: May 2027	Identify and recommend a public art project in downtown San Bruno to align with the Council’s initiatives. The Culture and Arts Commission’s involvement in public art planning is to provide a structured forum for public participation, gather and

				synthesize community input, and develop informed recommendations to the City Council that reflect community priorities and guide public art planning and investment decisions. The ad hoc will assist staff with the artist call and serve on the jury panel.
5	Mural Program	Ad Hoc: 1. 2.	Ongoing	The ad hoc committee will review proposals, as needed, in accordance with the mural program and provide recommendations to the City Council regarding acceptance. The ad hoc may also assist staff with the artist call and participate as members of the jury panel. The Culture and Arts Commission's role in public art planning is to provide a structured forum for public participation, gather and synthesize community input, and develop informed recommendations to the City Council that reflect community priorities and guide public art planning and investment decisions.
6	Rotating Exhibitions in City Spaces	Ad Hoc: 1. 2.	Ongoing	Ad hoc will advise on guidelines and processes and serve on the jury panel.
7	Winter Windows Wonderland	Ad hoc: 1. 2.	December 2026	Ad hoc will jury holiday window decorations in downtown businesses.

# San Bruno RAC Community Voices Report

Survey responses through April 30, 2026 · Prepared for Planning Team

**302**

Total Responses  
Collected

**87%**

Likely or Very  
Likely to Enroll

**55%**

Current RAC  
Members  
Responding

**45%**

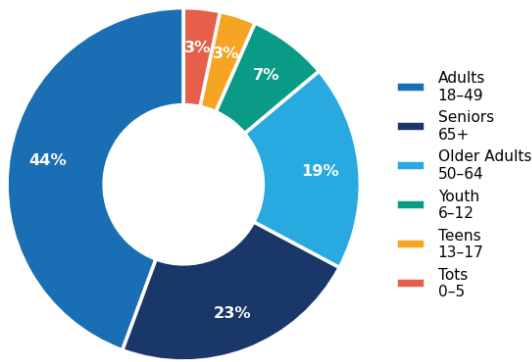
Non-members —  
New Audience to  
Win

## 1 RESPONDENT PROFILE

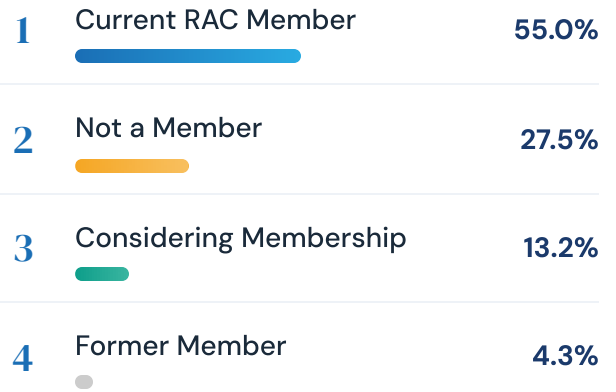
### Who's Talking to Us

Understanding who responded helps us interpret interests and identify gaps. Adults 18–49 dominate, but seniors (65+) showed up in strong numbers — a signal that older adults are highly motivated and should be a programming priority.

### Respondents by Age Group



### MEMBERSHIP STATUS



### CURRENT ACTIVITY LEVEL



#### 🔑 KEY FINDING

**45% of respondents are non-members.** This is a massive warm-audience opportunity — people engaged enough to take the survey but not yet paying members. Program design that converts them is a direct revenue play.

#### 👴 SENIOR SIGNAL

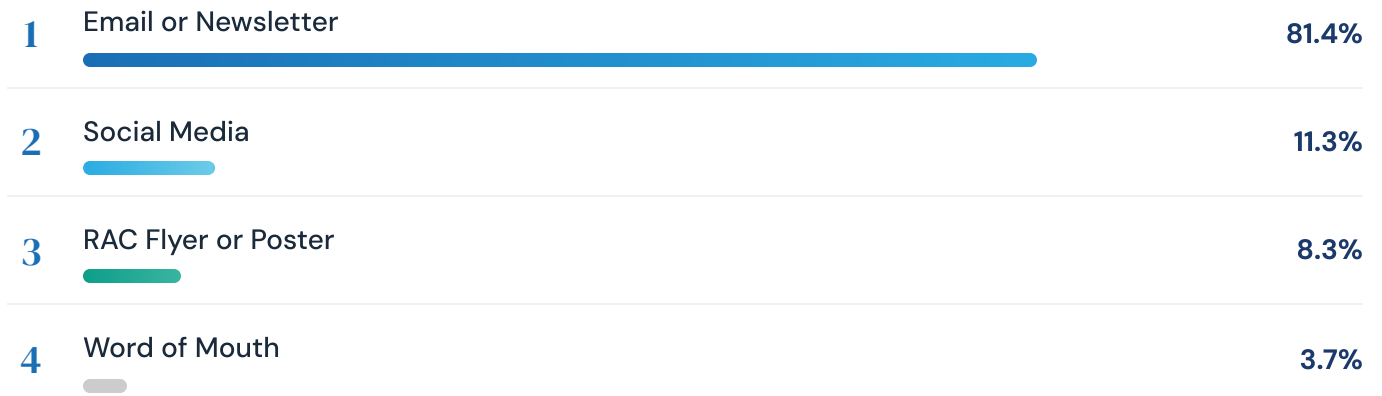
**22.8% of respondents are 65+,** the second-largest age group. Seniors are highly motivated and underserved. Multiple write-in responses reinforced this with specific class requests (tai chi, gentle yoga, dance).

#### 👉 ACTIVE AUDIENCE

**64.6% are already active** several times a week or daily — these are serious participants who want structured, quality programming. They'll be loyal attendees if the content is right.

## HOW THEY HEARD ABOUT THE SURVEY

Email is overwhelmingly the primary channel — which validates the email-first marketing strategy.

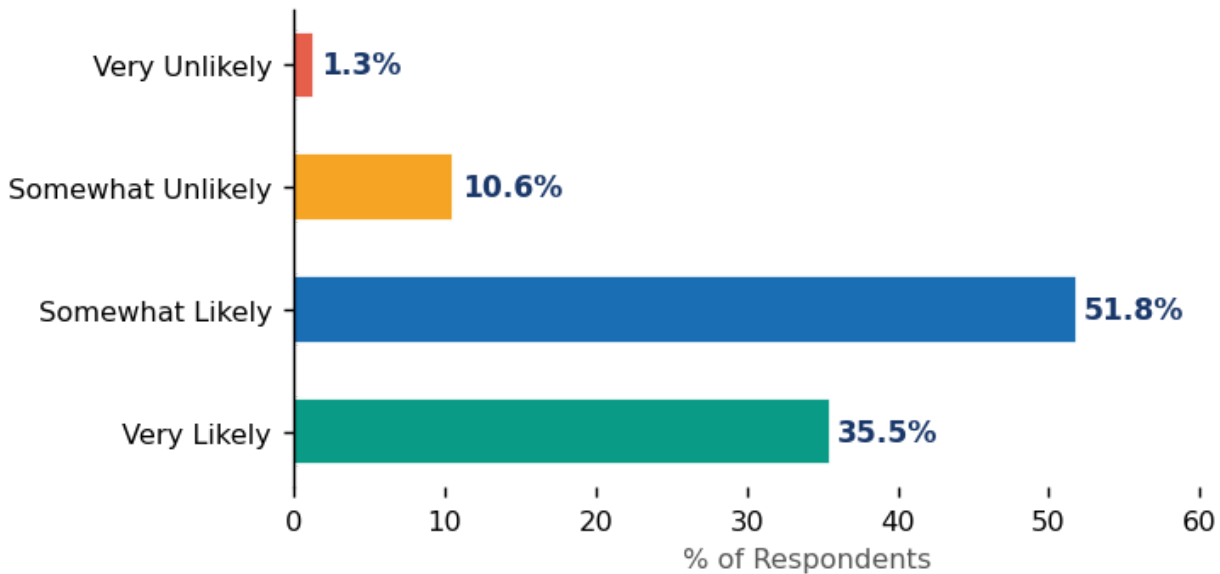


## 2 ENROLLMENT INTENT

# Demand is Real — and Immediate

The intent to enroll signals a community that is ready to show up. 87% of respondents are leaning toward enrollment — an exceptional baseline to build programming around.

### Likelihood to Enroll in Next 6 Months



# The Opportunity in "Somewhat Likely"

The single largest group — 51.8% — said they are **somewhat likely**, contingent on what's offered and schedule fit. This is not uncertainty; it is a direct brief. These respondents are telling us exactly what they need to convert: the right programs at the right times. Everything else in this report is the roadmap to win them.

87%

Likely or Very Likely to enroll in 6 months

51.8%

"Somewhat likely" — convertible with right program mix

35.5%

"Very likely, looking forward to it!" — core committed audience

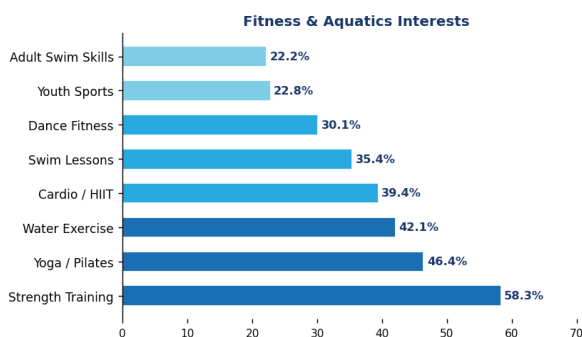
11.9%

Skeptical — cost and schedule are likely the drivers

## 3 PROGRAM INTERESTS

# What the Community Wants

Across four program categories — fitness, enrichment, arts, and social/club — clear winners emerged. These are not just preferences; they are the direct inputs for Fall program slot allocation.



## AQUATICS — A CLEAR PRIORITY

Three aquatics offerings landed in the top 8: **Water Exercise (42.1%)**, **Swim Lessons (35.4%)**, and **Adult Skills Swim (22.2%)**. Pool programming is the RAC's biggest differentiator — and the community is clearly asking for it across multiple formats. **Item 7a**

★ PLANNING NOTE

**Strength training tops the list at 58.3%** — more than half of all respondents. This demands prime-time scheduling and possibly expanded floor or class space. Yoga/Pilates at 46.4% confirms a strong mind-body programming lane alongside.

WRITE-IN HIGHLIGHTS

Tai Chi (multiple requests)

Pickleball Lessons

Step Aerobics

Masters Swimming

Spin Class

Adult Tap Dance

Adaptive Classes (special needs)

Prenatal Fitness

Youth Run Club

 ENRICHMENT & RECREATION INTERESTS

1	Cooking or Nutrition	49.7%
2	Home Garden Skills	38.1%
3	Language Learning	33.8%
4	Botanical Arrangement	29.5%
5	Chess / Board Games	20.2%
6	Technology Basics	16.6%

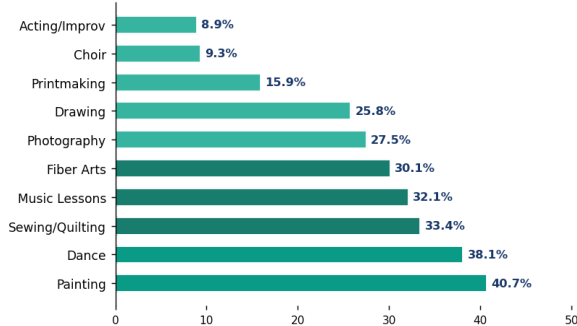
**STANDOUT**

Cooking/Nutrition leads enrichment at **49.7%** — nearly half of all respondents. This has broad demographic appeal and high social media shareability as a program type.

**PLANNING NOTE**

Technology basics (16.6%) aligns directly with the **senior audience** — a practical gateway program that builds comfort and regular visitation patterns.

Visual & Performing Arts Interests



**ARTS — BROADER THAN EXPECTED**

Painting leads at **40.7%** and dance is close behind at **38.1%**. Sewing/quilting (33.4%) and music lessons (32.1%) suggest strong demand for skill-based creative work — not just casual open studio.

Painting 40.7%

Dance 38.1%

Sewing/Quilting 33.4%

Music Lessons 32.1%

Fiber Arts 30.1%

Photography 27.5%

**SURPRISING STRENGTH**

**Dance (38.1%)** and **Music Lessons (32.1%)** both outperformed expectations. Write-in responses specifically called out adult tap, ballet folklórico, ukulele, piano, and violin — suggesting demand for a broader performing arts slate than initially anticipated.

15.9% said they are not interested in visual or performing arts — a meaningful minority that validates the need for robust fitness and enrichment alternatives running in parallel.

## 📍 CLUB-STYLE & SOCIAL ACTIVITIES

1	Walking / Hiking Group	38.4%
2	Arts & Crafts Open Studio	34.1%
3	Sports Skills Drop-in Clinics	33.4%
4	Open Game Night	24.8%
5	Gardening Club	22.5%
6	STEM Clubs	19.9%

### 👤 COMMUNITY CONNECTION

The Walking/Hiking Group topping this category is no accident — **it's free, social, and low-barrier**. This is an ideal entry-point program that builds RAC community and leads to paid class enrollment over time.

### 🏓 PICKLEBALL OPPORTUNITY

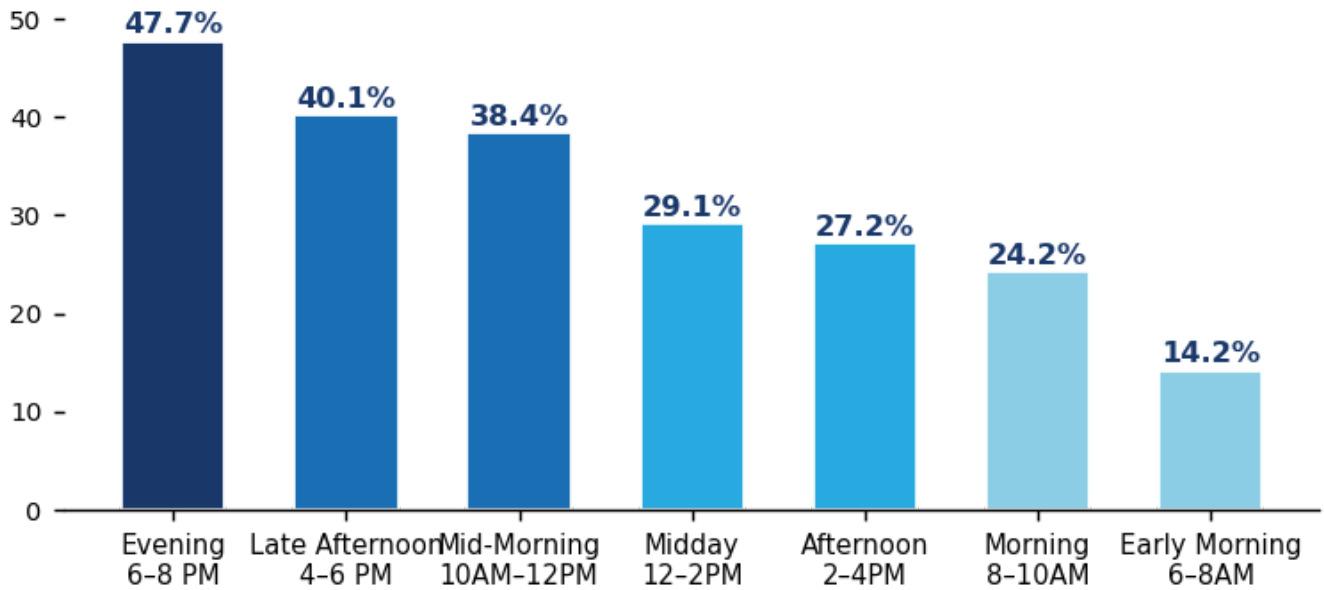
Sports Skills Drop-in Clinics ranked 3rd, and pickleball was specifically called out multiple times in write-ins. Given the national pickleball surge, this is a high-visibility quick win for Fall scheduling.

## 4 SCHEDULING PREFERENCES

# When They Want to Come

Scheduling is the #1 barrier to enrollment at 82%. These preferences are not suggestions — they are requirements for program viability.

## Preferred Weekday Class Times (Mon-Fri)



### #1 WEEKDAY TIME

**Evening (6-8 PM)** at **47.7%** is the most-requested weekday slot — and likely the most underserved. Working adults need programming after 5 PM. This is the clearest single scheduling directive in the data.

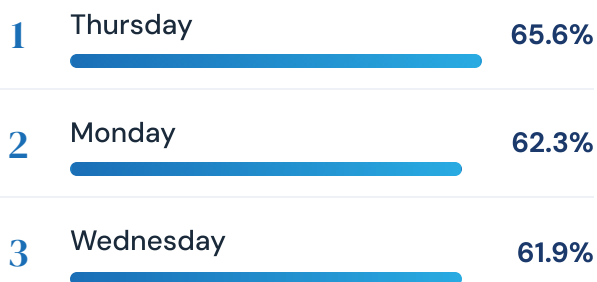
### SATURDAY SWEET SPOT

**Mid-morning (10AM-12PM)** leads Saturday at **51%**, followed closely by morning (38.1%). Saturday programming should be concentrated in the 8AM-noon window, with secondary afternoon options.

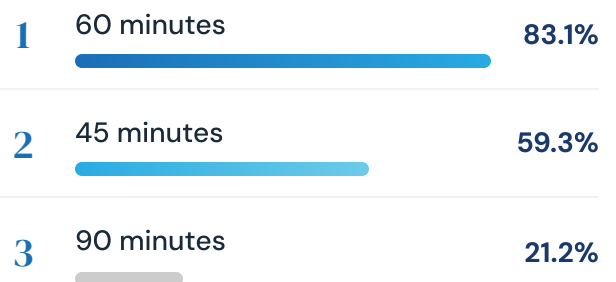
### SUNDAY REALITY

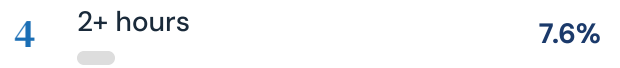
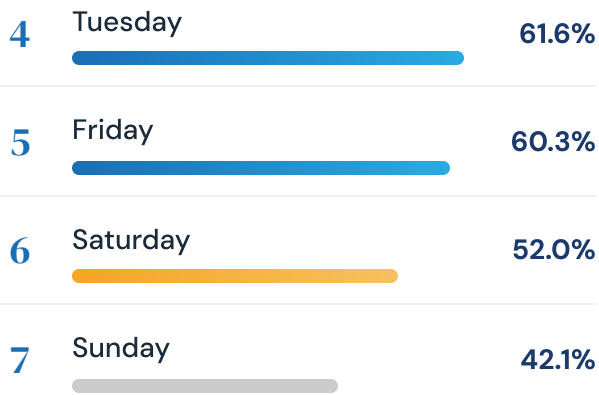
**38.1% say Sundays are not generally convenient.** But those who do want Sunday classes prefer midday (12-2 PM) and afternoon (2-4 PM). Several write-ins called for earlier Sunday hours — consider 10AM as a test.

## PREFERRED DAYS OF THE WEEK



## PREFERRED SESSION LENGTH

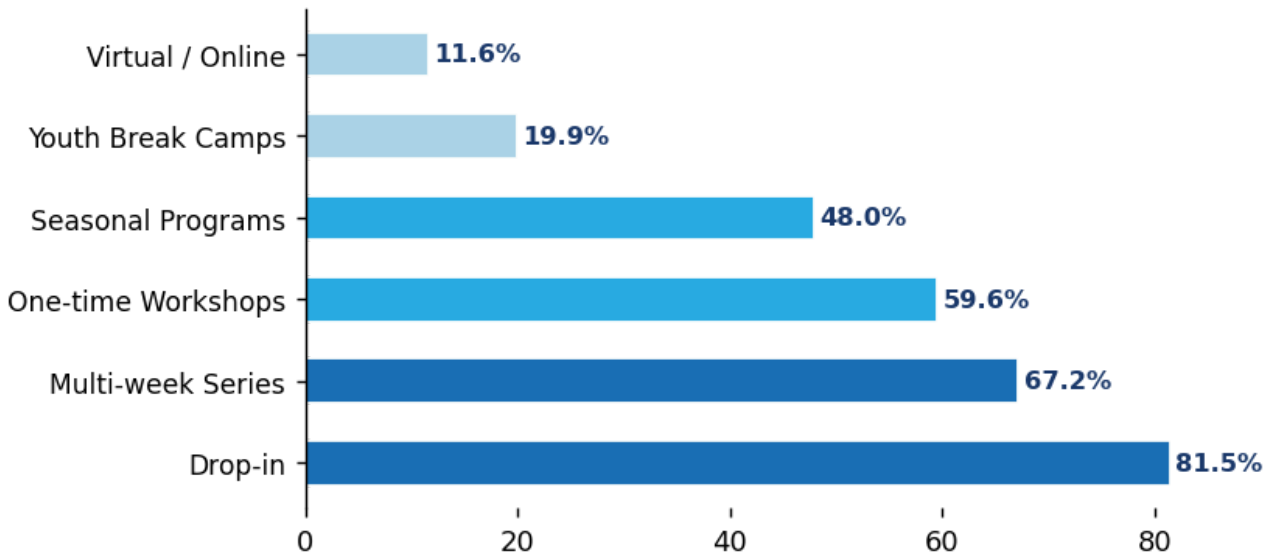




**PLANNING NOTE**

**60 minutes is the clear standard** at 83%. Design class templates around the 60-minute format. The 45-minute option at 59.3% gives flexibility for drop-in and condensed formats.

**Preferred Class Formats**



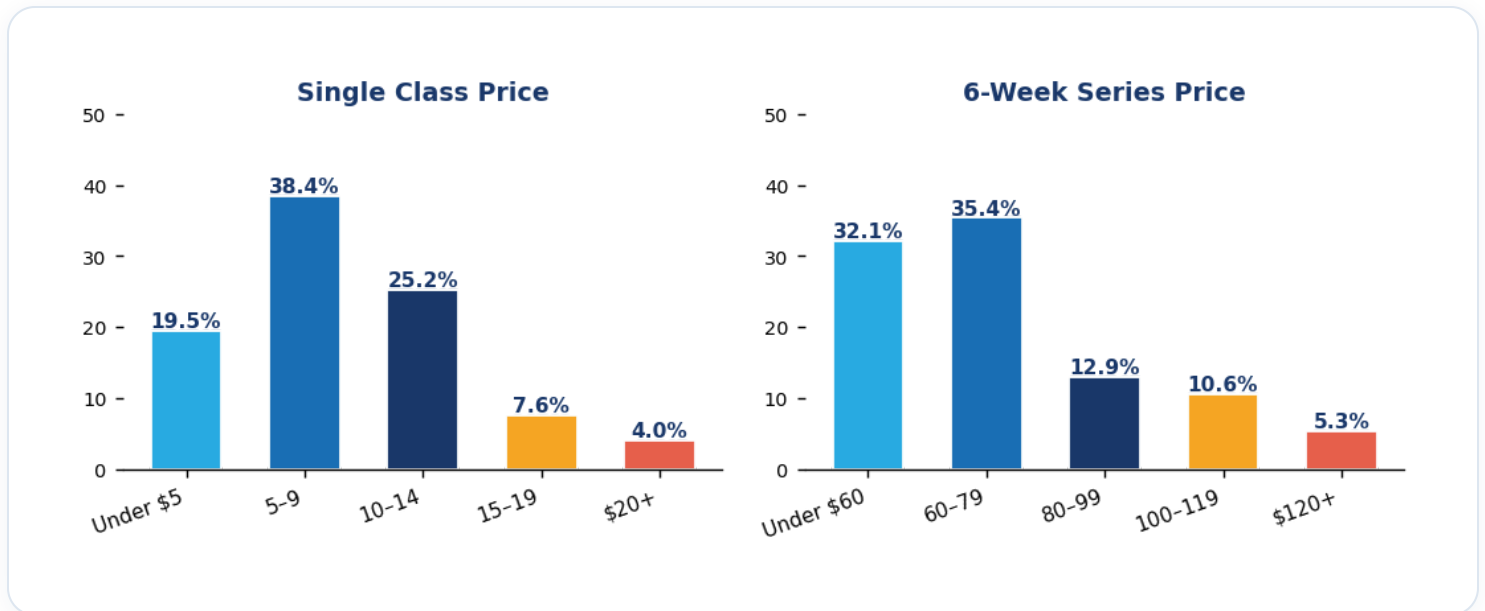
**FORMAT INSIGHT**

**Drop-in is #1 at 81.5%** — an overwhelming preference for flexibility and no commitment. However, multi-week series (67.2%) and one-time workshops (59.6%) both score extremely high, meaning the community wants BOTH options. Offer drop-in as the entry point with a pathway to series enrollment.

**5 PRICING & VALUE**

# What They'll Pay

Pricing is the second biggest barrier at 57.8%. The data is clear on sweet spots — and the preferred incentive structures give us a direct toolkit to reduce friction.



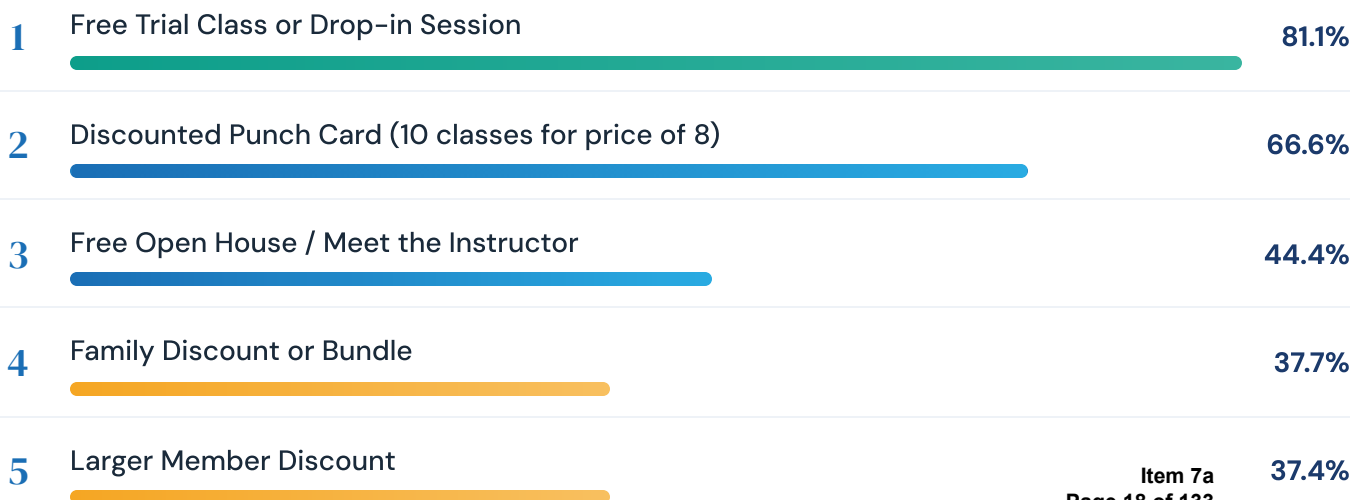
**SINGLE CLASS SWEET SPOT**

**\$5–\$9 leads at 38.4%**, with \$10–\$14 at 25.2%. Combined, 83% of respondents want a single class under \$15. Notable: multiple write-ins specifically requested classes be free or included with membership — a recurring theme particularly among seniors.

**SERIES PRICE SWEET SPOT**

**\$60–\$79 is the modal preference at 35.4%** for a 6-week series, with 32.1% saying under \$60. That puts 67.5% wanting a 6-week series under \$80 — or roughly \$10–\$13/class. Pricing programs in this range maximizes enrollment potential.

**PRICING INCENTIVES THAT WOULD INCREASE ENROLLMENT**



### STRATEGY IMPLICATION

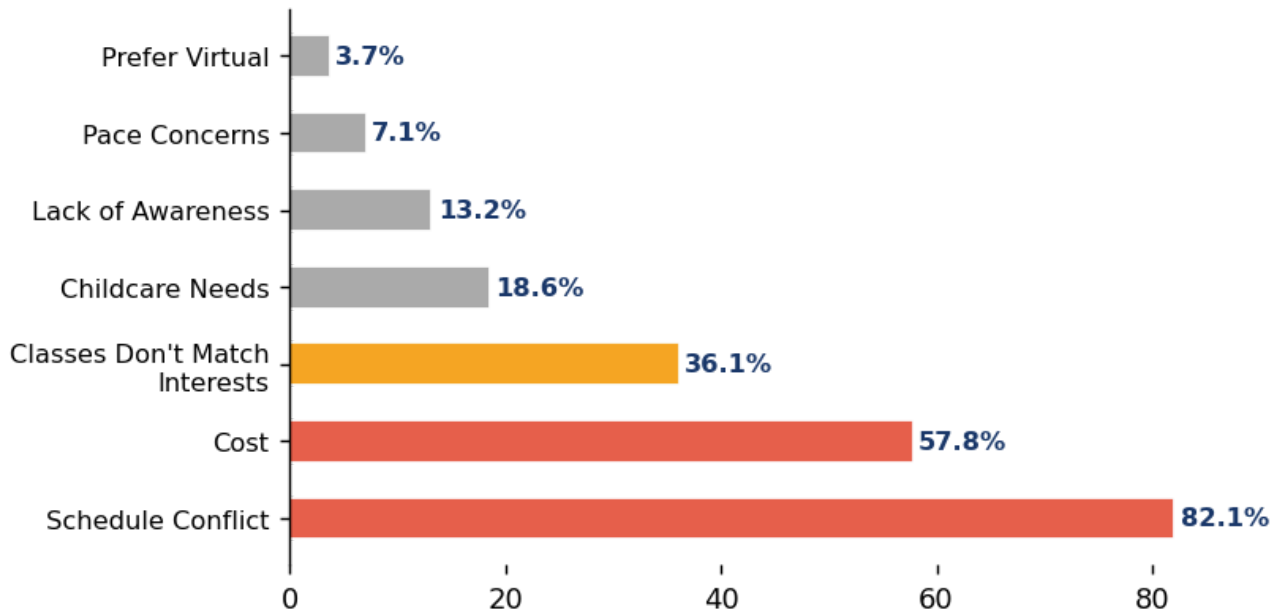
**81.1% want a free trial first.** This is the single highest-scoring incentive in the entire survey. The RAC's existing Guest Pass incentive is exactly the right tool — and should be prominently featured in all class launch marketing. A punch card program at a discount is the second most compelling offer, scoring higher than family bundles or member discounts.

## 6 BARRIERS TO ENROLLMENT

# What's Holding People Back

Understanding barriers is as important as understanding preferences. These are the specific friction points the RAC needs to address in program design, communication, and pricing.

### Barriers to Enrollment



**82.1% — the #1 barrier by a massive margin.** This is not a soft preference. Most respondents have a real structural scheduling conflict. Evening and weekend classes are not optional — they are the minimum requirement to serve this community.

**57.8% cite cost as a barrier** — more than half the respondents. This is not just a perception problem; it's a design problem. Free trials, punch cards, and member pricing need to be built into the program model from day one, not offered as afterthoughts.

 PROGRAM FIT

**36.1% say classes don't match their interests** — and this survey exists to fix exactly that. The data here should directly translate into program selections that address this gap. Monitoring this metric after Fall launch will show whether we succeeded.

 CHILDCARE GAP

**18.6% cite childcare needs** as a barrier — a significant enough segment to consider. Even informal solutions (a supervised kids' area during evening classes) could unlock enrollment from a meaningful cohort of parents.

**7** STRATEGIC RECOMMENDATIONS

## Fall 2026 Planning Priorities

Based on the data, the following programs, schedules, and structures represent the highest-confidence starting points for Fall 2026 planning. Prioritized by demand signal strength.

PROGRAM	CATEGORY	DEMAND SIGNAL	RECOMMENDED FORMAT	PRIORITY
Strength Training	Fitness	58.3% — #1 overall	Multi-week series + drop-in; Mon/Wed/Thu evenings 6–8 PM; 60 min	HIGH
Yoga / Pilates	Fitness / Mind-Body	46.4% — #2 fitness	Multi-week series; mornings + evenings; 60 min; beginner emphasis	HIGH
Water Exercise Classes	Aquatics	42.1% — #3 fitness	Drop-in friendly; weekday mornings + one evening slot; 60 min	HIGH

PROGRAM	CATEGORY	DEMAND SIGNAL	RECOMMENDED FORMAT	PRIORITY
Cardio / HIIT	Fitness	39.4%	Multi-week or drop-in; Thu evenings primary slot; 45–60 min	HIGH
Swim Lessons (adults + children)	Aquatics	35.4%	Session-based series; Sat/Sun mornings; varied levels	HIGH
Cooking / Nutrition	Enrichment	49.7% — #1 enrichment	One-time workshops + seasonal series; Sat mid-morning ideal	HIGH
Painting / Visual Arts	Arts	40.7% — #1 arts	Open studio drop-in + 6-week series; Sat morning or weekday evening	HIGH
Dance (various styles)	Arts / Fitness	38.1% arts + Dance Fitness 30.1%	Multi-week series by style; evening and Sat slots; beginner to intermediate	HIGH
Walking / Hiking Group	Social / Club	38.4% — #1 social	Free, recurring weekly; Sat morning; community-building entry point	HIGH
Home Garden Skills	Enrichment	38.1%	Seasonal workshops (fall planting); Sat mid-morning; one-time events	MEDIUM
Sewing / Quilting	Arts	33.4%	Multi-week series; weekday evening or Sat morning	MEDIUM
Music Lessons	Arts / Performing	32.1%	Private or small group; flexible scheduling; all ages	MEDIUM
Dance Fitness (Zumba / TapFit)	Fitness	30.1%	Drop-in friendly; one weekday evening + Sat slot	MEDIUM
Sports Skills Drop-in Clinics (Pickleball, etc.)	Social / Club	33.4% + multiple write-ins	Drop-in; weekends; capitalize on pickleball demand specifically	MEDIUM
Tai Chi	Fitness / Senior	Multiple write-ins; senior demographic alignment	Drop-in; weekday morning; free or low-cost for seniors	MEDIUM

## 3 Strategic Priorities for Fall Launch

**1. Lead with Evening Programming.** Schedule must include robust Mon–Thu 6–8 PM options across fitness, arts, and enrichment. This is non-negotiable given that schedule conflict is the #1 barrier at 82%. Daytime-only programming will chronically underperform with this community.

**2. Build a Drop-in-to-Series Funnel.** 81.5% want drop-in flexibility but 67.2% also want structured series. Start every new program as a drop-in, then convert attendees into series enrollment with a discount offer after their second or third visit. The free trial incentive (81.1%) is the door opener.

**3. Invest in Aquatics and Strength — the RAC's Anchors.** Strength training and water-based programming are the top two fitness categories and represent the RAC's biggest differentiators from any other local option. These are the programs that justify membership and build long-term loyalty. Under-invest here and the community will find alternatives.

### 8 COMMUNITY VOICE

## Notable Themes from Write-Ins

The open-ended responses often contain the most actionable intelligence. Several clear themes emerged across multiple respondents.

### SENIOR PROGRAMMING GAP

Multiple seniors wrote in with specific, detailed requests — tai chi, gentle yoga, adaptive dance, Feldenkrais, and afternoon drop-in options. One respondent provided a multi-paragraph comparison to SF Parks & Recreation's senior offerings. **Seniors are engaged, specific, and ready to show up — this audience rewards investment.**

### SPECIAL NEEDS & ADAPTIVE CLASSES

At least 3 separate respondents specifically requested classes for children and young adults with autism/special needs — covering swim, fitness, enrichment, and club activities. **This is an underserved and vocal segment that could anchor a differentiated, mission-driven program lane.**

### PICKLEBALL

Called out by name in multiple write-ins. Given the sport's explosive national growth and demographic alignment with the RAC's adult audience, pickleball lessons and open play hours represent a low-cost, high-visibility programming addition with built-in buzz.

### MEMBERS EXPECT MORE INCLUSION

Multiple write-ins from members explicitly stated that classes should be free or heavily discounted for annual membership holders. **This expectation gap — if unaddressed — is a churn risk.** A compelling member-pricing tier for classes may be as important as the class offering itself.

### EVENING HOURS ARE CRITICAL

"Not many adult options," "Most classes are during the day," and "We need more options for working adults after 5" appeared in multiple responses. This directly echoes the scheduling data. **The working adult audience (the largest demographic at 44.4%) is not being served by daytime-only programming.**

### LANGUAGE & CULTURAL DIVERSITY

7% of home languages are Cantonese, 5.6% Spanish, 4% Mandarin. Requests included Japanese, Spanish, and Chinese language classes. Culturally-specific offerings like ballet folklórico also appeared. **Multilingual and culturally resonant programming will expand reach into non-English-speaking households.**



**DATE:** May 21, 2026  
**TO:** Culture and Arts Commission  
**FROM:** Collette Murphy Stefanko, Community Services Special Assistant  
Travis M. Karlen, Community Services Director  
**SUBJECT:** Review Submissions and Select Artists for Community Art Gallery Program 2026-2027

**BACKGROUND:**

The Culture and Arts Commission produces a call for artists each year for the Community Art Gallery program. Through this process, the Commission selects three artists to exhibit their 2D artwork at the Library for approximately four months each, in succession. This rotating exhibition series not only provides emerging and established artists with meaningful public exposure, it also strengthens their professional portfolios and helps them connect with new audiences within the community.

For community members, the program brings a continual variety of creative perspectives into a highly accessible public space. The changing exhibitions encourage repeat visits to the Library, enrich the cultural environment, and offer residents opportunities to engage with local and regional artists. By presenting diverse artistic voices throughout the year, the Community Art Gallery program supports cultural vibrancy, fosters appreciation for the arts, and helps cultivate a more connected and creative community.

**DISCUSSION:**

A Call for Artists was developed and distributed in late February 2026 with a deadline date of April 17, 2026. The Commission received 16 submissions for consideration. Each artist submitted at least five, but not more than 15 digital images of the artwork they proposed to exhibit. These images have been transferred to a slideshow presentation which will be shown to the Commission at its May meeting (Attachment 1).

Using the provided scoresheet (Attachment 2), each commissioner is requested to assign scores to each artist's exhibition submission based on technical expertise, creativeness, and appropriateness of the images. To recognize their contributions to the local community, San Bruno artists will receive 20 additional points out of 100, and San Mateo County artists will receive 10 additional points. Each Commissioner will return their scoresheet to Staff at the conclusion of the meeting. Staff will tally the votes and notify each artist of the results.

Artists will be notified of the results by June 1, 2026. The three selected artists will begin exhibiting their works at the San Bruno Library in July 2026.

**FISCAL IMPACT:**

Each of the three artists selected by the commission will be awarded a \$250 stipend paid from the City Art Fund. Funding for artwork installation is included in the adopted FY 2025-26 budget and requested in the proposed FY2026-27 budget.

**RECOMMENDATION:**

Staff recommends that Commissioners record scores for each artist's proposed exhibition based on technical expertise, creativeness, and appropriateness of the artwork submitted for consideration.

**ATTACHMENTS:**

1. Presentation of Exhibition Proposals Presentation
2. Commissioner Scoresheet

ARTIST # \_\_\_\_\_

COMMISSIONER: \_\_\_\_\_

General Comments: \_\_\_\_\_

Artwork Consideration			Local Artist Consideration		SCORE
Technical Expertise (up to 30 points)	Creativeness (up to 30 points)	Appropriateness (up to 20 points)	San Bruno Artist (add 20)	San Mateo County Artist (add 10)	TOTAL (out of 100)

ARTIST # \_\_\_\_\_

COMMISSIONER: \_\_\_\_\_

General Comments: \_\_\_\_\_

Artwork Consideration			Local Artist Consideration		SCORE
Technical Expertise (up to 30 points)	Creativeness (up to 30 points)	Appropriateness (up to 20 points)	San Bruno Artist (add 20)	San Mateo County Artist (add 10)	TOTAL (out of 100)

ARTIST # \_\_\_\_\_

COMMISSIONER: \_\_\_\_\_

General Comments: \_\_\_\_\_

Artwork Consideration			Local Artist Consideration		SCORE
Technical Expertise (up to 30 points)	Creativeness (up to 30 points)	Appropriateness (up to 20 points)	San Bruno Artist (add 20)	San Mateo County Artist (add 10)	TOTAL (out of 100)

ARTIST # \_\_\_\_\_

COMMISSIONER: \_\_\_\_\_

General Comments: \_\_\_\_\_

Artwork Consideration			Local Artist Consideration		SCORE
Technical Expertise (up to 30 points)	Creativeness (up to 30 points)	Appropriateness (up to 20 points)	San Bruno Artist (add 20)	San Mateo County Artist (add 10)	TOTAL (out of 100)

Item 7b

ARTIST # \_\_\_\_\_

COMMISSIONER: \_\_\_\_\_

General Comments: \_\_\_\_\_

Artwork Consideration			Local Artist Consideration		SCORE
Technical Expertise (up to 30 points)	Creativeness (up to 30 points)	Appropriateness (up to 20 points)	San Bruno Artist (add 20)	San Mateo County Artist (add 10)	TOTAL (out of 100)

ARTIST # \_\_\_\_\_

COMMISSIONER: \_\_\_\_\_

General Comments: \_\_\_\_\_

Artwork Consideration			Local Artist Consideration		SCORE
Technical Expertise (up to 30 points)	Creativeness (up to 30 points)	Appropriateness (up to 20 points)	San Bruno Artist (add 20)	San Mateo County Artist (add 10)	TOTAL (out of 100)

ARTIST # \_\_\_\_\_

COMMISSIONER: \_\_\_\_\_

General Comments: \_\_\_\_\_

Artwork Consideration			Local Artist Consideration		SCORE
Technical Expertise (up to 30 points)	Creativeness (up to 30 points)	Appropriateness (up to 20 points)	San Bruno Artist (add 20)	San Mateo County Artist (add 10)	TOTAL (out of 100)

ARTIST # \_\_\_\_\_

COMMISSIONER: \_\_\_\_\_

General Comments: \_\_\_\_\_

Artwork Consideration			Local Artist Consideration		SCORE
Technical Expertise (up to 30 points)	Creativeness (up to 30 points)	Appropriateness (up to 20 points)	San Bruno Artist (add 20)	San Mateo County Artist (add 10)	TOTAL (out of 100)

Item 7b



**COMMUNITY  
ART GALLERY  
PROGRAM**

**CALL FOR ARTISTS**

**2026**

# ARTIST #1

I am a fine art photographer (and artist) drawn to storytelling through atmosphere, light, and emotional nuance. This series is influenced by classic cinema, particularly the visual language of film noir. I strive to create images that feel suspended in time, inviting viewers to wonder what has just occurred or what may happen next. I use shadow, contrast, and careful composition to shape mood and psychological depth, paying close attention to the sculptural quality of light. My prints are produced on museum-quality papers, reinforcing the cinematic quality of the work. Titles and accompanying narrative texts are an integral to each image, offering a point of entry into the story while leaving space for personal interpretation.

# ARTIST #1

8 IMAGES SUBMITTED

## Rising Still

21"x21", Photographic Print on Canvas



## Where the City Turns

21"x21", Photographic Print on Canvas



## **Finding Solace**

26"x26", Photographic Print on Canvas



## **SF City Scape**

26"x26", Photographic Print on Canvas



## **It is Written**

11"x17", Photographic Print on Watercolor Paper



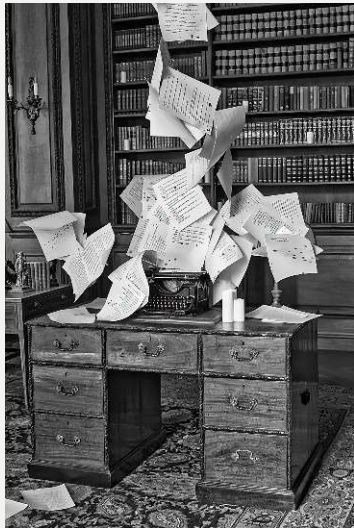
## **Leaving**

11"x17", Photographic Print on Watercolor Paper



## Well, It Was Written

11"x17", Photographic Print on Watercolor Paper



## Shadows of Longing

11"x17", Photographic Print on Watercolor Paper



# ARTIST #2

This collection of photos was taken in San Jose (Rose Garden neighborhood), San Bruno (Pacific Heights neighborhood), and San Juan Capistrano (Los Rios Park).

I photographed these plants because sometimes it's hard to tell what is real and what is not. All of the images show real plants except for one - can you spot it?

Through this work, I want to show how easily our eyes can be tricked and encourage people to look more closely at the details that make each image unique.

I enjoy making art because it is fun and lets me be creative, and photography is one of my favorite ways to capture things I find interesting.

# ARTIST #2

7 IMAGES SUBMITTED

## Flower 1

14"x19", Digital Photograph



## Leaf

14"x19", Digital Photograph



## **Flower 2**

14"x19", Digital Photograph



## **Flower 3**

14"x19", Digital Photograph



## **Flower 4**

14"x19", Digital Photograph



## **Succulent**

14"x19", Digital Photograph



# Flower Succulent

14"x19", Digital Photograph



# ARTIST #3

My passion is a fusion of visual art and poetry. A lot of my images have correspondent poems.

My artworks were accepted for exhibits in

[REDACTED]

I had a personal exhibit in

[REDACTED].

# ARTIST #3

15 IMAGES SUBMITTED

## **Alien**

20"x16", Photography



## **Bedazzling**

20"x16", Photography



**Blue Lines**

16"x20", Photography



**Crackled**

16"x20", Photography



## **Frozen**

16"x20", Photography



## **Frozen Symphony**

16"x20", Photography



## **Ice Fish**

20"x16", Photography



## **Illusion of Prosperity**

16"x20", Photography



## **In Flight Entertainment**

20"x16", Photography



## **In the Clouds**

20"x16", Photography



## **Into the Orbit**

16"x20", Photography



## **It's Complicated**

16"x20", Photography



## **Light Bulb**

16"x20", Photography



## **Perplexity**

20"x16", Photography



# Reflecting the Light

20"x16", Photography



# ARTIST #4

I chose the Sun as my muse for many years because I see it as the entertainer in the sky who has many characters, personalities and names as it rises in the morning and sets at night. It is the one star that has the most powerful heat that lights the entire world, people look for the Sun to come out.

The Sun names are given based on significant highly regarded meanings. When I am creating the Suns, I like to bring a lot of different art mediums to each one by using a variety of paints, recycled paper, clay, copper, vintage fabrics, glass, and beads to name a few. Doing this brings their characters and personalities together to their names. I was told they brighten lives and uplift communities with heartfelt delight. Each piece is on a canvas with the D-Ring hangers.

There are a lot of mediums for the Suns and one of my missions is to keep creating, producing, sharing and extend their light of Love.

# ARTIST #4

6 IMAGES SUBMITTED

## Sun of Strength With Determination

16"x20", Mixed Media



## Sun of First Light

14"x14", Mixed Media



**Sun of Warm Hearted**  
24"x24", Mixed Media



**Sun of Peace Within**  
16"x20", Mixed Media



## Sun of Dawning Day

16"x20", Mixed Media



## Sun of Gracious

16"x20", Mixed Media



# ARTIST #5

My work explores everyday moments through vibrant color and expressive brushwork. I paint animals, city scenes, and personal memories, focusing on the small interactions and environments that shape our sense of place and belonging.

Working primarily in acrylic, I build layers of bold color and visible strokes to capture movement, personality, and emotion rather than strict realism. Many of my paintings are inspired by life in the Bay Area, where community, diversity, and urban energy intersect with moments of quiet observation.

Through my work, I aim to celebrate curiosity, humor, and the beauty found in ordinary experiences.

# ARTIST #5

13 IMAGES SUBMITTED

## Lab in the Museum

16"x24", Acrylic on Canvas



## Grumpy Old Fish

16"x14", Acrylic on Canvas



## Stepping Through Pride

16"x20", Acrylic on Canvas



## Reflections. Venice.

18"x18", Acrylic on Wood



**Seemed Like a Good Plan at the Time...**

16"x24", Acrylic on Canvas



**Bound Hearts**

24"x36", Acrylic on Canvas



## **A Purrfect Evening**

18"x24", Acrylic on Canvas



## **Morning Visitors**

24"x24", Acrylic on Canvas



## Lord Peckasso

18"x18", Acrylic on Canvas



## Bokeh

24"x36", Acrylic on Canvas



## Purple Dreams

24"x36", Acrylic on Canvas



## I Heart You

24"x36", Acrylic on Canvas



## Love is Love

24"x36", Acrylic on Canvas



# ARTIST #6

My work explores everyday moments through vibrant color and expressive brushwork. I paint animals, city scenes, and personal memories, focusing on the small interactions and environments that shape our sense of place and belonging.

Working primarily in acrylic, I build layers of bold color and visible strokes to capture movement, personality, and emotion rather than strict realism. Many of my paintings are inspired by life in the Bay Area, where community, diversity, and urban energy intersect with moments of quiet observation.

Through my work, I aim to celebrate curiosity, humor, and the beauty found in ordinary experiences.

# ARTIST #6

14 IMAGES SUBMITTED

## Love Birds

Unknown Size, Acrylic on Canvas



## The Welcome Committee

24"x24", Acrylic on Canvas



**Seemed Like a Good Plan at the Time...**

16"x24", Acrylic on Canvas



**Pretty Please**

10"x20", Acrylic on Canvas



## **Self Portrait**

20"x20", Acrylic on Canvas



## **Monarch Dreams**

18"x24", Acrylic on Canvas



## Poms

20"x20", Acrylic on Canvas



## Coming Home

10"x20", Acrylic on Canvas



## Yoshi With a Glass of Milk

18"x24", Acrylic on Canvas



## Double Vision

18"x24", Acrylic on Canvas



## Summer

18"x24", Acrylic on Canvas



## Holiday Squirrel

16"x20", Acrylic on Canvas



## **Vortex**

16"x20", Acrylic on Canvas



## **Rainbow Heart**

24"x36", Acrylic on Canvas



# ARTIST #7

██████ is a ██████████ based artist and creative problem solver who's intricately detailed wall sculptures take audiences on engaging, sometimes twisted, journeys of thought. Through his layered wood artwork and cities made from reclaimed materials, he continually pushes the boundaries of his mediums while asking us to reflect on who we are, the world around us, and where the two intersect. He has cast metals, exhibited ceramics, concocted conceptual art puzzles, collaborated on interactive Burning Man art, and he thrives on sneaking creative surprises into every corner of life.

# ARTIST #7

8 IMAGES SUBMITTED

## Power of Music - D

22"x24", Layered Wood



## Power of Music - M

24"x24", Layered Wood



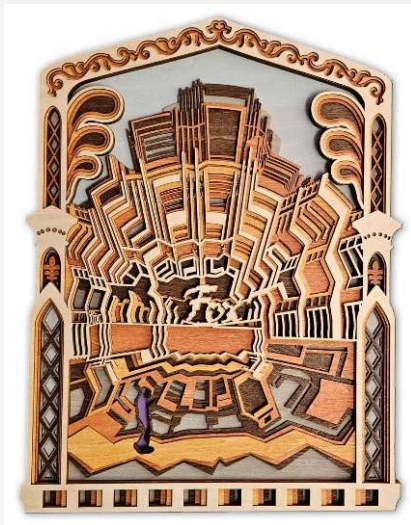
## Explore

16"x16", Layered Wood



## Look at Me

22"x11", Layered Wood



## Droning

17"x15", Layered Wood



## Identity 4

17"x24", Layered Wood



## The Five Principles

21"x12", Layered Wood



## Evolve

22"x22", Layered Wood



# ARTIST #8

No artist statement submitted.

# ARTIST #8

5 IMAGES SUBMITTED

## Lone Park Bench

12"x18", Acrylic Gouache



## Cloudy Day Park Structure

12"x18", Acrylic Gouache



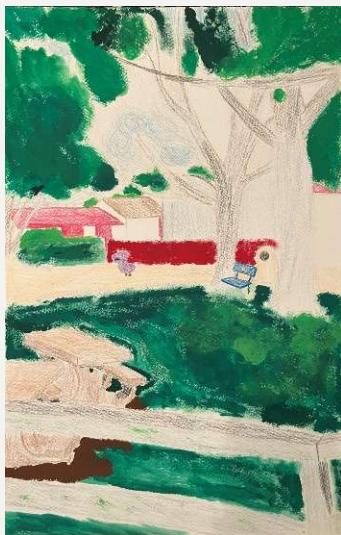
## Red Bridge Above Water

12"x18", Acrylic Gouache



## Shaded Rest

12"x18", Acrylic Gouache



# Bench Behind Baseball

12"x18", Acrylic Gouache



# ARTIST #9

█ is an illustrator and educator whose life and art are fueled by curiosity, culture, and love of storytelling. Born and raised in Qatar, she moved to the United States in 2003. After living in Fresno, she relocated to █ in 2024. Her work spans multiple styles and media, with a focus on acrylic painting. Beyond the studio, she paints murals and performs live art. Her art shows her adventures across the country, capturing fleeting moments that inspire her creativity. Each piece reflects a world of romance, fantasy, mystery, and adventure.

# ARTIST #9

6 IMAGES SUBMITTED

## Lily

36"x36", Acrylic on Wood Panel



## Dunes

48"x48", Acrylic on Canvas



## Sea

48"x48", Acrylic on Canvas



## Serenity

48"x48", Acrylic on Canvas



## Be My Backyard

30"x48", Acrylic on Canvas



## Fly Me

48"x36", Acrylic on Canvas



# ARTIST #10

I'm a [REDACTED] photographer and I love San Bruno Mountain. I've been coming to visit for years, going on hikes, helping weed and plant natives with San Bruno Mountain Watch and the Weed Warriors and taking lots of photographs along the way. I would love to exhibit work that showcases this local treasure, the rare and endangered butterflies, some of the rare plants including the manzanitas and others, and the beauty in different seasons. My plan would be to include captions with the titles of each photo to tell viewers a bit more about the subject of each photo and to try to inspire viewers to visit and protect this very special local park. I'm a professional photographer and I've been working in the bay area for over 20 years. My work has been exhibited nationally and internationally.

# ARTIST #10

15 IMAGES SUBMITTED

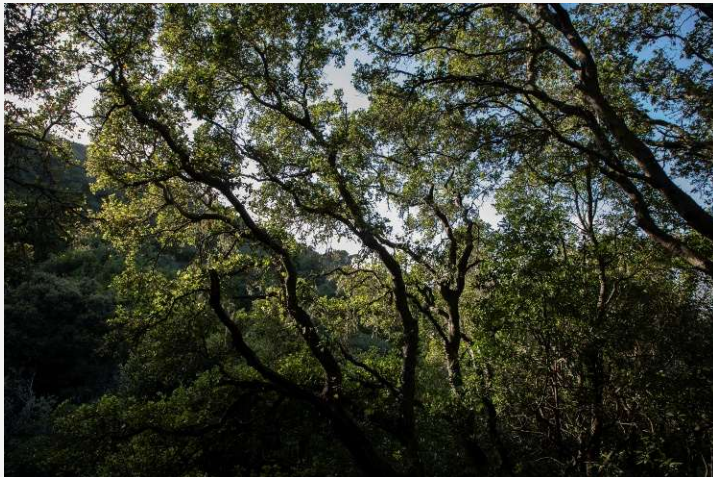
## Alligator Lizard

20"x20", Photograph



## Buckeye Canyon

20"x24", Photograph



# Calliope Silverspot Butterfly

20"x24", Photograph



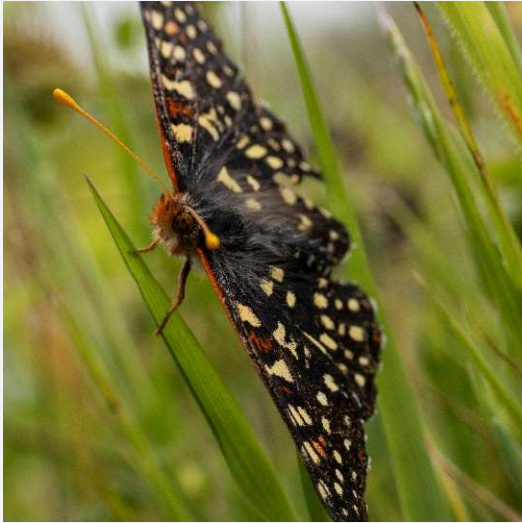
# Calliope Silverspot Butterfly Close-Up

20"x24", Photograph



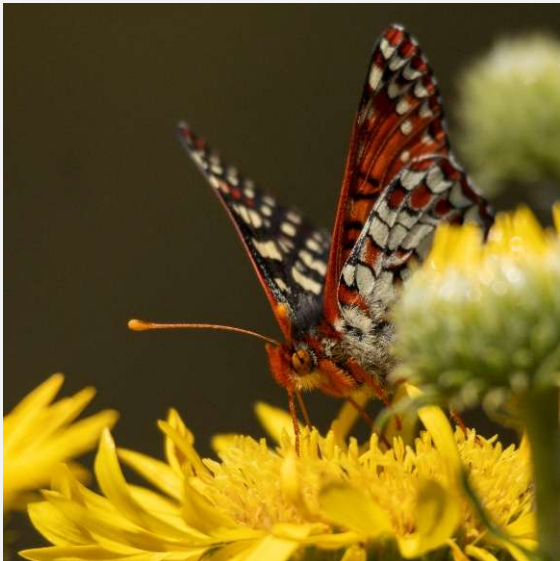
## Checkerspot Butterfly 1

20"x20", Photograph



## Checkerspot Butterfly 2

20"x20", Photograph



## Clouds Above Buckeye Canyon

20"x24", Photograph



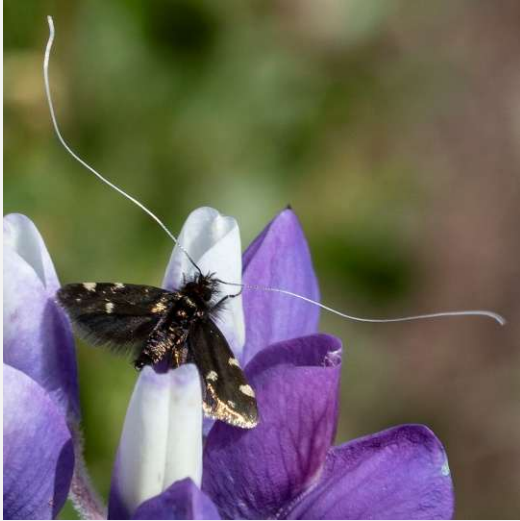
## Foggy Trail on San Bruno Mountain

20"x24", Photograph



## Longhorn Fairy Moth

20"x20", Photograph



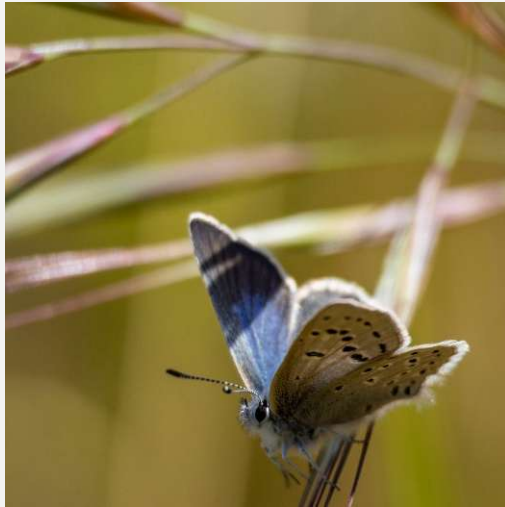
## Manzanita

20"x20", Photograph



## **Mission Blue Butterfly**

20"x20", Photograph



## **San Bruno Elfin Butterfly**

20"x20", Photograph



## **San Francisco Wallflower**

20"x20", Photograph



## **Fence Lizards**

20"x20", Photograph



# Winter Fog on San Bruno Mountain

20"x20", Photograph



# ARTIST #11

I've always been inspired by the playful shapes, bright colors, and little surprises hiding in nature. Through painting, I try to capture that sense of wonder - the feeling of lying in the grass, watching sunlight filter through leaves, and flowers fluttering in the breeze.

My process is heavily inspired by nature, both large and small - anywhere from botanical gardens to afternoon neighborhood walks. I mainly use gouache, watercolor, and botanical pigments.

My work has a playful and whimsical style that reflects how I experience nature. I have previously exhibited my work in Bay Area libraries ( [REDACTED] ), as well as local cafés.

# ARTIST #11

15 IMAGES SUBMITTED

## Claytonia

17"x17", Gouache



## Meadow Wildflowers

17"x17", Gouache



## Strawberry Garden

17"x17", Gouache



## California Wildflower

17"x17", Gouache



## Golden Hour

17"x17", Gouache and Watercolors



## SF Conservatory

17"x17", Gouache



## Ranunculus Bouquet

17"x17", Gouache and Acquerelle Crayon



## Orange Lily Bouquet

17"x17", Gouache and Acquerelle Crayon



## Peony Garden

17"x17", Gouache and Acquerelle Crayon



## Bromelaid

17"x17", Gouache and Acquerelle Crayon



## After the Rain

17"x17", Gouache



## Cabbage

17"x17", Gouache



## Dragonflies

17"x17", Gouache



## San Diego

17"x17", Gouache



# Yellow Wildflowers

17"x17", Gouache



# ARTIST #12

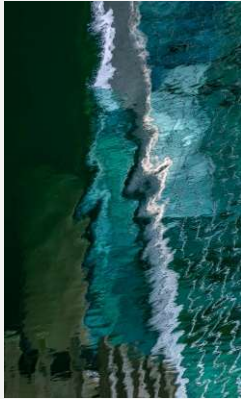
I am a lens-based photographer residing in [REDACTED]. My photographic vision is to create images that speak to me emotionally and aesthetically and offer the viewer an opportunity to see the ordinary from a different perspective, abstraction is the focus of this work. These images have a common theme: water. Using various creative approaches (mostly in-camera) I expand the subject to offer unique interpretations and responses. My work has been juried into exhibitions regionally, nationally and internationally. I was recently part of a three-person exhibition at [REDACTED] Gallery and have or recently had images at the [REDACTED] Museum of Photography in [REDACTED], the [REDACTED] Art Gallery, the [REDACTED], [REDACTED] and [REDACTED] gallery in [REDACTED].

# ARTIST #12

10 IMAGES SUBMITTED

## Water Abstract 1

18"x12", Photography



## Water Abstract 2

14"x24", Photography



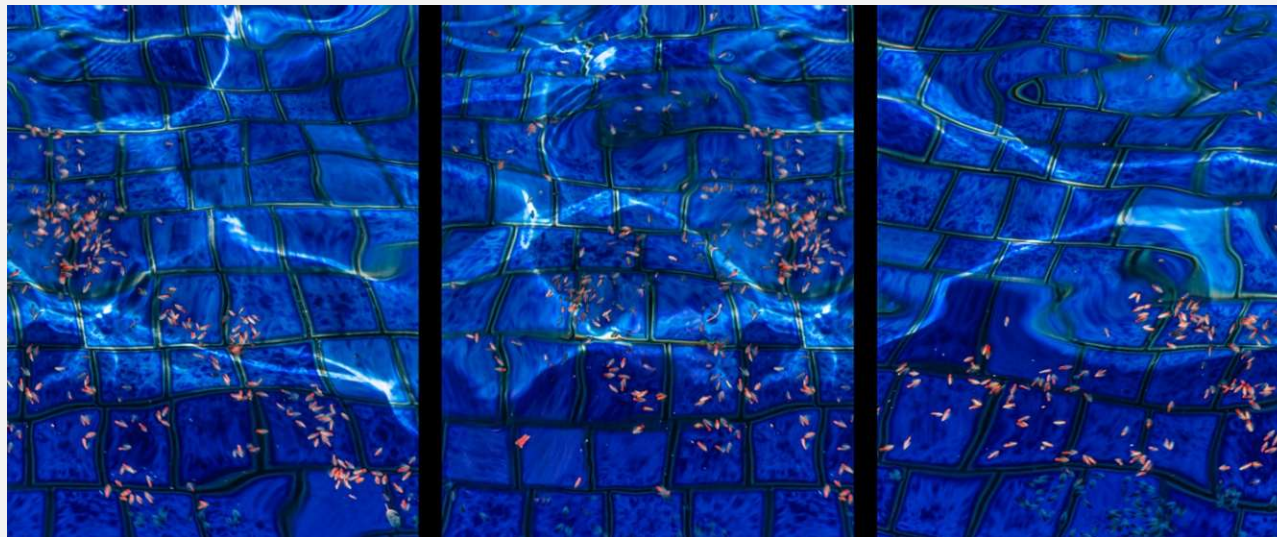
### Water Abstract 3

18"x12", Photography



### Water Abstract 4

20"x30", Photography



## **Water Abstract 5**

16"x16", Photography



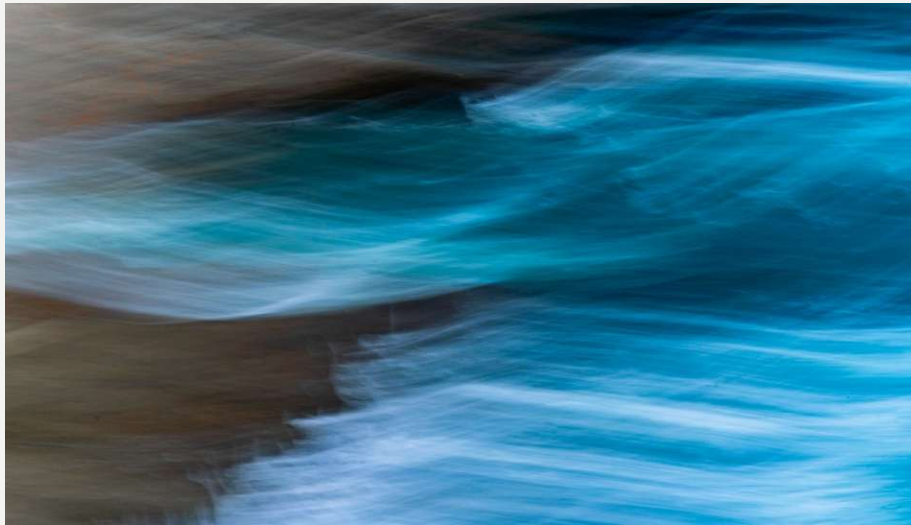
## **Water Abstract 6**

18"x14", Photography



## Water Abstract 7

12"x18", Photography



## Water Abstract 8

18"x14", Photography



## Water Abstract 9

18"x20", Photography



## Water Abstract 10

20"x15", Photography



# ARTIST #13

My work explores the quiet space where nature, emotion, and intuition intersect. As an abstract landscape artist, I am drawn to how the outer world mirrors our inner lives. I work primarily in oils and gouache, using layered textures, soft lines, and expressive color to create visual meditations that evoke stillness, transformation, and belonging. Inspired by hiking journeys, everyday walks, and the emotional resonance of natural places, I paint intuitively, allowing each piece to unfold as a dialogue between what I observe and what I feel. With a background in architecture, my compositions are shaped by a sensitivity to form, space, and balance. Through my materials, I aim to express internal states that often feel beyond words. Each painting is a way to slow down, tune inward, and reconnect, and I hope viewers find moments of reflection, presence, and beauty within the work.

# ARTIST #13

9 IMAGES SUBMITTED

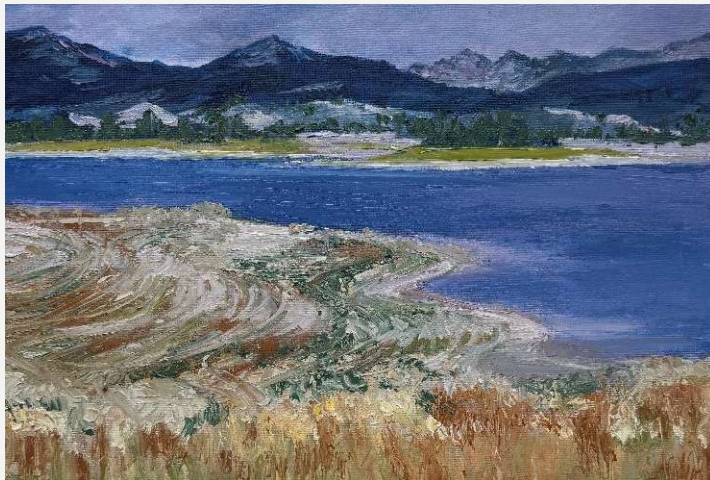
## Beyond the Flowers

12"x16", Oil on Canvas



## Blue Memory, Colorado

12"x16", Oil on Canvas



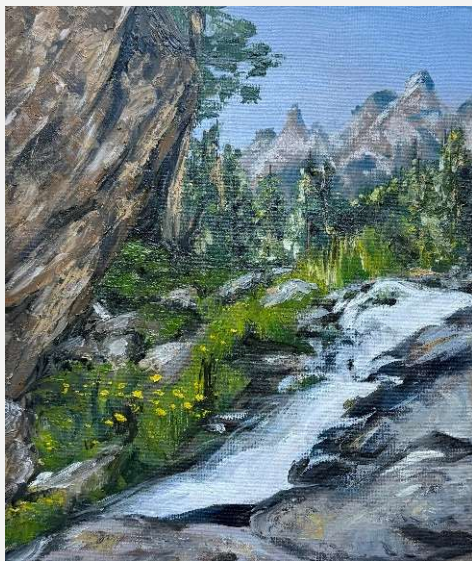
## **Beneath the Browns**

12"x16", Oil on Canvas

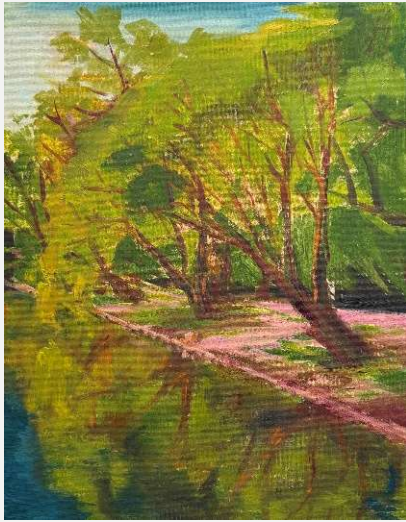


## **Where Water Finds Its Dream**

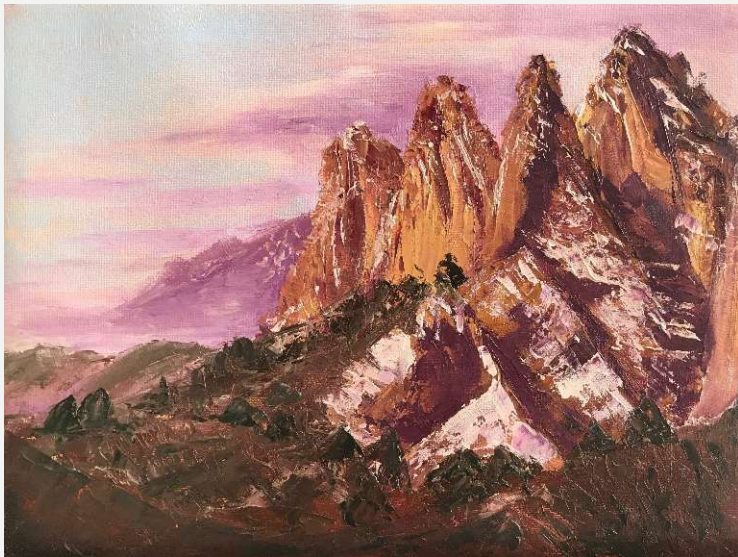
12"x16", Oil on Canvas



**The Tree Leans In**  
12"x16", Oil on Canvas



**Garden of the Gods**  
12"x16", Oil on Canvas



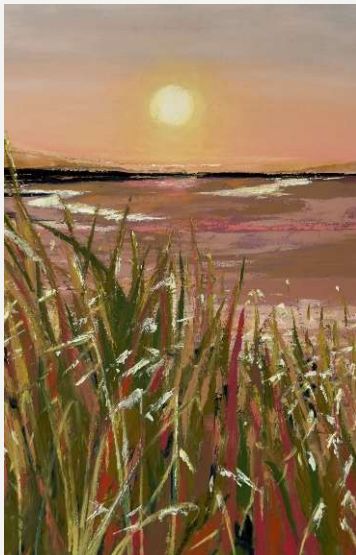
## **First Light**

24"x36", Oil on Canvas



## **Held by the Last Light**

24"x36", Oil on Canvas



# Whispers of the Peak

24"x48", Oil on Canvas



# ARTIST #14

I'm submitting my application to exhibit my paintings for the San Bruno Library. My paintings reflect my interest in Japan and specifically the Showa period. During my visits to Japan I enjoy taking photos of locations I feel still embody the flavor of that time. I paint from photographs and delete out anything modern, and add items I think would suit that period. My paintings were part of a display at [REDACTED] [REDACTED] since 2001. Although they are not framed, they have hanging wire attached to the wood frame of the canvas (not sure if that qualifies). I appreciate your consideration.

# ARTIST #14

9 IMAGES SUBMITTED

## Night Alley

20"x16", Acrylic on Canvas



## China Alley

20"x16", Acrylic on Canvas



## **Machida Crossing**

20"x16", Acrylic on Canvas



## **Gifu Night**

20"x16", Acrylic on Canvas



## Night Machida

20"x16", Acrylic on Canvas



## Shinjuku Street

12"x16", Acrylic on Canvas



## Showa Street

20"x16", Acrylic on Canvas



## ABC Mart

20"x16", Acrylic on Canvas



# Tsukiji

20"x16", Acrylic on Canvas



# ARTIST #15

I'm an artist based in the Bay Area, but originally from Mexico. My work serves as an invitation for viewers to reconnect with their capacity to dream. By capturing the ethereal beauty of night skies through the fluid transparency and playful textures of watercolor, I aim to evoke a sense of wonder and infinite possibilities. Deeply committed to nature, I mostly utilize eco-friendly materials to ensure my creative practice remains in harmony with the environment. My art is a celebration of the cosmos, crafted with a conscious footprint to inspire both imagination and preservation.

# ARTIST #15

10 IMAGES SUBMITTED

## Once Upon a Night

18"x24", Watercolors/Collage



## The Right Path

12"x18", Watercolors/Ink/Flakes



## A Solo

22"x30", Watercolors



## Sight

22"x34", Watercolors/Graphite



## Pure Light

18"x24", Watercolors



## From Pieces

18"x24", Watercolors



## Pearl

18"x24", Watercolors



## From the Beginning

22"x30", Pastels/Graphite



## Starling Starlight

22"x29.5", Watercolors



## Blue Bird Dream

30"x22", Watercolors



# ARTIST #16

My mosaics are unique works of art that blend impressionism, storytelling, still life, and architecture. I work with a variety of materials-glass, ceramics, slate, stones, and fused glass-to create wall hangings, sculptures, animals, mirrors, water fountains, birdbaths, and even jewelry. By combining materials of different thicknesses, I achieve a distinctive three-dimensional look that gives each piece depth and texture. The materials themselves often guide my creative process. When I discover new pieces of glass or ceramics, they immediately spark ideas-sometimes landscapes or flowers, other times abstract forms. Traveling also fuels my imagination, especially for nature-inspired and landscape mosaics. Each mosaic requires a different technique, from direct to indirect methods, or a mix of both. I enjoy the challenge of cutting and shaping thick ceramics and stained glass into precise, flowing patterns. Achieving the right *andamento* - the rhythm and movement within a mosaic - is essential for conveying emotion and energy. Some mosaics remain ungrouted to let the colors and materials shine naturally.

# ARTIST #16

9 IMAGES SUBMITTED

## Capri

24"x36", Metal Print



## Painted Ladies

16"x48", Canvas Print



## Capitola 1

16"x48", Canvas Print



## Capitola 2

13.5"x25.5", Canvas Print



## Santorini 2

14"x26", Canvas Print



## Thirst

14"x26", Canvas Print



## Three Sisters

14"x14", Canvas Print



## Swirling Thoughts

13"x19", Metal Print



## Rays of Hope

13"x19", Metal Print





**DATE:** May 21, 2026

**TO:** Culture and Arts Commission

**FROM:** Collette Murphy Stefanko, Community Services Special Assistant  
Travis M. Karlen, Community Services Director

**SUBJECT:** Consider Combining Art on Loan and Community Art Gallery Programs and Renaming the Combined Program

**BACKGROUND:**

The Culture and Arts Commission produces a call for artists each year for the Community Art Gallery program at the San Bruno Library. The Commission then selects three artists to exhibit their 2D artwork at the Library for approximately four months each, in succession.

At its regular meeting on November 21, 2024, the Commission considered a proposal to establish an Art on Loan Program for the City's new Recreation and Aquatic Center (RAC). The intent of the program is to encourage artistic expression, support local artists, and enhance public spaces by displaying rotating 2D artworks in City facilities.

Staff and the ad-hoc committee determined that selecting four artists would provide sufficient artwork while providing for variety and rotation. Two artists were proposed to exhibit their works from late February 2026 through late August 2026. The remaining two artists were proposed to exhibit from late August 2026 through late February 2027. Each exhibition period is approximately six months. The RAC Art on Loan Program is intended to be ongoing, with a new Call to Artists and a new cohort of exhibitors selected annually.

Due to challenges with procurement of the RAC artwork hanging system, the original schedule for artwork installation was delayed. The new schedule is anticipated to begin in July 2026.

**DISCUSSION:**

The Community Art Gallery Program at the Library and the Art on Loan Program at the RAC are fundamentally the same. Both provide a stipend to artists who loan their work for short-term public display in City-owned spaces, and both follow the same selection process. The only differences are the exhibition durations and stipend amounts: the Community Art Gallery Program offers a four-month loan period with a \$250 stipend, while the Art on Loan Program offers a six-month loan with a \$500 stipend. Each artist call, jurying, and selection process is currently conducted separately. This approach is inefficient and prevents the jury panel from viewing all exhibition proposals together as part of an annual curatorial vision. Additionally, the two program names, differing stipends, and varying exhibition periods create confusion.

**FISCAL IMPACT:**

Artist stipends and artwork installation costs are paid from the City Art Fund. Funding is included in the adopted FY 2025–26 budget and has been requested in the proposed FY 2026–27 budget.

**RECOMMENDATION:**

Staff recommends that the Commission combines the two programs and suggests:

- Program name
- Exhibition (loan) period
- Artist stipend amount

**ATTACHMENTS:**

none



**DATE:** May 21, 2026  
**TO:** Culture and Arts Commission  
**FROM:** Collette Murphy Stefanko, Community Services Special Assistant  
Travis M. Karlen, Community Services Director  
**SUBJECT:** Selection of Movies-in-the-Park for Public Voting

**BACKGROUND:**

Each year the Culture and Arts Commission hosts Movies-in-the-Park on Fridays during the month of September. At its April 24, 2025, meeting, the Commission adopted a change in the process of selection of films for Movies-in-the-Park, discontinuing genre-based voting for categories and instead allowing the public to select their four favorite films from a list of 15 options. Before this system was introduced, the Commission selected five movies in three different categories in which the public were allowed to vote.

Since there are four Fridays in September 2026, the four films receiving the highest number of votes, regardless of genre, would be selected for screening.

**DISCUSSION:**

Staff have developed a single list of 30 movies from different genres. The Commission will select 15 movies from the list for the public to vote their preferences. Public voting will begin on June 9, 2026, and end on July 13, 2026.

**FISCAL IMPACT:**

The fiscal impact associated with this item includes the costs associated with movie licensing fees, staff time, and special events review. The funding has been requested in the proposed FY2026-27 budget.

**RECOMMENDATION:**

The Commission will select 15 movies from the provided list for the public to vote on.

**ATTACHMENTS:**

1. Movies for the Commission to select from for public voting along with a list of all movies shown for the previous five years at Movies-in-the-Park as a reference.

**Attachment 1 – Movies for Potential Movies-in-the-Park Public Voting**

**Movie List**

<b>Movie Title</b>	<b>Rating</b>	<b>Rotten Tomatoes</b>	<b>Worldwide Box Office</b>	<b>Release Year</b>
A Minecraft Movie	PG	48%	\$961,187,780	2025
Coco	PG	97%	\$814,641,172	2017
E.T.	PG	99%	\$797,307,407	1982
Elio	PG	83%	\$154,291,182	2025
Freakier Friday	PG	74%	\$153,000,000	2025
Gabby's Dollhouse	G	79%	\$80,800,000	2025
Goat	PG	85%	\$186,000,000	2026
Hamilton	PG-13	98%	\$10,000,000	2020
Hoppers	PG	94%	\$333,000,000	2026
How to Train Your Dragon (2025)	PG	77%	\$636,400,000	2025
Jurassic World: Rebirth	PG-13	50%	\$869,000,000	2025
Karate Kid: Legends	PG-13	58%	\$114,519,291	2025
Lilo & Stitch (2025)	PG	72%	\$1,038,000,000	2025
Minions: The Rise of Gru	PG	89%	\$937,706,494	2022
Ratatouille	G	96%	\$623,700,000	2007
Scoob!	PG	48%	\$28,000,000	2020
Sketch	PG	95%	\$10,250,000	2024
Smurfs (2025)	PG	20%	\$124,100,000	2025
Superman (2025)	PG-13	83%	\$614,000,000	2025
The Bad Guys 2	PG	86%	\$239,631,546	2025
The Lego Movie	PG	96%	\$470,700,000	2014
The Muppet Movie	G	89%	\$66,462,692	1979
The Senior	PG	85%	\$5,296,246	2025
The Super Mario Galaxy Movie	PG	40%	\$372,500,000	2026
The Wizard of Oz	G	98%	\$29,700,000	1939
The Spongebob Movie: Search for Squarepants	PG	79%	\$71,000,000	2025
Thunderbolts	PG-13	88%	\$382,436,917	2025
Wicked: For Good	PG	66%	\$537,838,521	2025
Willy Wonka and the Chocolate Factory	G	90%	\$4,000,000	1971
Zootopia	PG	98%	\$1,018,474,875	2016

**Films Screened Over the Past Five Years for Movies in the Park**

**Movies Screened in 2021**

Raya and the Last Dragon  
Wall-E  
Soul  
Frozen II

**Movies Screened in 2022**

Encanto  
Jungle Cruise  
Lion King (2019 live-action version)  
Spider-Man: No Way Home  
West Side Story (2021 version)

**Movies Screened in 2023**

Top Gun: Maverick  
Avatar: The Way of Water  
Mulan (2020 Live Action Version)  
Sing 2  
The Super Mario Brothers Movie

**Movies Screened in 2024**

Kung Fu Panda 4  
Wonka  
Trolls Band Together  
Barbie

**Movies Screened in 2025**

Inside Out 2  
Moana 2  
Despicable Me 4  
Wicked Sing-Along